

CORE CATALOGUE



V1.7/24



Tel: 044 343 1021

Rise per size • T's & C's apply

sales@africantusk.co.za

www.africantusk.co.za

Garden Route office: Riverview Complex, Barrington Road, Sedgefield, 6573

Factory: Unit G, Berkley Square, Melck Street, Ndabeni, Cape Town

Admin and Training: Blyvooruitzicht 116, LR Farm, Portion 4, Wester Deep Levels, Carletonville

LADIES BUSH SHIRT - STONE LIGHTWEIGHT COTTON TWILL



AS152-145

LADIES BUSH SHIRT WITH
FRONT YOKE AND
VELCRO FLAP POCKETS

MENS BUSH SHIRT - STONE LIGHTWEIGHT COTTON TWILL



AS047-145 / AS044-145

MENS BUSH SHIRT WITH
FRONT YOKE AND
VELCRO FLAP POCKETS

OUR FULL STOCK RANGE 'AS' CODED IS AVAILABLE ON A 3/5 WEEK DISPATCH WITH EMBROIDERY*

GARMENTS AVAILABLE IN OLIVE AND STONE & CHARCOAL • Shading may occur within stock garment orders due to varying fabric batches

LADIES BUSH SHIRT - STONE, OLIVE & CHARCOAL



AS150F
SHORT SLEEVES

LADIES BUSH SHIRT SHAPED
WITH FLAP POCKETS



AS150G
LONG SLEEVES WITH ROLLUP STEEVE TAB

OUR TECHNICAL FABRIC HAS THE
FOLLOWING GENUINE PROPERTIES:

FABRIC ENGINEERED
IN SOUTH AFRICA

-  anti wicking
quick dry
-  UPF
UV protection
-  shape retention
easy care
-  cool for
hot climates
-  colourfast
- durable, ripstop
material
- 100% nylon/woven
- www.africantusk.co.za

MENS BUSH SHIRT - STONE, OLIVE & CHARCOAL



AS047
SHORT SLEEVES

MENS BUSH SHIRT
WITH FLAP POCKETS
Size: S - 3XL



AS044
LONG SLEEVES WITH ROLLUP STEEVE TAB



OUR FULL STOCK RANGE 'AS' CODED IS AVAILABLE ON A 3/5 WEEK DISPATCH WITH EMBROIDERY*

GARMENTS AVAILABLE IN OLIVE AND STONE & CHARCOAL • Shading may occur within stock garment orders due to varying fabric batches



AS857

‘CLASSIC ORIGINALS’
MENS FLAT FRONT CHINOS

- Premier brand at wholesale pricing
- Washed twill
- Back jet pocket
- YKK Zipper
- Size: Men 28 - 44

CARGO POCKETS

MID-GREY

STONE

KHAKI

OAK

OLIVE (MADE-TO-FADE)

OLIVE

OLIVE



NEW



LAST BUY

ON SPECIAL



LAST BUY

ON SPECIAL



NEW



NEW

OUR FULL STOCK RANGE ‘AS’ CODED IS AVAILABLE ON A 3/5 WEEK DISPATCH WITH EMBROIDERY*

Shading may occur within stock garment orders due to varying fabric batches



QUALITY MENS CHINOS

AS857COL-240

MENS CARGO PANTS
FLAT FRONT - OLIVE

- 240g polycotton twill
- classic fit with added length
- side cargo flap pockets
- size 34 leg length:
- outer leg 112cm
- inner leg 84cm
- front slant pockets and a back right jet pocket
- metal ykk zip
- double stitched outer seams
- pre-shrunk and washed

Size: Men 28 - 44

AS856COL-240

MENS CARGO SHORTS
FLAT FRONT - OLIVE

- 240g polycotton twill
- side cargo flap pockets
- inner leg 26cm
- front slant pockets and a back right jet pocket
- metal ykk zip
- double stitched outer seams
- pre-shrunk and washed

Size: Men 28 - 44

AS857COL-240
MENS CARGO PANTS
FLAT FRONT - OLIVE



AS856COL-240
MENS CARGO SHORTS
FLAT FRONT - OLIVE



OUR FULL STOCK RANGE 'AS' CODED IS AVAILABLE ON A 3/5 WEEK DISPATCH WITH EMBROIDERY*

Shading may occur within stock garment orders due to varying fabric batches



NEW

AS747BST-210
LADIES STONE
AS747BKH-240
LADIES KHAKI
MID RISE FLAT FRONT
TROUSERS
Fabric: Polycotton Twill
Size: Ladies 28 - 48



Supplied
in a bag

ASTMPONO - ADULTS PONCHO -
DURABLE RUBBERISED AND
WATERPROOF, IN A BAG
OLIVE, 89L X 140W
Fabric: Nylon - Size: OSFA



NEW

UNISEX POLAR FLEECE
TOP WITH POCKETS
AS283CG - PLAIN CHARCOAL
Fabric: Normal Polar Fleece
Size: XS - 3XL



ASBE11
UNISEX ELASTICATED
PANTS WITH 3 POCKETS
& DRAWCORD
• BLACK
Size: S - 3XL

AS780SB-210 - UNISEX TUNIC
STONE / BLACK NECKLINE SS
SERVICE STAFF
Fabric: 210G Polycotton Twill
Size: XS - 3XL



UNISEX POLAR FLEECE
TOP WITH POCKETS
AS283OS - OLIVE / STONE
Fabric: Normal Polar Fleece
Size: XS - 3XL

SERVICE STAFF
UNISEX POLAR FLEECE
TOP - NO POCKETS
AS283AB - BLACK
Fabric: Normal Polar Fleece
Size: XS - 3XL



OUR FULL STOCK RANGE 'AS' CODED IS AVAILABLE ON A 3/5 WEEK DISPATCH WITH EMBROIDERY*

Shading may occur within stock garment orders due to varying fabric batches

LADIES PF TOP, RAGLAN
SLV, PKTS, INNER COLLAR
AS1008CG - CHARCOAL
Fabric: Normal Polar Fleece
Size: S - 2XL



AS1058G - MENS



NEW

**AS1058 / AS1059
SOFTSHELL JACKETS**
- GREY

- Full Front Zip
 - Shaped Style
 - Hemmed Sleeve Cuffs
 - Front Zip Pockets
 - Hip Length
- Size: XS - 5XL

AS1059G - LADIES



NEW

**SHERPA FLEECE UNISEX
SLEEVELESS TOP**
AS283CSH - CHOC / STONE

Size: S - 2XL



LAST BUY

ON SPECIAL

**ASTMPARKA-OL
CORE RANGE PARKA**
NYLON WITH HOOD 2 POCKETS
OLIVE
Fabric: Oxford Nylon WP
Size: S - 3XL



NEW



AS3950L - OLIVE
PARKA JACKET WITH
POLAR FLEECE LINING
Zip off Hood
Fabric: 210GM Polycotton Twil
Size: XS-3XL

NEW



ASBECONTIKH - KHAKI
CONTI SUIT
Size: S - 2XL
Fabric: 210GM
Polycotton Twill

OUR FULL STOCK RANGE 'AS' CODED IS AVAILABLE ON A 3/5 WEEK DISPATCH WITH EMBROIDERY*

Shading may occur within stock garment orders due to varying fabric batches



STOCK ESSENTIAL - JACKET & PANTS

manufactured using a DURABLE polycotton



ASBE1-PC-W
DOUBLE BREASTED LONG
SLEEVE JACKET WITH
FOLD-UP CUFFS AND WHITE
REMOVABLE POPPERS
SIZING: S - 3XL
200GM POLYCOTTON TWILL



ASBE11-PC-B
CHEFS ELASTICAED
PANTS / BAGGIES
WITH 3 POCKETS
AND INNER
DRAWCORD
SIZING: S - 3XL
200GM POLYCOTTON TWILL



AST09 - BIB APRON WITH
NECK ADJUSTER AND
ROUNDED POCKET
72W X 86Lcm
• BLACK

AST08 - HALF APRON WITH
RECTANGULAR POCKET
98W X 77Lcm
• BLACK



AST06 - CHEFS BEANIE WITH TONAL
TOPPIPING AND HIDDEN
VELCRO CLOSER
7,5H X 18cm
• BLACK



ES2B - EXECUTIVE CHEFS JACKET
WITH PIPING, FRENCH
CUFFS & UNDERARM EYELETS
white/black piping - black/white piping
210gm p/c twill

OUR FULL STOCK RANGE 'AS' CODED IS AVAILABLE ON A 3/5 WEEK DISPATCH WITH EMBROIDERY*

Shading may occur within stock garment orders due to varying fabric batches



AT780 - UNISEX TUNIC SS



AT966B - MENS SS
V NECKLINE TUNIC



AT1072SS - MENS OPEN MANDARIN
COLLAR SHIRT SS



AT155 - UNISEX V-NECK
TUNIC SS



AT780E - UNISEX TUNIC
SS WITH PIPING & SLEEVE TRIM



AT780C - UNISEX TUNIC SS
WITH SHWESHWE NECK &
SLEEVE TRIM



AS857- STOCK
'CLASSIC ORIGINALS' MENS FLAT
FRONT CHINOS - STONE, KHAKI,
OAK & OLIVE



AXTO11 - BLACK - UNISEX
ELASTICATED PANTS WITH
PKTS & DRAWCORD



AXCM-TG1-460 - MENS
SERVICE STAFF POLY
TROUSERS



AT1004LS - MENS MANDARIN
OPEN NECK COLLAR, COVERED
BUTTONSTAND SHIRT, LONG SLEEVES



AT159B - MENS MANDARIN
COLLAR BUTTON SHIRT SS
OPT PKTS AND TRIM



AT1004SS - MENS MANDARIN OPEN
COLLAR SHIRT SS WITH COVERED
BUTTONSTAND



AS283AB - STOCK -
UNISEX PF TOP, NO POCKETS
BLACK

Manufactured to your colour and trim detail - wide choice of fabric types and weights. 6/8 week delivery. See Stock for immediate delivery

AT1047 - LADIES
3/4 SLEEVE SHIRT, 1/4 BUTTONSTAND



AT1063SS - LADIES OPEN
MANDARIN COLLAR SHIRT SS
COVERED BUTTON STAND

AT159 - LADIES OPEN NECK
SHIRT SS OPT PKTS AND TRIM



AT780C - UNISEX TUNIC SS
WITH SHWESHE NECK &
SLEEVE TRIM

AT1034 - LADIES MANDARIN
SS SHAPED



AT966 - LADIES SS V NECKLINE
SERVICE TUNIC



AXTODOEK - CORE
HOUSEKEEPING DOEK

AXTOSMD - LADIES
SMOCK DELUXE, SHAPED
2 BOTTOM POCKETS
106CM LENGTH



AXTOSMS - PLAIN LADIES
SMOCK STANDARD WITH
2 BOTTOM PKTS - 106CM
FROM NECK TO SEAM



AT140 - LADIES
SMOCK WITH PLAIN
CONTRAST



AT987 - LADIES
ELASTICATED
PANTS



AT070 - LADIES PLAIN
WRAP SKIRT, 1
PANEL



AXTO40 - LADIES HALF
ELASTICATED SKIRT WITH
BUTTON & ZIP



AT064B - LADIES HALF
ELASTICATED SKIRT WITH
BUTTON, ZIP, OPT STRIPES



AT833B - SPA TABARD
FULL FRONT DOUBLE PKT
SIDE BUTTON CLOSERS
71CM LENGTH *Size S - 2XL*



AXTOTAB - STANDARD
TABARD CONTRAST
BINDING
76CM LENGTH *Size S - 3XL*



**AT370LSV - MENS VENTED
HOSTING SHIRT LS**



**AT370LBV - MENS VENTED
BUSH SHIRT LS**



**AS044-TEC - STOCK - RANGERS BUSH
SHIRT WITH ROLL UP TABS LS, CHARCOAL
OLIVE, STONE OR CHOC**



**AS047-TEC - STOCK
RANGERS BUSH SHIRT SS, CHARCOAL
OLIVE, STONE**



**AXKVLO-PLA-LS - POLYCOTTON
CLASSIC LOUNGE SHIRT
LS / SS**



**AT1037 - SLIM FIT
LOUNGE SHIRT
LS**



**AT283 | AS283
UNISEX POLAR FLEECE
WITH POCKETS**



**AT1058 - MENS SOFT SHELL
JACKET WITH POCKETS**



**AT397 - MENS SLEEVELESS
PUFFER JACKET**



**AT397B - MENS SLEEVELESS
PUFFER JACKET WITH DIAMOND
STITCHING**



**AS857 - STOCK
'CLASSIC ORIGINALS'
MENS FLAT FRONT CHINOS**

- Premier brand at wholesale pricing
- Washed twill
- Back jet pocket
- YKK Zipper

Size: Men 30 - 44

AS150F-TECH - STOCK - LADIES
SHIRT SHAPED WITH FLAP PKTS
SS, STONE, OLIVE & CHARCOAL



AT150 - LDS CLASSIC
SHAPED LS SHIRT WITH SLEEVE TAB



AT150B - LDS CLASSIC
SHAPED SS SHIRT



AS150G-TECH - STOCK - LADIES CLASSIC
SHAPED SHIRT LONG SLEEVE
STONE, OLIVE & CHARCOAL



AT990B - LADIES BUTTON DOWN DRESS
WITH SELF FABRIC WAIST BELT
NO POCKETS



AXKVLL-TUL - LDS ¾
SLEEVES, SHAPED HEM

AXKVLL-JAS - MANDARIN
COLLAR DETAIL AT THE
NECKLINE, SS



AT1047 - LADIES
¾ SLEEVE SHIRT
1/4 BUTTONSTAND



AT1059G - SS - LADIES SOFT SHELL
HIP LENGTH JACKET WITH ZIP POCKETS - GREY
• Full Front Zip • Shaped Style
• Hemmed Sleeve Cuffs
SIZE: XS-5XL



AT737B - LADIES L/LENGTH
QUILTED S/LESS JACKET



LADIES PF TOP, RAGLAN SLV, PKTS, INNER COLLAR
AS1008CG - CHARCOAL
Fabric: Normal Polar Fleece Size: S - 2XL



AT1008 - LADIES
PF TOP, RAGLAN SLEEVE, PKTS,
COLOURS



AT772A - LADIES
ALINE 70CM KNEE
SKIRT



AT066H - LADIES
MANAGEMENT SKIRT
FRONT ZIP, KNEE LENGTH
54CM



AXCM-KW1-460
LADIES CORE SKIRT,
64CM UNLINED



AXCM-TWH-460 - LADIES
LOW RISE STRAIGHT LEG
PANTS



AT1026 - LADIES CHINO
LOW RISE FLAT
FRONT TROUSERS



AS747B
LADIES STONE / KHAKE
MID RISE FLAT FRONT TROUSERS • Fabric: Polycotton Twill
Size: Ladies 28 - 48





AT1004LS - MENS MANDARIN
OPEN NECK COLLAR, COVERED
BUTTONSTAND SHIRT
LS / SS



AT131B - MENS MANDARIN
COLLAR SHIRT SS WITH COVERED
BUTTONSTAND



AT371B - MENS MANDARIN
COLLAR SHIRT
LS



AT371 - MENS MANDARIN
COLLAR SS SHIRT



AT131 - MENS MANDARIN
COLLAR SHIRT LS OPT
PKT AND TRIM



AT159B - MENS MANDARIN
COLLAR SS SHIRT WITH
OPT PKTS & TRIM



AT870 - UNISEX
WAISTCOAT FULLY LINED



AXKVLO-PLA-LS - MENS
CLASSIC LOUNGE SHIRT
LS / SS



AXCM-TG1-460 - MENS
SERVICE STAFF POLY
TROUSERS



AS857 - STOCK
'CLASSIC ORIGINALS' MENS FLAT
FRONT CHINOS, STONE, KHAKI
OAK & OLIVE



EC41A - V-NECK
TUXEDO APRON



AT1048 - BISTRO
CONTRAST HALF APRON



AXTO33 - BAR APRON
WITH POCKET



AT1076 - HALF APRON
WITH PIPED POCKET



AT1063LS - LADIES OPEN
MANDARIN COLLAR SHIRT LS
COVERED B/S



AT1063SS - LADIES OPEN
MANDARIN COLLAR SHIRT SS
COVERED B/S



AT729B - LADIES BUTTONUP MANDARIN
COLLAR SHIRT SS



AT1073 - LADIES LS
SHIRT SHAPED MANDARIN
NECKLINE



AXKVLL-MAD - LADIES POLYCOTTON
¾ SLEEVE FEMININE CUT BLOUSE



AT159D - LADIES MANDARIN COLLAR
BUTTONUP SHIRT SS
OPT PKTS AND TRIM



EC33A - BAR APRON WITH
POCKET AND OPTIONAL
STRIPES



AXCM-TW6-460
LADIES FORMAL MIDRISE
BOOTLEG PANTS



AT159 - LADIES OPEN NECK
SHIRT SS OPT PKTS AND TRIM



AXKVLL-ONY - ¾ SLEEVES
WITH CONTRAST TURN-UP
CUFFS



AXKVLL-SAG - ¾ SLEEVE BLOUSE
CONTRAST INNER CUFFS AND
COLLAR STAND



AT1047 - LADIES
¾ SLEEVE SHIRT
1/4 B/S



AT964
LADIES SPA TOP

AXKVTU-IVY - LADIES TUNIC
MANDARIN COLLAR, SS



AXDCNIT2M
LADIES SPA TOP

AT966 - LADIES SS V NECKLINE
TUNIC



AXCM-TW6-460
- LADIES FORMAL MIDRISE
BOOTLEG PANTS POLYESTER



AT833B - SPA TABARD - LONGER
LENGTH , SIDE BUTTON CLOSURES
FULL FRONT DOUBLE PKT



AT014 - LADIES
DRAWSTRING CAPRI
PANTS



AT987B - LADIES 3/4
COMFORT PULL ON PANTS
POLYESTER



AT044 / AT047-210
RANGERS TWILL BUSH SHIRT
WITH ROLL UP TABS LS OR SS



AS044-TECH / AS047-TECH - STOCK - RANGERS BUSH
SHIRT WITH ROLL UP TABS LS OR SS
OLIVE, STONE OR CHARCOAL



AXTOBLS - TRACKER BUSH
SHIRT GLADNECK LS
AXTOBSS - TRACKER BUSH
SHIRT GLADNECK SS



AS047-145 / AS044-145
MENS BUSH SHIRT WITH
FRONT YOKE AND
VELCRO FLAP POCKETS



UNISEX POLAR FLEECE
POLAR FLEECE TOP WITH POCKETS
AS283CG - CHARCOAL
Fabric: Polar Fleece Normal



AS857CHI - STOCK MENS FLAT FRONT 'CLASSIC
ORIGINAL ' CHINOS - STONE, KHAKI, OAK & OLIVE

CARGO



AS857COL-240
MENS CARGO PANTS
FLAT FRONT - OLIVE

AS856COL-240
MENS CARGO SHORTS
FLAT FRONT - OLIVE



AXCY6PANWORK
- 6 PANEL DURABLE
WORKWEAR CAP



AXCYBUSHHAT
- BUSH HAT WITH SIDE STUDS,
WIDE BRIM AND NECK CORD



AT001 - POLAR
FLEECE BEANIE



AS395OL - OLIVE
PARKA JACKET WITH
POLAR FLEECE LINING
Zip off Hood / Fabric: 210GM Polytwill
Size: XS - 3XL



AS150 - STOCK - LADIES TECH BUSH SHIRT LS AND SS SHAPED WITH FLAP PKTS, STONE, OLIVE & CHARCOAL



AT735 - LADIES BUSH SHIRT WITH A ROUNDED COLLAR SS



AT787 - LADIES BUSH SHIRT WITH A ROUNDED COLLAR LS



AT150V - LADIES SHIRT CLASSIC SHAPED WITH BACK VENT



AT747B - LADIES CHINOS MIDRISE FLAT FRONT TROUSERS



AT1026 - LADIES LOW RISE FLAT FRONT CHINOS



AT747E / AT747F - LADIES CARGO MIDRISE FLAT FRONT SHORTS

AS3950L - OLIVE UNISEX SLEEVELESS PARKA JACKET WITH POLAR FLEECE LINING
Zip off Hood
Fabric: 210GM Polytwill
Size: XS - 3XL



AT1059-SS - LADIES SOFT SHELL JACKET WITH POCKETS



AS1008CG - CHARCOAL LADIES PF TOP, RAGLAN SLV, PKTS, INNER COLLAR
Fabric: Normal Polar Fleece
Size: S - 2XL

AT1008 LADIES PF TOP, RAGLAN SLEEVE, PKTS, COLOURWAY OF YOUR CHOICE



**ASTMPARKA-OL - OLIVE
CORE RANGE PARKA
NYLON WITH HOOD 2 POCKETS**
Fabric: Oxford Nylon WP
Size: S - 3XL



**AS2830S - STOCK - MENS PF TOP
WITH POCKETS**
OLIVE / STONE



**AXTOBLS - TRACKER BUSH
SHIRT GLADNECK LS**



**AXTOBSS - TRACKER BUSH
SHIRT GLADNECK SS**



**AXTOBLSE - TRACKER BUSH
SHIRT GLADNECK LS WITH
EPAULETTES**



**AXTOBSSE - TRACKER BUSH
SHIRT GLADNECK SS WITH
EPAULETTES**



**AS3950L - OLIVE
PARKA JACKET WITH
POLAR FLEECE LINING**
Zip off Hood
Fabric: 210GM Polytwill
Size: S - 2XL



AXCY6PANWORK
- 6 PANEL DURABLE
WORKWEAR CAP



AT001
POLAR FLEECE BEANIE



AXCYASPBANIE
BEANIE KNITTED



AXTOPANTCARG
TRACKER CARGO PANTS
WITH FLY AND HALF
ELASTICATED



**AXTOPAN - TRACKER
PANTS WITH FLY
AND HALF ELASTICATED**



**AXTOSHO - TRACKER SHORTS
WITH FLY AND HALF
ELASTICATED**
**AXTOSHOC - TRACKER SHORTS
WITH CARGO POCKETS**



AXKVLAS175B
MENS BASIC POLYCOTTON
GOLFER



AXCYCLASSICT
COMBED COTTON
165G TSHIRT



AXKVC5-APC - CORE ACID
RESISTANT POLY COTTON
CONTI SUIT, OLIVE

AXTOBOIL
MENS ONE PIECE
OVERALL



AXWZ-1112 - PREMIUM
CONTI TOP 2 TONE 65/35
POLYCOTTON TWILL, OLIVE/KHAKI
ORDERED INDIVIDUALLY



ASBECONTI-KH
KHAKI
CONTI SUIT



AXCY6PANWORK
6 PANEL DURABLE
WORKWEAR CAP



AXWZ-1113
CONTI PANTS 65/35
POLY COTTON TWILL, OLIVE
ORDERED INDIVIDUALLY



ASTMPARKA-OL - OLIVE
CORE RANGE PARKA
NYLON WITH HOOD 2 POCKETS
Fabric: Oxford Nylon WP
Size: S - 3XL



AXTOBLSE - TRACKER BUSH
SHIRT GLADNECK LS WITH
EPAULETTES



AXTOBSSE - TRACKER BUSH
SHIRT GLADNECK SS WITH
EPAULETTES



AXTOBSS-DEN
DENIM SHIRT SS OR LS



AXTOPAN
PANTS WITH
FLY AND HALF
ELASTICATED

AXTOCOMMOCK
MENS MOCK COMBAT
SECURITY TROUSERS



AXTOCOMFULL
MENS FULL COMBAT
SECURITY TROUSER



AXARJC-AL-136-A
MENS PUFFER JACKET
WITH A METAL ZIP AND ZIP POCKETS
ELASTICATED CUFFS AND HEM
GREY



AXWZ-HUD-BLACK
MENS PUFFER JACKET



AXMSFJK
WINTER SECURITY
NYLON JACKET



AS395OL - OLIVE
PARKA JACKET WITH POLAR FLEECE LINING
Zip off Hood / Fabric: 210GM Polytwill
Size: S - 2XL



AT750
MANAGERS JACKET



AT1070 - WINDBREAKER BASIC
UNLINED WITH A FOLD-IN
HOOD



AT397 - MENS RIGID
SLEEVELESS PUFFER
JACKET



AT397B - MENS SLEEVELESS
PUFFER JACKET WITH DIAMOND
STITCHING



AT1058G-SS - MENS SOFTSHELL JACKET
WITH FRONT ZIP POCKETS - GREY
Full Front Zip, Sleeve with hemmed Cuffs
Size:XS - 5XL



AT1058C - MENS SOFTSHELL
JACKET - ZIP-OFF SLVS
WITH PKTS



AT1058B - MENS SOFTSHELL
JACKET SLEEVELESS
WITH PKTS



AT737B - LADIES L/LENGTH QUILTED S/LESS JACKET



AXARJC - AL-137-A
LADIES DELUXE PUFFER JACKET
METAL ZIP AND ZIP POCKETS
ELASTIC SLEEVE CUFFS



AXWZ-HUL
LADIES PUFFER JACKET



AT502 - LADIES PADDED JACKET



AT737C - LADIES QUILTED S/LESS JACKET WITH SIDE PANELS



AT010 - LADIES BUSH STYLE JACKET



AS1059G-SS
LADIES SOFT SHELL HIP LENGTH JACKET
WITH ZIP POCKETS - GREY
SIZE: XS - 5XL



AT1059C - LADIES SOFT SHELL JACKET
WITH ZIP-OFF SLEEVES AND PKTS



AT1059B - LADIES SOFT SHELL JACKET
SLEEVELESS WITH PKTS



AXKVLTR-JAC - LDS NYLON
WIND & WATER RESISTANT LS JACKET



AT813 - LADIES CLASSIC
JACKET WITH POLAR
FLEECE LINING

Manufactured to your colour and trim detail - wide choice of fabric types and weights. 6/8 week delivery. See Stock for immediate delivery



AS283CG - STOCK - UNISEX POLAR FLEECE
TOP WITH POCKETS, PLAIN CHARCOAL



AS283OS - STOCK - UNISEX POLAR FLEECE
TOP WITH POCKETS



AT283D - MENS ZIP-OFF
SLV PF TOP WITH PKTS



AT283C - UNISEX S/LESS
PF TOP WITH PKTS



AS283AB-NOR - STOCK - UNISEX SERVICE
STAFF PF TOP WITH NO POCKETS, BLACK



AS1008CG - STOCK
LADIES PF TOP,
RAGLAN SLV WITH PKTS,
CHARCOAL



AT1008 - LDS PF TOP,
RAGLAN SLV WITH PKTS



AT1008D - LDS PF
ZIP-OFF SLV WITH
PKTS



AT1008C - LDS PF
SLVLESS TOP WITH
PKTS



AT1003 - LADIES FITTED RAGLAN
SLEEVE POLAR FLEECE TOP
WITH PKTS



AT026C - LADIES FITTED
SLEEVELESS POLAR FLEECE
TOP



AT1008A - LADIES POLAR FLEECE
TOP, RAGLAN SLEEVE, NO PKTS
TOP



AT566F - PONCHO CLOSED NECK
UNLINED KNEE LENGTH
WP OXFORD NYLON
134W X 97Lcm

AT566E - PONCHO CLOSED NECK PF
LINED KNEE LENGTH
WP OXFORD NYLON & POLAR FLEECE
134W X 97Lcm



ASTMPPIO - LAST BUY - ADULTS LINED PONCHO
DURABLE - HEAVY RUBBERISED
AND POLAR FLEECE LINED, IN A BAG
1,2M LONG

At566 - PONCHO PF LINED, KNEE LENGTH
AT566C - PONCHO PF LINED ANKLE LENGTH
AT566B - PONCHO PF LINED CALF LENGTH
AT566D - PONCHO UNLINED KNEE LENGTH
AT556G-NOR - PONCHO PF CALF 1,2M UNLINED



ASTMPONO - STOCK - PONCHO - DURABLE
RUBBERISED AND WATERPROOF,
OLIVE, 1,2M LONG
Fabric: Nylon - S size: OSFA

AXTMRAINCOAT - RAINCOAT
IN A BAG - 1 PIECE



KIDS



ASTMKIDPONO - LAST BUY - KIDS PONCHO
RUBBERISED AND WATERPROOF,
OLIVE, 69L X 78W
Fabric: Nylon - S size: OSFA



AXTMRAINSUIT
RAINSUIT IN A BAG
2 PIECE



LUXURY BUSH BLANKET
AT456A - 145 X 145CM
AT456B - 145 X 200CM
PC TWILL & POLAR FLEECE



PF BLANKET RAW CUT EDGE
AT454F - 140 X 100
AT454E - 140 X 150
AT454G - 140 X 200



PF BLANKET HEMMED EDGE
AT454D - 140 X 150
AT454C - 140 X 180
AT454H - 140 X 200



AT453 - HOT WATERBOTTLE
cover only

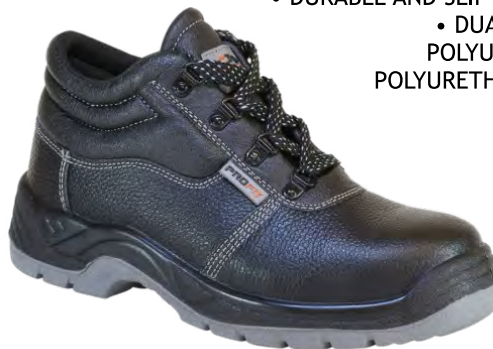
**UNISEX WORKWEAR SHOE - STC
AYPBHOBOS - STC**

- GENUINE LEATHER •
- BLACK ENTRY LEVEL UNISEX SAFETY SHOE •
- 200 JOULE RESISTANT STEEL TOE CAP •
- WIDE FITTING FOR COMFORT •
- DURABLE AND SLIP RESISTANT •
- DUAL DENSITY POLYURETHANE/POLYURETHANE SOLE •
- STEEL TOE CAP •
- NO MOQ •



**UNISEX WORKWEAR BOOT - STC
AYPBHOB OB - STC**

- GENUINE LEATHER •
- BLACK ENTRY LEVEL UNISEX SAFETY BOOT •
- 200 JOULE RESISTANT STEEL TOE CAP •
- WIDE FITTING FOR COMFORT •
- DURABLE AND SLIP RESISTANT •
- DUAL DENSITY •
- POLYURETHANE/ •
- POLYURETHANE SOLE •
- NO MOQ •



**LEATHER CHELSEA BOOT
AYDO-CHELSBR**

- WELL-PRICED •
- BROWN LEATHER BOOT •
- SABS & EU QUALITY APPROVAL •
- SLIP, OIL & HEAT RESISTANT •
- STEEL TOE CAP •
- A PADDED HEEL •
- WIDER CUT FOR COMFORT •
- MOQ 50 UNITS •



**UNISEX CHEFS CLOG LEATHER SLIPON LEMAITRE
AYBN8008 - STC**

- AYBN8007 - NSTC
- SLIP RESISTANT SOLE
- MOQ 10 UNITS



LEMAITRE

**BISTRO WORK
AYFFBISTRO**

- NON-STEEL TOE CAP
- MOQ 10 UNITS



crocs™

* MINIMUM ORDER OF 20

**UNISEX SLIP ON SERVICE SHOE
AYKVSF007**

- SINGLE DENSITY PU SOLE
- WATER RESISTANT
- ANTI-STATIC & ANTI-SLIP
- OIL RESISTANT
- NON-STEEL TOE CAP
- NO MOQ



120gm POLYCOTTON SHIRTING - Easy care and cool



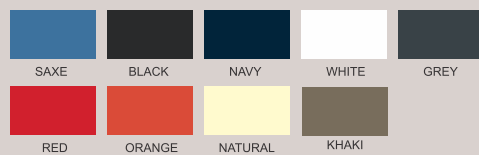
145gm 100% COTTON TWILL - Pre shrunk, light and cool cotton



220gm 100% COTTON TWILL



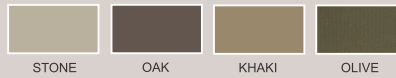
220Egm 100% COTTON TWILL



SHWE SHWE



235g 100 % BRUSHED COTTON TWILL - SABS quality approved



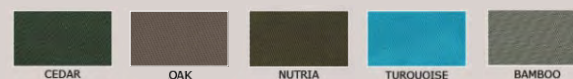
160gm POLYCOTTON TWILL - lighter and durable



200Egm POLYCOTTON TWILL



210gm POLYCOTTON TWILL



CHECKS & STRIPES POLYCOTTON TWILL



160gm 100% POLYESTER - mechanical stretch



POLAR FLEECE MICRO 200gm, anti pill, technical

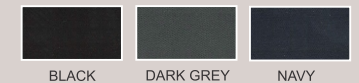


POLAR FLEECE NORMAL - 250gm, anti pill



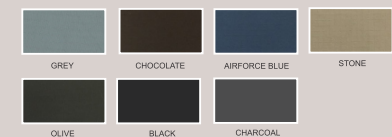
SOFTSHELL

- breathable
- waterproof
- mens and ladies jackets
- bonded with fleece inner



TECHNICAL FABRIC

- antiwicking quick dry
- UV protection
- easy care with shape retention
- cool and colour fast



Please request an actual sample garment to confirm your sizing before placing your order as the information below is only a guideline. No returns if garments are supplied as per your order.

General Metric Conversion Table

INCHES:	28	30	32	34	36	38	40	42	44	46	48
CMS:	71	76	81	87	92	97	102	107	112	117	122

Men's Lounge Shirts

Measure under your arms, around your back and around the top part of your chest with your arms at your sides

ORDER:	32	34	36	38	40	42	44	46	48	50	52	54
Metric Size:	81	87	92	97	102	107	112	117	122	127	132	137
Approx S, M, L:	S	S	S	M	M	L	L	XL	2XL	3XL	4XL	5XL

Unisex Tunics & Men's Bush Shirts - cut on the larger size

Measure under your arms, around your back and around the top part of your chest with your arms at your sides

ORDER:	XS	S	M	L	XL	2XL	3XL	4XL
Inch Size:	30-32	34-36	38-40	42-44	46-48	50-52	54-56	58-60

Men's Trousers and Shorts - measure around your waist

ORDER:	28	30	32	34	36	38	40	42	44	46	48
Metric Size:	71	76	81	87	92	97	102	107	112	117	122

Ladies Polar Fleece Top 1008 / Soft Shell Jacket 1059

ORDER:	XS	S	M	L	XL	2XL	3XL
Inch Size:	30	32-34	36-38	40	42	44	46

Unisex polar Fleece Tops 283 - 2 inch overall allowance

ORDER:	S	M	L	XL	2XL	3XL	4XL	5XL
Inch Size:	34-36	38-40	42-44	46	48	50	52	54

Overalls—conti suits are ordered by chest measurement

- our suggestion is to order 1 size bigger than chest measurement to allow for movement and clothing to be worn under the suits
- conti pants in the set are 2 sizes smaller per industry norm - see below
- above based on a slim body type, larger body types to order 2 sizes bigger
- please order a sizing set before placing your order as there are no returns on conti suits correctly supplied

Conti suit sets

ORDER Top Size:	32	34	36	38	40	42	44	46	48	50
Pants - elasticated:	28	30	32	34	36	38	40	42	44	46

When ordering conti pants only

Please order 1 size you need to confirm the general sizing as there are no returns on conti pants correctly supplied

Your waist size:	28	30	32	34	36	38	40	42	44	46	48
Pants relaxed:	26	28	30	32	34	36	38	40	42	44	46
Pants full stretched:	36	38	40	42	44	46	48	50	52	54	56

Ladies Size Chart for Shirts and Tops

Measure under your arms, around your back and around the largest part of your bust with your arms at your sides

ORDER:	28	30	32	34	36	38	40	42	44	46
Metric Size:	72	77	82	87	92	97	102	107	112	117
Approx S, M, L:	XS	S	S	M	M	L	XL	2XL	3XL	4XL

Ladies pants and skirts

Measure around your hips 2 fingers above where the trouser lower waistband would sit

ORDER:	28	30	32	34	36	38	40	42	44	46	48	50	52	54
Metric Size:	72	77	82	87	92	97	102	107	112	117	122	127	132	137

Chefs Double Breasted Jackets

Order:	30	32	34	36	38	40	42	44	46	48	50	52	54
Metric Size:	76	81	87	92	97	102	107	112	117	122	127	132	137
Half Chest:	43	46	49	52	55	58	61	63	67	70	72	74	77
Approx Alpha Size:	XS	XS	S	S	M	M	L	L	XL	XL	2XL	3XL	3XL

Chef Flap Shirts

Order:	S	M	L	XL	2XL	3XL	4XL	5XL
Metric Size:	92-97	102-107	112	117-122	127-132	137-142	147	152
Inch Size:	36-38	40-42	44	46-48	50-52	54-56	58	60
Half Chest:	56	58	61	67	72	78	82	87

Chef Elasticated Trousers

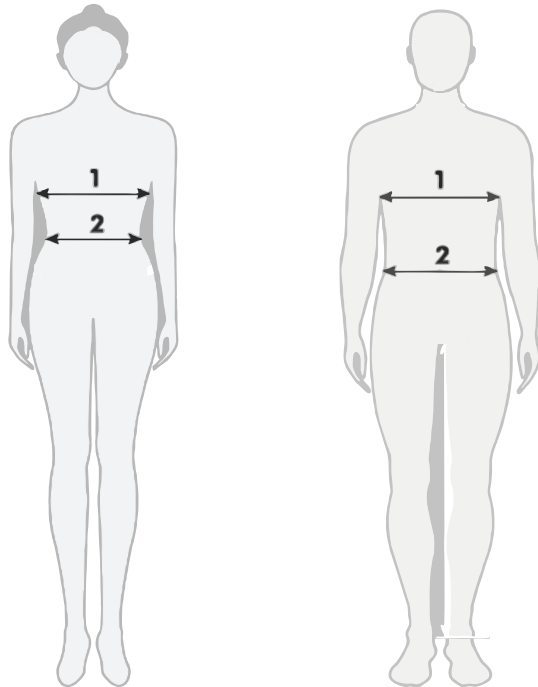
Order:	XS	S	M	L	XL	2XL	3XL	4XL	5XL
Inch Size:	26-28	30	32	34-36	38-40	42-44	46-48	50-52	52-54
Metric Size:	67-72	77	82	87-92	97-102	107-112	117-122	127-132	132-137

1 - LADIES BUST: Measure at the fullest part of your bust, by placing the tape measure under your arms and across your shoulder blades. Remember to breathe out when taking this measurement.

2 - LADIES WAIST: Measure your waist around the natural waistline.

1 - MENS CHEST: Measure across the widest part of the chest, under the armpits, and around the back. Ensure that the tape is horizontal all the way around the body. (Do not allow it to dip at the back).

2 - MENS WAIST: Decide where you want your trousers to sit (on the hips, above the hips) and measure at this position. Ensure that the tape is horizontal to the ground



COTTON GARMENT WASH CARE

- Cold water wash
- Do not tumble dry
- Garments must be rinsed thoroughly - modern washing powder contains optical bleach which, when poorly rinsed, reacts with the sun to bleach the fabric
- Perspiration will bleach the colour from cotton garments
- Allow up to 5% shrinkage
- Cotton fabric and colour is unfortunately not guaranteed due to the varying wash care and working conditions per client

WASHING AND GARMENT CARE INFORMATION

- Cold water wash
- Do not tumble dry.
- Garments must be rinsed thoroughly
- Cool iron must be used on all fabrics except nylons and polar fleece materials (No Ironing)
- Do not iron on the screenprints or the embroideries
- Do not use bleach as this will weaken the fibres

WASHCARE GUIDELINES - HOW TO INCREASE YOUR WARDROBE LIFE SPAN:

Washing:

- Avoid harsh bar soaps and bleaches as they cause discolouring
- Use very little fabric softener as this tends to weaken fibres

How to reduce creasing:

- Hang up garment after wearing. Fasten zips and buttons to help the garment keep its shape
- Jackets should be placed on a hanger when not being worn
- Hang washable garments on hanger whilst damp and minor creases should drop out
- When ironing is required, iron on the reverse side to prevent "shining"

Drying:

- Fasten all buttons & hang inside out, especially dark colours
- If garments are left out in the sun all day they will be bleached by the sun

Stain removal:

- Always carefully remove stains before washing or drying as heat can make stains permanent

TREATING STAINS:

Antiperspirant: Make a paste with bicarbonate of soda and salt and

apply to stain for about 15 minutes. Soak in detergent and then wash as normal.

Ball Point Pen: Sponge with methylated spirits or Eau-de-Cologne. Any remaining stain should then be rubbed with soap and washed as normal.

Alcohol or Food: Use soda water. Place a towel under area. Fizz soda and rub in towards the centre of the spot.

Blood: Mop with tissues & soak in strongly salted cold water. Keep changing the salt-water solution until it runs clear. Sponge any remaining stain with warm water. Rinse with cold water. Wash the whole garment before the stain dries using a detergent.

Chewing Gum: Put the stained garment in a plastic bag and freeze overnight. Gum should scrape off easily, or brush egg white onto gum stains with a toothbrush and wash normally.

Coffee and Tea: Soak in lukewarm detergent solution. (Always dissolve the detergent in water soaking). Then treat with methylated spirits.

Fruit and Fruit Juices: Rub the stain with salt before washing.

Rinse in cold water and soak in liquid detergent. (See care label)

Oil: Eucalyptus oil is an excellent oil and grease stain remover (from pharmacy). Using a cotton swab, apply to stained area and then wash as per the care instructions.

Tomato Sauce: Rinse in cold water and soak in liquid detergent. If necessary, treat with methylated spirits.

HAND WASHING:

- Fill a bucket or deep sink with warm water and about a ¼ cup of detergent
- Put your clothing in the water and leave to soak for a while if stained
- Knead the clothing with your hands in the water for a few minutes, as much as you would knead bread
- Rinse the clothing until water runs clear, not soapy
- Wring out the garment gently
- Turn garments inside out and close any buttons' or zips
- Hang out to dry on a clothes line or a well-ventilated area