

Tel: 0861 4 32433 | sales@africantusk.co.za | www.africantusk.co.za

**\* REDUCED PRICE STOCK ESSENTIAL GARMENTS**



**HOTEL & LODGES | RESTAURANT | CULINARY & TRAINING SCHOOLS**

**SERVICE | QUALITY | COMFORT | PRICING | VALUE |**

**crocs™**

**LEMAITRE**

# FABRICS, COLOURS & WASHCARE



## 160gm TWILL

- 65% polyester / 35% cotton
- lightweight for hot kitchens

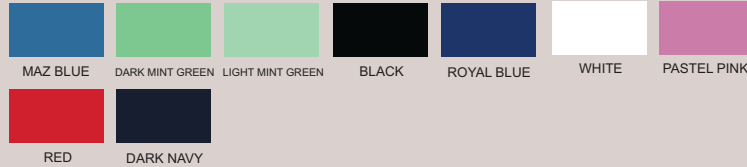
Please note that our colour swatches can represent slightly differently on individual screens. So, should you need critical colour matches please request a physical swatch as we cannot be held liable for incorrect colours via email viewing.



## 190gm POPLIN

- square weave poplin
- 65% polyester / 35% cotton
- soft, durable and comfortable

Please note that our colour swatches can represent slightly differently on individual screens. So, should you need critical colour matches please request a physical swatch as we cannot be held liable for incorrect colours via email viewing.



## 200Egm TWILL

- 65% polyester / 35% cotton
- most popular
- durable
- colourfast
- AXTO1 / 17 / 18 coded garments

Please note that our colour swatches can represent slightly differently on individual screens. So, should you need critical colour matches please request a physical swatch as we cannot be held liable for incorrect colours via email viewing.



## 210gm P/C TWILL

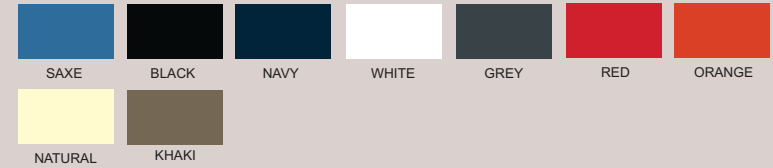
- 80% polyester / 20% cotton
- durable
- colourfast
- EC coded garments

Please note that our colour swatches can represent slightly differently on individual screens. So, should you need critical colour matches please request a physical swatch as we cannot be held liable for incorrect colours via email viewing.



## 220Egm 100% COTTON TWILL

Please note that our colour swatches can represent slightly differently on individual screens. So, should you need critical colour matches please request a physical swatch as we cannot be held liable for incorrect colours via email viewing.



## CHECKS & STRIPES

- printed onto a 200gm p/c twill

Please note that our colour swatches can represent slightly differently on individual screens. So, should you need critical colour matches please request a physical swatch as we cannot be held liable for incorrect colours via email viewing.



## DENIM

- jackets and aprons



## WASH CARE GUIDELINES: HOW TO INCREASE YOUR GARMENT LIFE SPAN

### COTTON GARMENT WASH CARE

- Cold water wash
- Do not tumble dry
- Garments must be rinsed thoroughly - modern washing
- powder contains optical bleach which, when poorly rinsed, reacts with the sun to bleach the fabric
- Perspiration will bleach the colour from cotton garments
- Allow up to 5% shrinkage
- Cotton fabric and colour is unfortunately not guaranteed due to the varying wash care and working conditions per client

### WASHING AND GARMENT CARE INFORMATION

- Cold water wash
- Do not tumble dry
- Garments must be rinsed thoroughly
- Cool iron must be used on all fabrics except nylons and polar fleece materials (No Ironing)
- Do not iron on the screenprints or the embroideries
- Do not use bleach as this will weaken the fibres

### GUIDELINES:

#### Washing:

Avoid harsh bar soaps and bleaches as they cause discolouring. Use very little fabric softener as this tends to weaken fibres.

#### How to reduce creasing:

Hang washable garments on hanger whilst damp and minor creases should drop out.

When ironing is required, iron on the reverse side to prevent "shining".

#### Drying:

Fasten all buttons & hang inside out, especially dark colours. If garments are left out in the sun all day they will be bleached by the sun.

#### Stain removal:

Always carefully remove stains before washing or drying as heat can make stains permanent.

### TREATING STAINS:

**Antiperspirant:** Make a paste with bicarbonate of soda and salt and apply to stain for about 15 minutes. Soak in detergent and then wash as normal.

**Ball Point Pen:** Sponge with methylated spirits or Eau-de-Cologne. Any remaining stain should then be rubbed with soap and washed as normal.

**Alcohol or Food:** Use soda water. Place a towel under area. Fizz soda and rub in towards the centre of the spot.

**Blood:** Mop with tissues & soak in strongly salted cold water. Keep changing the salt-water solution until it runs clear.

Sponge any remaining stain with warm water. Rinse with cold water. Wash the whole garment before the stain dries using a detergent.

**Chewing Gum:** Put the stained garment in a plastic bag and freeze overnight. Gum should scrape off easily, or brush egg white onto gum stains with a toothbrush and wash normally.

**Fruit and Fruit Juices:** Rub the stain with salt before washing. Rinse in cold water and soak in liquid detergent. (See care label)

**Oil:** Eucalyptus oil is an excellent oil and grease stain remover (from pharmacy). Using a cotton swab, apply to stained area and then wash as per the care instructions.

**Tomato Sauce:** Rinse in cold water and soak in liquid detergent. If necessary, treat with methylated spirits.

### TREATING STAINS: Please follow these easy steps for Hand Washing:

Fill a bucket or deep sink with warm water and about a ¼ cup of detergent.

Add to the water and leave to soak for a while if stained. Knead the clothing with your hands in the water for a few minutes, as much as you would knead bread.

Rinse the clothing until water runs clear. Wring out the garment gently.

Turn garments inside out and close any buttons' or zips. Hang out to dry on a clothes line or a well-ventilated area.

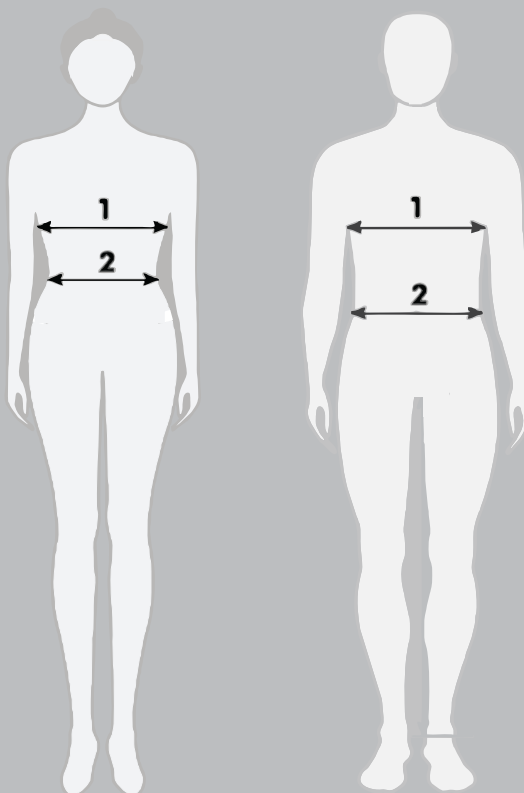
## MEASURING & SIZING

# MEASURING

## LADIES

**1 - LADIES BUST:** Measure at the fullest part of your bust, by placing the tape measure under your arms and across your shoulder blades. Remember to breathe out when taking this measurement.

**2 - LADIES WAIST:** Measure your waist around the natural waistline.



## MENS

**1 - MENS CHEST:** Measure across the widest part of the chest, under the armpits, and around the back. Ensure that the tape is horizontal all the way around the body. (Do not allow it to dip at the back).

**2 - MENS WAIST:** Decide where you want your trousers to sit (on the hips, above the hips) and measure at this position. Ensure that the tape is horizontal to the ground.

### SIZING

Please request an actual sample garment to confirm your sizing before placing your order as the information below is only a guideline. No returns if garments are supplied as per your order.

#### Chefs Double Breasted Jackets

Order:	32	34	36	38	40	42	44	46	48	50	52	54
Metric Size:	81	87	92	97	102	107	112	117	122	127	132	137
Half Chest:	46	49	52	55	58	61	63	67	70	72	74	77
Approx Alpha Size:			S		M		L	XL	2XL	3XL	4XL	5XL

#### Chef Flap Shirts

Order:	S	M	L	XL	2XL	3XL	4XL	5XL
Metric Size:	92-97	102-107	112	117-122	127-132	137-142	147	152
Inch Size:	36-38	40-42	44	46-48	50-52	54-56	58	60
Half Chest:	56	58	61	67	72	78	82	87

#### Chef Elasticated Trousers

Order:	S	M	L	XL	2XL	3XL	4XL	5XL
Inch Size:	26-28	30-32	34-36	38-40	42-44	46-48	50-52	52-54
Metric Size:	66-71	76-81	87-92	97-102	107-112	117-122	127-132	132-137

### SHOES

Please order 1 pair of the size you need to confirm the general shoe size - no returns or swaps on shoe orders correctly supplied.



## STOCK ESSENTIAL - JACKET & PANTS

manufactured using a DURABLE polycotton



**NEW  
PRICING**

**ASBE1-PC-W**  
DOUBLE BREASTED LONG  
SLEEVE JACKET WITH  
FOLD-UP CUFFS AND WHITE  
REMOVABLE POPPERS  
SIZING: S - 3XL  
200GM POLYCOTTON TWILL

from  
**R149**



**NEW  
PRICING**

**ASBE11-PC-B**  
CHEFS ELASTICAED  
PANTS / BAGGIES  
WITH 3 POCKETS  
AND INNER  
DRAWCORD  
SIZING: S - 3XL  
200GM POLYCOTTON TWILL

from  
**R159**



## STOCK GARMENTS

manufactured using a DURABLE polycotton



**EP9 - BIB APRON WITH  
NECK ADJUSTER AND  
ROUNDED POCKET**  
72W X 86Lcm  
• BLACK • WHITE

from  
**R95**from  
**R91**

**EP9 - FULL BUTCHERS  
APRON WITH NECK ADJUSTER  
AND ROUNDED POCKET**  
72W X 86Lcm  
• BLUE & WHITE STRIPES

from  
**R100**

**EP7 - BANDANNA OR DOEK,  
TRIANGULAR**  
100 X 70 X 70cm  
• BLACK • WHITE

from  
**R52**

**EP6 - CHEFS BEANIE WITH TONAL  
TOPPIPING AND HIDDEN  
VELCRO CLOSER**  
7,5H X 18cm  
• BLACK • WHITE

from  
**R62**from  
**R56**

**EP8 - HALF APRON WITH  
RECTANGULAR POCKET**  
98W X 77Lcm  
• BLACK • WHITE

from  
**R101**from  
**R97**from  
**R458**

**ES2B - EXECUTIVE CHEFS JACKET  
WITH PIPING, FRENCH  
CUFFS & UNDERARM EYELETS**  
210gm p/c twill

## COMMIS FLAP SHIRTS



AXTO17

from  
**R224**

- unisex
- pricewise & durable
- short sleeves
- sleeve pen / thermometer pocket
- front flap with press stud closer
- front chest yoke
- fabric and colour choices
- optional 3/4 or long sleeves with cuffs
- optional contrast / shwe shwe fabric
- sizes s - 5xl



EC17B

from  
**R343**

## COMMIS DOUBLE BREASTED JACKETS

Double breasted - reversible front



AXTO1 - LONG SLEEVE

from  
**R253**

- unisex
- double breasted for maximum front protection
- can be worn left or right
- long sleeves with cuff or short sleeve
- left sleeve pen / thermometer pocket
- black or white poppers
- matching ladies unshaped style EC24 / EC24SS
- fabric and colour choices
- optional contrast collar and cuffs
- optional shwe shwe detail
- sizes 28 - 70



AXTO18 - SHORT SLEEVE

from  
**R227**

## EXECUTIVE SINGLE FRONT PIPING



**EC2B**

from  
**R519**

- mens
- collar, cuff and front flap piping
- double breasted for maximum front protection
- left sleeve pen / thermometer pocket
- underarm eyelets
- black or white poppers
- long sleeves with french cuffs or short sleeve with sleeve piping
- optional contrast collar and under cuffs
- matching ladies shaped style EC25 / EC25SS
- optional rear vents
- optional pricewise option AXTO2B
- sizes 30 - 60



**EC2BSS**

from  
**R490**



## EXECUTIVE DOUBLE FRONT PIPING



EC3

from  
**R682**

- mens
- double front piping, cuff and neck piping
- double breasted for maximum front protection
- left sleeve pen / thermometer pocket
- underarm eyelets
- black or white poppers
- short sleeves or long sleeve with french cuffs
- optional contrast collar or under cuffs
- short sleeve option EC3SS
- optional rear vents
- sizes 30 - 60



from  
**R662**

EC3SS



underarm  
eyelets



optional rear  
vent detail



french-cuff  
detail

## EXECUTIVE DOUBLE FRONT PIPING



EC3F

from  
**R682**

- mens
- double front piping, cuff and neck piping (contrast or tonal)
- double breasted for maximum front protection
- left sleeve pen / thermometer pocket
- underarm eyelets
- black or white poppers
- long sleeve with french cuffs
- contrast collar and under cuffs
- short sleeves without piping EC3FSS
- optional rear vents
- sizes 30 - 60



optional rear  
vent detail



underarm  
eyelets



french-cuff  
detail

## EXECUTIVE MOCK POCKET PIPING



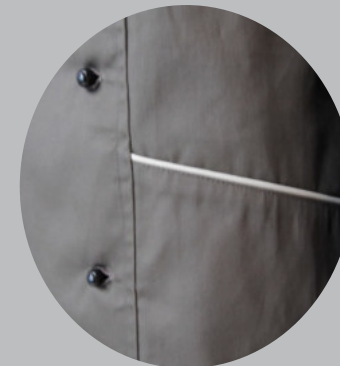
EC4

from  
**R576**

- mens
- double breasted for maximum front protection
- long sleeve with french cuffs
- left sleeve pen / thermometer pocket with piping
- front mock pockets with piping detail
- underarm eyelets
- black or white poppers
- front, cuff and neck piping
- optional short sleeves with piping EC4SS
- optional rear vents
- short sleeve option EC4SS
- sizes 30 - 60



pocket piping detail



mock front pocket piping detail



## EXECUTIVE CONCEALED BUTTONS

### MENS

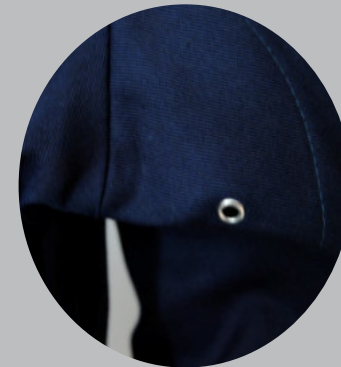


EC49

from  
**R606**

- mens
- cross over front with piping
- front and neck piping
- concealed front buttons
- long sleeve with fold up cuffs
- left sleeve pen / thermometer pocket
- underarm eyelets
- front and back shaped panels
- no rear vent option
- short sleeves with piping EC49SS
- ladies style available soon - EC48
- sizes 38 - 50

### LADIES EC48 (available soon)



underarm eyelets



pocket detail





## EXECUTIVE RAGLAN L/S, S/S OR 3/4 SLEEVE



- mens
- raglan short or 3/4 sleeve hemmed or long sleeve with foldover cuff
- cross over front
- stylish contrast front colour detail
- pop stud top closer
- concealed placket with buttons
- left sleeve pen / thermometer pocket with contrast
- back shaped panels
- side slits with contrast colour
- sizes 32 - 50



pop stud

front contrast insert



pocket detail with contrast

EC52 - 3/4 sleeve  
EC52LS - long sleeve  
EC52SS - short sleeve

from  
**R552**

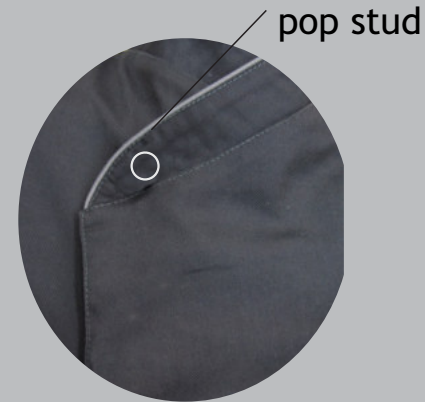
## EXECUTIVE DOUBLE PIPING



EC53

from  
**R659**

- mens
- cross over front with piping and pop stud closer
- concealed front buttons
- front pocket with double piping detail
- piping collar, pocket and sleeve cuff detail
- long sleeve with fold up cuff and double piping
- left sleeve pen / thermometer pocket
- optional short sleeves with piping EC53SS
- rear vertical vents
- sizes 38 - 50



neckline & covered button detail



vertical vents



double piping sleeve cuff detail

## LADIES EXECUTIVE SINGLE PIPING SHAPED



EC25

from  
**R495**

- ladies
- double breasted for maximum front protection
- long sleeves or short sleeves with piping
- french cuffs with piping
- piping collar, front and cuffs
- left sleeve pen / thermometer pocket
- shaped style
- 3 panel shaped back
- side slits with contrast
- black or white poppers
- optional short sleeves with piping EC25SS
- optional rear vents
- matches unisex style EC2B / ES2B
- sizes 30-50



french cuff detail



optional rear vent detail



left sleeve pen / thermometer pocket

## TROUSERS & SKIRTS, SUSHI, KIDS & BARISTA



AT747B - LADIES FLAT FRONT COTTON CHINOS

- BLACK
- STONE
- NAVY

from  
**R325**

AXCM-TGF-223 - MENS FLAT FRONT COTTON CHINOS

- BLACK
- STONE
- NAVY

from  
**R388**

AXT011B  
UNISEX CARGO ELASTICATED PANTS WITH 3 POCKETS & DRAWCORD & WITH CARGO POCKETS

- ALL COLOURS
- CHECKS & STRIPES

from  
**R266**



AXKVLAS175B - GOLFER UTILITY GOLF SHIRT POLYCOTTON

from  
**R122**

AXT040  
LADIES HALF ELASTICATED SKIRT WITH BUTTON & ZIP

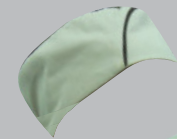
- ALL COLOURS
- CHECKS & STRIPES

from  
**R229**

AXT011  
UNISEX ELASTICATED PANTS WITH 3 POCKETS & DRAWCORD

- ALL COLOURS
- CHECKS & STRIPES
- DENIM

from  
**R226**



### SUSHI



EC47 - SUSHI BOAT STYLE BEANIE WITH PIPING DETAIL

from  
**R89**

EC46 - WRAP STYLE SUSHI CHEF TOP WITH SIDE TIE AND FRONT POCKET 3/4 SLEEVE

from  
**R344**

### BARISTA

AT870  
WAISTCOAT WITH 4 BUTTONS & BACK BUCKLE

- ALL FABRICS
- ALL COLOURS

from  
**R338**

AXCM-TG1-460  
TROUSER - PLEATED SERVICE POLYESTER

- BLACK
- NAVY

from  
**R295**

EC33A  
BAR APRON 59W X 46Lcm WITH RECTANGULAR POCKET

- ALL FABRICS
- ALL COLOURS

from  
**R133**



AT1004  
BARISTA SHIRT WITH MANDARIN COLLAR & COVERED FRONT BUTTON STAND

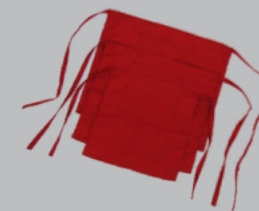
from  
**R304**



AXKVL0-PLA  
MENS CLASSIC LOUNGE SHIRT

from  
**R258**

from  
**R268**



EC17K  
KIDS CHEFS FLAP SHIRT WITH PRESS STUDS & SHORT SLEEVES

- ALL COLOURS
- AGES 4/8/12

from  
**R218**



EC8K  
KIDS HALF APRON WITH RECTANGLE POCKET

- ALL COLOURS
- AGES 4/8/12

from  
**R106**

EC5K - KIDS MUSHROOM HAT WITH VELCRO ADJUSTER

- ALL COLOURS
- OSFA

from  
**R104**

### KIDS AGES 4/8/12





## HALF APRONS



**AXT033**  
BAR APRON WITH POCKET  
59W X 46Lcm  
• ALL COLOURS

from  
**R76**

**EC33A**  
HALF APRON WITH  
Twill POCKET STRIPES  
54W X 46Lcm  
• ALL COLOURS



**AXT08**  
HALF APRON WITH  
RECTANGLE POCKET  
98W X 77Lcm  
• ALL COLOURS  
• STOCK EP8 WHITE  
• STOCK EP8 BLACK  
• CHECKS & STRIPES  
• DENIM

from  
**R101**



**AT953C**  
• CONTRAST WAISTBAND  
• FOLD OVER WAIST TO  
COVER TIES  
• WRAP AROUND WAIST  
• SIDE LOOP FOR DISH TOWEL  
• ONE SIDE POCKET  
• FRONT SLIT  
• 86CM (LENGTH)  
• 96CM (WIDTH AT WAIST)  
• 66CM (WIDTH AT HEM)  
• MITRED BACK IE. TAPERED  
FROM TOP TO BOTTOM

from  
**R190**

**AT1076** - HALF APRON  
WITH PIPED POCKET

from  
**R181**

## CHEFS HALF APRON

**AT1071**  
• FRONT SLIT  
• V-SHAPED POCKET  
• TIES TO BACK  
OR FRONT  
• 77CM IN LENGTH  
• MITRED BACK IE.  
TAPERED FROM TOP  
TO BOTTOM

from  
**R193**



**AT509** - 93cm Long  
WAITERS WRAP APRON WITH  
REAR MITRED CORNERS

from  
**R231**

**AT509B** - 79cm Long  
• ALL COLOURS

from  
**R221**



**AT1048**  
HALF APRON WITH FRONT  
TIES AND A CONTRAST POCKET  
63W X 80Lcm  
• ALL COLOURS

from  
**R164**



**AT1049**  
WAITERS HALF APRON WITH  
CONTRASTING STITCHING,  
2 PEN SLOTS, OFF-CENTRE POCKET  
& FRONT TIES  
• ALL COLOURS

from  
**R126**

**CUSTOM HALF APRON**  
WE CAN DESIGN ANY  
APRON YOU REQUIRE  
• ALL COLOURS & DESIGNS



**AT953**  
FOLD OVER WAITERS APRON,  
FRONT SPLIT, SIDE POCKET,  
FRONT TIES & CLOTH LOOP  
96W X 89Lcm

from  
**R190**



## FULL APRONS



**AXT09**  
FULL FRONT BIB APRON  
WITH ROUND POCKET  
& NECK ADJUSTER  
• ALL COLOURS  
• STOCK EP9 WHITE  
• STOCK EP9 BLACK  
• STRIPES OR CHECKS  
• DENIM

from  
**R95**



PVC

**AXFWAPRON PVC**  
FULL FRONT  
70W X 110Hcm  
• WHITE

from  
**R79**



### CHEFS FULL APRON

**AT919**  
EXECUTIVE BIB APRON  
LARGER 85X106cm,  
WITH FRONT POCKET  
& ADJUSTABLE  
NECK STRAP  
85W X 106Lcm  
• ALL COLOURS

from  
**R192**



**AT919B - DENIM**  
EXECUTIVE BIB APRON  
LARGER 85X106cm,  
WITH FRONT POCKET  
& ADJUSTABLE  
NECK STRAP  
85W X 106Lcm

from  
**R253**



**EC41A**  
TUXEDO APRON WITH  
FRONT POCKET  
• ALL COLOURS

from  
**R241**



**AT1050**  
FULL FRONT BIB APRON  
WITH CONTRAST WIDE  
POCKET & TOP METAL  
HORIZONTAL ZIP DETAIL  
• ALL COLOURS

from  
**R197**



**AT1022**  
SOMMELIER ROUND  
NECK APRON  
• ALL COLOURS

from  
**R269**



**CUSTOM FULL APRON**  
FULL APRON  
WE CAN DESIGN ANY  
APRON YOU REQUIRE  
• ALL COLOURS  
• ALL DESIGNS  
• ALL FABRICS



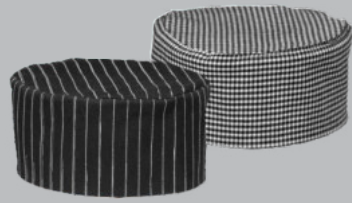
## HEADWEAR



EP6 - STOCK - BLACK AND WHITE 7,5 X 18CM  
WITH COVERED VELCRO AND TOP PIPING

from  
**R62**

from  
**R56**



AXTO6 - ALL COLOURS / CHECKS & STRIPES  
7,5 X 18CM WITH COVERED VELCRO AND TOP PIPING

from  
**R62**



EC6D - CLOSED COVERED REAR ELASTIC  
10 X 18CM WITH TOP PIPING

from  
**R68**



EC6E - OPEN COVERED REAR ELASTIC  
10 X 18CM WITH TOP PIPING

from  
**R86**



EC6 - ELASTIC CLOSER, NO PIPING  
10 X 18CM

from  
**R68**

EC6A - ELASTIC CLOSER, NO PIPING  
12 X 18CM

from  
**R71**



EC6B - ELASTIC CLOSER  
10 X 18CM WITH TOP PIPING

from  
**R79**



from  
**R92**

EC44 - CHEFS BEANIE WITH V BACK AND COVERED VELCRO ADJUSTER  
• ALL COLOURS • STRIPES AND CHECKS • OPTIONAL CONTRAST CROWN SECTION



from  
**R27**

AXCY5PANEL - 5 PANEL FLAT FRONT CAP  
• MOST COLOURS



from  
**R60**

AXCYCLASSIC6 - CLASSIC 6 PANEL BASEBALL CAP  
• MOST COLOURS



from  
**R69**

AXTOTORCHON  
CHEFS PADDED COTTON SERVING CLOTH



AXTO5 - CHEFS HAT  
WITH VELCRO ADJUSTER  
• ALL COLOURS

from  
**R95**



EC21 - BANDANNA WITH PANELS  
• ALL COLOURS

from  
**R72**



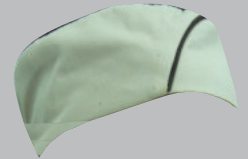
AXTO7 - BANDANNA OR DOEK, TRIANGULAR, 100 X 70 X 70cm  
• ALL COLOURS • STOCK EP7 WHITE • STOCK EP7 BLACK

from  
**R52**



AXKVBC-S  
CHEF SKULL CAP MESH SIDES  
• MOST COLOURS  
(Black, White, Red, Lime)

from  
**R81**



EC47 - SUSHI BOAT  
STYLE BEANIE WITH  
PIPING DETAIL

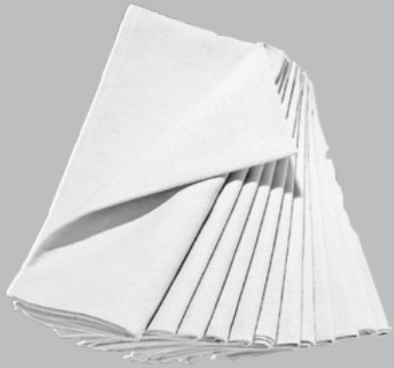
from  
**R89**





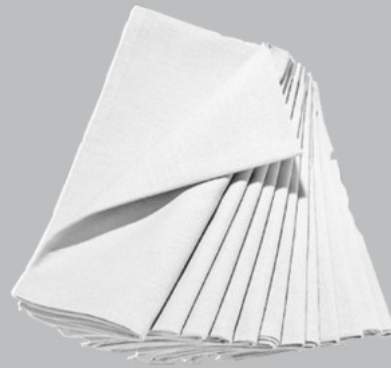
## NAPKINS & TABLECLOTHS

200gm polycotton twill or 220gm cotton twill



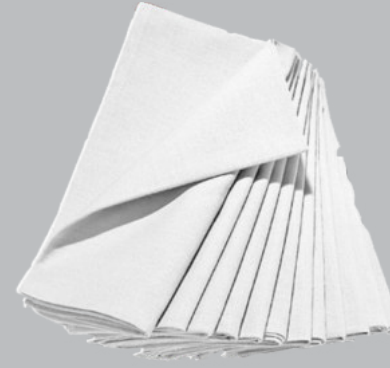
**AXTONP30C**  
30 X 30cm NAPKINS  
• ALL COLOURS

from  
**R15**



**AXTONP40C**  
40 X 40cm NAPKINS  
• ALL COLOURS

from  
**R20**



**AXTONP50C**  
50 X 50cm NAPKINS  
• ALL COLOURS

from  
**R28**



**AXTOOL90C**  
90 X 90cm OVERLAYS  
• ALL COLOURS

from  
**R113**



from  
**R166**

**AXTOTC143C**  
43 X 143cm TABLECLOTH  
• RECTANGULAR  
• ALL COLOURS



from  
**R226**

**AXTOTC200C**  
143 X 200cm TABLECLOTH  
• RECTANGULAR  
• ALL COLOURS



from  
**R278**

**AXTOTC250C**  
143 X 250cm TABLECLOTH  
• RECTANGULAR  
• ALL COLOURS



from  
**R339**

**AXTOTC300C**  
143 X 300cm TABLECLOTH  
• RECTANGULAR  
• ALL COLOURS



from  
**R393**

**AXTOTC350C**  
143 X 350cm TABLECLOTH  
• RECTANGULAR  
• ALL COLOURS



from  
**R453**

**AXTOTC400C**  
143 X 400cm TABLECLOTH  
• RECTANGULAR  
• ALL COLOURS

Choose locally manufactured quality chefs and kitchen garments - choose





## SHOES AND CLOGS

NO EXCHANGE OR RETURNS  
ON CORRECTLY SUPPLIED SIZES



\*excluding Bata  
MINIMUM ORDER OF 10 UNITS PER STYLE

UNISEX CHEFS CLOG LEATHER SLIPON LEMAITRE  
(Ladies order one size smaller than men)

AYBN8008 - STC  
AYBN8007 - NSTC  
• Slip resistant sole

from  
**R624**



**LEMAITRE**

UNISEX LEMAITRE  
GENERAL ALL PURPOSE SHOE

AYBN8102 - STC  
AYBN8091 - NSTC  
• Slip resistant sole

from  
**R498**



**LEMAITRE**

LADIES LEATHER LACE-UP SHOE,

• STC  
• NSTC  
AYS154001  
• Slip resistant sole

from  
**R480**



**Sisi**  
SAFETY FOOTWEAR

CONTRACT WORKWEAR

• STC  
AYFR8401

from  
**R279**



LADIES CHEF CLOG WHITE  
NSTC - MIN 20  
AYBTLDSMULE-W

from  
**R142**



**Bata**  
MINIMUM ORDER OF 20

MENS CHEF CLOG WHITE  
NSTC - MIN 20  
AYBTMNSMULE-W

from  
**R168**

LADIES CHEF CLOG BLACK  
NSTC - MIN 20  
AYBTLDSMULE-B

from  
**R118**



**Bata**  
MINIMUM ORDER OF 20

MENS CHEF CLOG BLACK  
NSTC - MIN 20  
AYBTMNSMULE-B

from  
**R133**

BISTRO WORK  
AYFFBISTRO

from  
**R486**



**crocs**  
MINIMUM ORDER OF 20

Choose locally manufactured quality chefs and kitchen garments - choose **eChef**