

since 1990



NATIONAL NUMBER

Tel: 0861-4-echef

0861-4-32433

sales@echef.co.za

www.echef.co.za

August 2019

CAPE TOWN

GAUTENG

GARDEN ROUTE



eChef is a corporate member and sponsor

DEMAND THE BEST LOCAL QUALITY

1600 GARMENTS
MANUFACTURED PER DAY

200 000m
FABRIC IN STOCK

OVER 100
FACTORY STAFF

STATE OF THE ART AUTOMATED
GERBER MACHINES FOR CUTTING
AND LAYUP

CATEGORIES

WE SUPPLY INTERNATIONALLY
HOTELS & LODGES
RESTAURANTS
CULINARY & TRAINING SCHOOLS



IS ALSO SUPPLIED BY OUR ASSOCIATE

LEVEL 2 BEE

AFRI UNIFORM & CHEF
(contact us for details)



NEW MENS AND LADIES EXECUTIVE CHEF JACKET RANGE LAUNCHING SOON

SERVICE | QUALITY | COMFORT | PRICING | VALUE |

crocs™





160gm TWILL

- 65% polyester / 35% cotton
- lightweight for hot kitchens

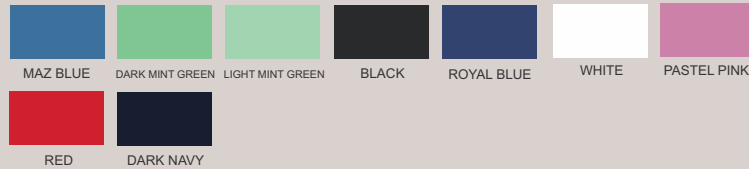
Please note that our colour swatches can represent slightly differently on individual screens. So, should you need critical colour matches please request a physical swatch as we cannot be held liable for incorrect colours via email viewing.



190gm POPLIN

- square weave poplin
- 65% polyester / 35% cotton
- soft, durable and comfortable

Please note that our colour swatches can represent slightly differently on individual screens. So, should you need critical colour matches please request a physical swatch as we cannot be held liable for incorrect colours via email viewing.



200gm TWILL

- 65% polyester / 35% cotton
- most popular
- durable
- colourfast
- AXTO1 / 17 / 18 coded garments

Please note that our colour swatches can represent slightly differently on individual screens. So, should you need critical colour matches please request a physical swatch as we cannot be held liable for incorrect colours via email viewing.



210gm P/C TWILL

- 80% polyester / 20% cotton
- durable
- colourfast
- EC coded garments

Please note that our colour swatches can represent slightly differently on individual screens. So, should you need critical colour matches please request a physical swatch as we cannot be held liable for incorrect colours via email viewing.



220gm 100% COTTON TWILL

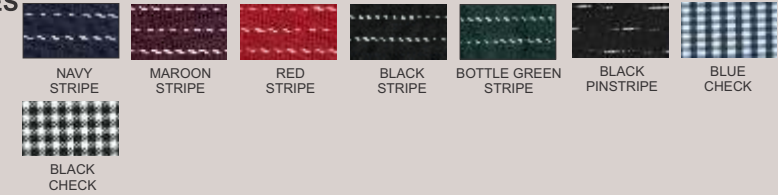
Please note that our colour swatches can represent slightly differently on individual screens. So, should you need critical colour matches please request a physical swatch as we cannot be held liable for incorrect colours via email viewing.



CHECKS & STRIPES

- printed onto a 200gm p/c twill

Please note that our colour swatches can represent slightly differently on individual screens. So, should you need critical colour matches please request a physical swatch as we cannot be held liable for incorrect colours via email viewing.



DENIM

- printed onto a 200gm p/c twill



WASH CARE GUIDELINES: HOW TO INCREASE YOUR GARMENT LIFE SPAN

COTTON GARMENT WASH CARE

- Cold water wash
- Do not tumble dry
- Garments must be rinsed thoroughly - modern washing
- powder contains optical bleach which, when poorly rinsed, reacts with the sun to bleach the fabric
- Perspiration will bleach the colour from cotton garments
- Allow up to 5% shrinkage
- Cotton fabric and colour is unfortunately not guaranteed due to the varying wash care and working conditions per client

WASHING AND GARMENT CARE INFORMATION

- Cold water wash
- Do not tumble dry
- Garments must be rinsed thoroughly
- Cool iron must be used on all fabrics except nylons and polar fleece materials (No Ironing)
- Do not iron on the screenprints or the embroideries
- Do not use bleach as this will weaken the fibres

GUIDELINES:

Washing:

Avoid harsh bar soaps and bleaches as they cause discolouring. Use very little fabric softener as this tends to weaken fibres.

How to reduce creasing:

Hang washable garments on hanger whilst damp and minor creases should drop out.

When ironing is required, iron on the reverse side to prevent "shining".

Drying:

Fasten all buttons & hang inside out, especially dark colours.

If garments are left out in the sun all day they will be bleached by the sun.

Stain removal:

Always carefully remove stains before washing or drying as heat can make stains permanent.

TREATING STAINS:

Antiperspirant: Make a paste with bicarbonate of soda and salt and apply to stain for about 15 minutes. Soak in detergent and then wash as normal.

Ball Point Pen: Sponge with methylated spirits or Eau-de-Cologne. Any remaining stain should then be rubbed with soap and washed as normal.

Alcohol or Food: Use soda water. Place a towel under area. Fizz soda and rub in towards the centre of the spot.

Blood: Mop with tissues & soak in strongly salted cold water. Keep changing the salt-water solution until it runs clear.

Sponge any remaining stain with warm water. Rinse with cold water. Wash the whole garment before the stain dries using a detergent.

Chewing Gum: Put the stained garment in a plastic bag and freeze overnight. Gum should scrape off easily, or brush egg white onto gum stains with a toothbrush and wash normally.

Fruit and Fruit Juices: Rub the stain with salt before washing. Rinse in cold water and soak in liquid detergent. (See care label)

Oil: Eucalyptus oil is an excellent oil and grease stain remover (from pharmacy). Using a cotton swab, apply to stained area and then wash as per the care instructions.

Tomato Sauce: Rinse in cold water and soak in liquid detergent. If necessary, treat with methylated spirits.

TREATING STAINS: Please follow these easy steps for Hand Washing:

Fill a bucket or deep sink with warm water and about a ¼ cup of detergent.

Add to the water and leave to soak for a while if stained.

Knead the clothing with your hands in the water for a few minutes, as much as you would knead bread.

Rinse the clothing until water runs clear.

Wring out the garment gently.

Turn garments inside out and close any buttons' or zips.

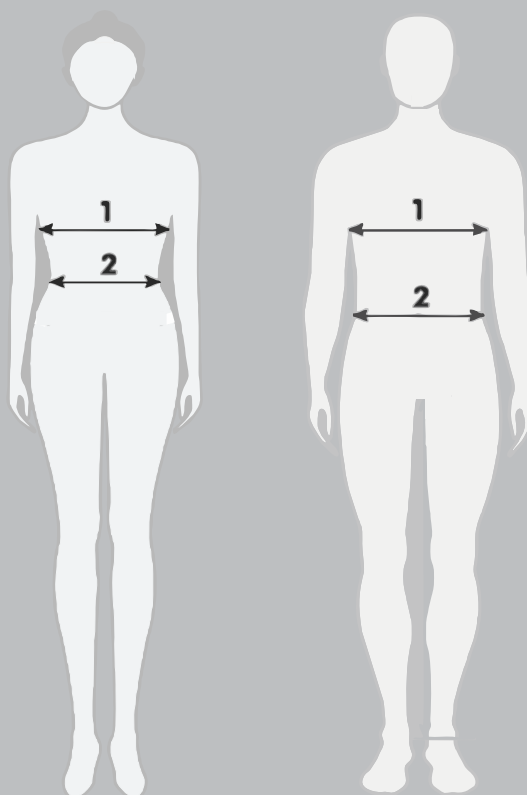
Hang out to dry on a clothes line or a well-ventilated area.

MEASURING

LADIES

1 - LADIES BUST: Measure at the fullest part of your bust, by placing the tape measure under your arms and across your shoulder blades, Remember to breathe out when taking this measurement.

2 - LADIES WAIST: Measure your waist around the natural waistline.



MENS

1 - MENS CHEST: Measure across the widest part of the chest, under the armpits, and around the back. Ensure that the tape is horizontal all the way around the body. (Do not allow it to dip at the back).

2 - MENS WAIST: Decide where you want your trousers to sit (on the hips, above the hips) and measure at this position. Ensure that the tape is horizontal to the ground.

SIZING

Please request an actual sample garment to confirm your sizing before placing your order as the information below is only a guideline. No returns if garments are supplied as per your order.

Chefs Double Breasted Jackets

Order:	32	34	36	38	40	42	44	46	48	50	52	54
Metric Size:	81	87	92	97	102	107	112	117	122	127	132	137
Half Chest:	46	49	52	55	58	61	63	67	70	72	74	77
Approx Alpha Size:			S		M		L	XL	2XL	3XL	4XL	5XL

Chef Flap Shirts

Order:	S	M	L	XL	2XL	3XL	4XL	5XL
Metric Size:	92-97	102-107	112	117-122	127-132	137-142	147	152
Inch Size:	36-38	40-42	44	46-48	50-52	54-56	58	60
Half Chest:	56	58	61	67	72	78	82	87

Chef Elasticated Trousers

Order:	S	M	L	XL	2XL	3XL	4XL	5XL
Inch Size:	26-28	30-32	34-36	38-40	42-44	46-48	50-52	52-54
Metric Size:	66-71	76-81	87-92	97-102	107-112	117-122	127-132	132-137

SHOES

Please order 1 pair of the size you need to confirm the general shoe size - no returns or swaps on shoe orders correctly supplied.



STOCK JACKETS

manufactured using a DURABLE polycotton



ES2B
EXECUTIVE MENS
BLACK WITH WHITE PIPING



ES2B - EXECUTIVE CHEFS JACKET
WITH PIPING, FRENCH
CUFFS & UNDERARM EYELETS
210gm p/c twill

ES2B
EXECUTIVE MENS
WHITE WITH BLACK PIPING

EP17 - BLACK
FLAP SHIRT UNISEX



CHEFS FLAP SHIRT WITH PRESS STUDS
& SHORT SLEEVES
200gm Versatex twill

EP17 - WHITE
FLAP SHIRT UNISEX



EP1 - WHITE
D/BREASTED L/S MENS
(SHORT SLEEVES ALSO AVAILABLE AXTO18 WHITE)



EP1 - CHEFS JACKET,
DOUBLE BREASTED WITH WHITE
POPPERS, LONG SLEEVES
200gm Versatex twill

Choose locally manufactured quality chefs and kitchen garments - choose



STOCK GARMENTS

manufactured using a DURABLE polycotton



**EP9 - BIB APRON WITH
NECK ADJUSTER AND
ROUNDED POCKET**
72W X 86Lcm
• BLACK • WHITE

**EP9 - FULL BUTCHERS
APRON WITH NECK ADJUSTER
AND ROUNDED POCKET**
72W X 86Lcm
• BLUE & WHITE STRIPES

**EP7 - BANDANNA OR DOEK,
TRIANGULAR**
100 X 70 X 70cm
• BLACK • WHITE



**EP6 - CHEFS BEANIE WITH TONAL
TOPPING AND HIDDEN
VELCRO CLOSER**
7,5H X 18cm
• BLACK • WHITE



**EP11
UNISEX ELASTICATED
PANTS WITH 3 POCKETS
& DRAWCORD**
• BLACK
• BLUE CHECK



**EP8 - HALF APRON WITH
RECTANGULAR POCKET**
98W X 77Lcm
• BLACK • WHITE

COMMIS FLAP SHIRTS



AXTO17

- unisex
- pricewise & durable
- short sleeves
- sleeve pen / thermometer pocket
- front flap with press stud closer
- front chest yoke
- fabric and colour choices
- optional 3/4 or long sleeves with cuffs
- optional contrast / shwe shwe fabric
- sizes s - 5xl



EC17B

COMMIS DOUBLE BREASTED JACKETS

Double breasted - reversible front



AXTO1 - LONG SLEEVE

- unisex
- double breasted for maximum front protection
- can be worn left or right
- long sleeves with cuff or short sleeve
- left sleeve pen / thermometer pocket
- black or white poppers
- matching ladies unshaped style EC24 / EC24SS
- fabric and colour choices
- optional contrast collar and cuffs
- optional shwe shwe detail
- sizes 28 - 70



AXTO18 - SHORT SLEEVE

EXECUTIVE SINGLE FRONT PIPING



EC2B

- mens
- collar, cuff and front flap piping
- double breasted for maximum front protection
- left sleeve pen / thermometer pocket
- underarm eyelets
- black or white poppers
- long sleeves with french cuffs or short sleeve with sleeve piping
- optional contrast collar and under cuffs
- matching ladies shaped style EC25 / EC25SS
- optional rear vents
- optional pricewise option AXTO2B
- sizes 30 - 60



EC2BSS

EXECUTIVE DOUBLE FRONT PIPING



EC3

- mens
- double front piping, cuff and neck piping
- double breasted for maximum front protection
- left sleeve pen / thermometer pocket
- underarm eyelets
- black or white poppers
- short sleeves or long sleeve with french cuffs
- optional contrast collar or under cuffs
- short sleeve option EC3SS
- optional rear vents
- sizes 30 - 60



EC3SS



underarm
eyelets



optional rear
vent detail



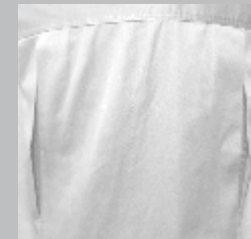
french-cuff
detail

EXECUTIVE DOUBLE FRONT PIPING



EC3F

- mens
- double front piping, cuff and neck piping (contrast or tonal)
- double breasted for maximum front protection
- left sleeve pen / thermometer pocket
- underarm eyelets
- black or white poppers
- long sleeve with french cuffs
- contrast collar and under cuffs
- short sleeves without piping EC3FSS
- optional rear vents
- sizes 30 - 60



optional rear
vent detail



underarm
eyelets



french-cuff
detail

EXECUTIVE MOCK POCKET PIPING

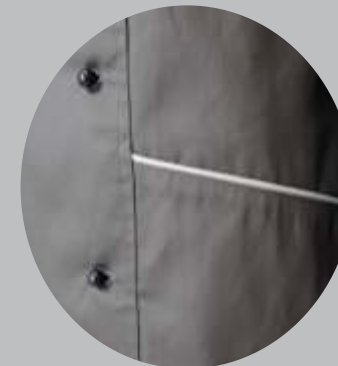


EC4

- mens
- double breasted for maximum front protection
- long sleeve with french cuffs
- left sleeve pen / thermometer pocket with piping
- front mock pockets with piping detail
- underarm eyelets
- black or white poppers
- front, cuff and neck piping
- optional short sleeves with piping EC4SS
- optional rear vents
- short sleeve option EC4SS
- sizes 30 - 60



pocket piping detail



mock front pocket piping detail



EXECUTIVE CONCEALED BUTTONS

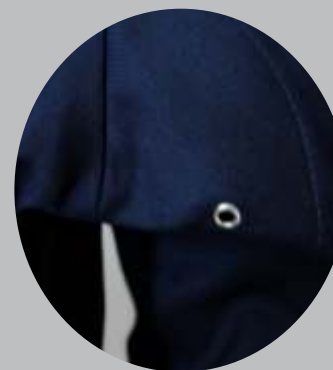
MENS



EC49

- mens
- cross over front with piping
- front and neck piping
- concealed front buttons
- long sleeve with fold up cuffs
- left sleeve pen / thermometer pocket
- underarm eyelets
- front and back shaped panels
- no rear vent option
- short sleeves with piping EC49SS
- ladies style available soon - EC48
- sizes 38 - 50

LADIES EC48 (available soon)



underarm eyelets



pocket detail

EXECUTIVE NECKLINE DETAIL



EC55

- mens
- double breasted for maximum front protection
- piping on collar, sleeve, cuffs and pockets
- long sleeve with french cuffs
- left chest inset pocket with piping
- left sleeve pen / thermometer pocket with piping
- underarm eyelets
- option short sleeves with piping EC55SS
- rear vertical vents
- black or white poppers
- sizes 38 - 50



pocket piping detail



rear vent detail

**LAUNCHING
SOON**





EXECUTIVE RAGLAN L/S, S/S OR 3/4 SLEEVE



- mens
- raglan short or 3/4 sleeve hemmed or long sleeve with foldover cuff
- cross over front
- stylish contrast front colour detail
- pop stud top closer
- concealed placket with buttons
- left sleeve pen / thermometer pocket with contrast
- back shaped panels
- side slits with contrast colour
- sizes 32 - 50



pop stud

front contrast insert



pocket detail with contrast

EC52 - 3/4 sleeve
EC52LS - long sleeve
EC52SS - short sleeve

Choose locally manufactured quality chefs and kitchen garments - choose



EXECUTIVE DOUBLE PIPING

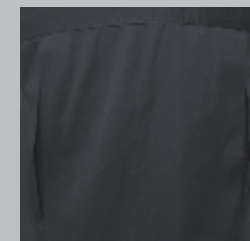


EC53

- mens
- cross over front with piping and pop stud closer
- concealed front buttons
- front pocket with double piping detail
- piping collar, pocket and sleeve cuff detail
- long sleeve with fold up cuff and double piping
- left sleeve pen / thermometer pocket
- optional short sleeves with piping EC53SS
- rear vertical vents
- sizes 38 - 50



neckline & covered button detail



vertical vents



double piping sleeve cuff detail

LADIES EXECUTIVE SINGLE PIPING SHAPED

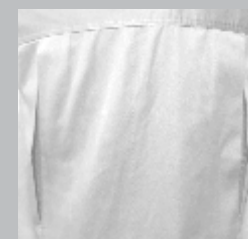


EC25

- ladies
- double breasted for maximum front protection
- long sleeves or short sleeves with piping
- french cuffs with piping
- piping collar, front and cuffs
- left sleeve pen / thermometer pocket
- shaped style
- 3 panel shaped back
- side slits with contrast
- black or white poppers
- optional short sleeves with piping EC25SS
- optional rear vents
- matches unisex style EC2B / ES2B
- sizes 30-50



french cuff detail



optional rear vent detail



left sleeve pen / thermometer pocket

LADIES EXECUTIVE - CONCEALED BUTTONS



EC51

- ladies
- double breasted front
- concealed placket front with buttons and snaps
- long sleeves with fold up cuffs or short sleeves
- shaped style
- side panels on front and 3 panel back
- left sleeve pen / thermometer pocket
- side slits
- underarm eyelets
- optional short sleeves with piping EC51SS
- optional rear vents
- sizes 30 - 50

**LAUNCHING
SOON**



concealed button placket & sleeve pocket detail



optional rear vent detail

LADIES EXECUTIVE CONCEALED BUTTONS

LADIES

- ladies
- cross over front
- front and neck piping
- concealed front buttons
- long sleeve with fold up cuffs
- left sleeve pen / thermometer pocket
- underarm eyelets
- front and back shaped panels
- optional short sleeves with piping EC48SS
- no rear vent option
- mens style available - EC49
- sizes unisex 30 - 50

**LAUNCHING
SOON**

MENS EC49



EC48



underarm eyelets



pocket detail

TROUSERS & SKIRTS, SUSHI, KIDS & BARISTA



AT747B - LADIES FLAT FRONT COTTON CHINOS

- BLACK
- STONE
- NAVY

AXCM-TGF-223 - MENS FLAT FRONT COTTON CHINOS

- BLACK
- STONE
- NAVY

AXT011B
UNISEX CARGO ELASTICATED PANTS WITH 3 POCKETS & DRAWCORD & WITH CARGO POCKETS

- ALL COLOURS
- CHECKS & STRIPES



AXKVLAS175B - GOLFER UTILITY GOLF SHIRT POLYCOTTON

AXT040

- LADIES HALF ELASTICATED SKIRT WITH BUTTON & ZIP
- ALL COLOURS
 - CHECKS & STRIPES

AXT011

- UNISEX ELASTICATED PANTS WITH 3 POCKETS & DRAWCORD
- ALL COLOURS
 - CHECKS & STRIPES
 - DENIM



EC47 - SUSHI BOAT STYLE BEANIE WITH PIPING DETAIL



EC46 - WRAP STYLE SUSHI CHEF TOP WITH SIDE TIE AND FRONT POCKET 3/4 SLEEVE



SUSHI

BARISTA

AT870

- WAISTCOAT WITH 4 BUTTONS & BACK BUCKLE
- ALL FABRICS
 - ALL COLOURS

AXCM-TG1-460
TROUSER - PLEATED SERVICE POLYESTER

- BLACK
- NAVY

EC33A

- BAR APRON 59W X 46Lcm WITH RECTANGULAR POCKET
- ALL FABRICS
 - ALL COLOURS



AT1004
BARISTA SHIRT WITH MANDARIN COLLAR & COVERED FRONT BUTTON STAND

- S/S OR L/S

AT370BLS
MENS CONTRAST LOUNGE SHIRT

- S/S OR L/S

AXKVLO-PLA
MENS CLASSIC LOUNGE SHIRT

- S/S OR L/S



EC17K

- KIDS CHEFS FLAP SHIRT WITH PRESS STUDS & SHORT SLEEVES
- ALL COLOURS
 - AGES 4/8/12

EC8K
KIDS HALF APRON WITH RECTANGLE POCKET

- ALL COLOURS
- AGES 4/8/12

EC5K - KIDS MUSHROOM HAT WITH VELCRO ADJUSTER

- ALL COLOURS
- OSFA

KIDS AGES 4/8/12



HALF APRONS

AXTO33
BAR APRON WITH POCKET
59W X 46Lcm
• ALL COLOURS



EC33A
HALF APRON WITH
TWILL POCKET STRIPES
54W X 46Lcm
• ALL COLOURS



AXTO8
HALF APRON WITH
RECTANGLE POCKET
98W X 77Lcm
• ALL COLOURS
• STOCK EP8 WHITE
• STOCK EP8 BLACK
• CHECKS & STRIPES
• DENIM



AT953C
• CONTRAST WAISTBAND
• FOLD OVER WAIST TO
COVER TIES
• WRAP AROUND WAIST
• SIDE LOOP FOR DISH TOWEL
• ONE SIDE POCKET
• FRONT SLIT
• 86CM (LENGTH)
• 96CM (WIDTH AT WAIST)
• 66CM (WIDTH AT HEM)
• MITRED BACK IE. TAPERED
FROM TOP TO BOTTOM

AT1076 - HALF APRON
WITH PIPED POCKET

CHEFS HALF APRON

AT1071
• FRONT SLIT
• V-SHAPED POCKET
• TIES TO BACK
OR FRONT
• 77CM IN LENGTH
• MITRED BACK IE.
TAPERED FROM TOP
TO BOTTOM



AT509 - 93cm Long
WAITERS WRAP APRON WITH
REAR MITRED CORNERS

AT509B - 79cm Long
• ALL COLOURS



AT1048
HALF APRON WITH FRONT
TIES AND A CONTRAST POCKET
63W X 80Lcm
• ALL COLOURS



AT1049
WAITERS HALF APRON WITH
CONTRASTING STITCHING,
2 PEN SLOTS, OFF-CENTRE POCKET
& FRONT TIES
• ALL COLOURS



CUSTOM HALF APRON
WE CAN DESIGN ANY
APRON YOU REQUIRE
• ALL COLOURS & DESIGNS



AT953
FOLD OVER WAITERS APRON,
FRONT SPLIT, SIDE POCKET,
FRONT TIES & CLOTH LOOP
96W X 89Lcm



FULL APRONS



AXT09
FULL FRONT BIB APRON
WITH ROUND POCKET
& NECK ADJUSTER
• ALL COLOURS
• STOCK EP9 WHITE
• STOCK EP9 BLACK
• STRIPES OR CHECKS
• DENIM



PVC

AXFWAPRON PVC
FULL FRONT
70W X 110Hcm
• WHITE



CHEFS FULL APRON

AT919
EXECUTIVE BIB APRON
LARGER 85X106cm,
WITH FRONT POCKET
& ADJUSTABLE
NECK STRAP
85W X 106Lcm
• ALL COLOURS



AT919B - DENIM
EXECUTIVE BIB APRON
LARGER 85X106cm,
WITH FRONT POCKET
& ADJUSTABLE
NECK STRAP
85W X 106Lcm



EC41A
TUXEDO APRON WITH
FRONT POCKET
• ALL COLOURS



AT1050
FULL FRONT BIB APRON
WITH CONTRAST WIDE
POCKET & TOP METAL
HORIZONTAL ZIP DETAIL
• ALL COLOURS



AT1022
SOMMELIER ROUND
NECK APRON
• ALL COLOURS



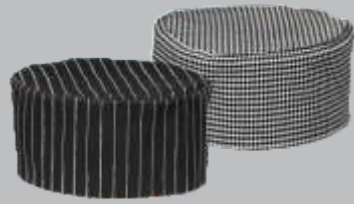
CUSTOM FULL APRON
FULL APRON
WE CAN DESIGN ANY
APRON YOU REQUIRE
• ALL COLOURS
• ALL DESIGNS
• ALL FABRICS



HEADWEAR



EP6 - STOCK - BLACK AND WHITE 7,5 X 18CM
WITH COVERED VELCRO AND TOP PIPING



AXTO6 - ALL COLOURS / CHECKS & STRIPES
7,5 X 18CM WITH COVERED VELCRO AND TOP PIPING



EC6D - CLOSED COVERED REAR ELASTIC
10 X 18CM WITH TOP PIPING



EC6E - OPEN COVERED REAR ELASTIC
10 X 18CM WITH TOP PIPING



EC6 - ELASTIC CLOSER, NO PIPING
10 X 18CM

EC6A - ELASTIC CLOSER, NO PIPING
12 X 18CM



EC6B - ELASTIC CLOSER
10 X 18CM WITH TOP PIPING



EC44 - CHEFS BEANIE WITH V BACK AND COVERED VELCRO ADJUSTER
• ALL COLOURS • STRIPES AND CHECKS • OPTIONAL CONTRAST CROWN SECTION



AXCY5PANEL - 5 PANEL FLAT FRONT CAP
• MOST COLOURS



AXCYCLASSIC6 - CLASSIC 6 PANEL BASEBALL CAP
• MOST COLOURS



AXTOTORCHON
CHEFS PADDED COTTON SERVING CLOTH



AXT05 - CHEFS HAT
WITH VELCRO ADJUSTER
• ALL COLOURS



EC21 - BANDANNA WITH PANELS
• ALL COLOURS



AXTO7 - BANDANNA OR DOEK, TRIANGULAR, 100 X 70 X 70cm
• ALL COLOURS • STOCK EP7 WHITE • STOCK EP7 BLACK



AXKVBC-5
CHEF SKULL CAP MESH SIDES
• MOST COLOURS
(Black, White, Red, Lime)



EC47 - SUSHI BOAT
STYLE BEANIE WITH
PIPING DETAIL



SHOES AND CLOGS

NO EXCHANGE OR RETURNS
ON CORRECTLY SUPPLIED SIZES



*excluding Bata
MINIMUM ORDER OF 10 UNITS PER STYLE

UNISEX CHEFS CLOG LEATHER SLIPON LEMAITRE
(Ladies order one size smaller than men)

AYBN8008 - STC
AYBN8007 - NSTC
• Slip resistant sole



LEMAITRE

LADIES CHEF CLOG WHITE
NSTC - MIN 20
AYBTLDSMULE-W

MENS CHEF CLOG WHITE
NSTC - MIN 20
AYBTMNSMULE-W



Bata
MINIMUM ORDER OF 20

UNISEX LEMAITRE
GENERAL ALL PURPOSE SHOE

AYBN8102 - STC
AYBN8091 - NSTC
• Slip resistant sole



LEMAITRE

LADIES CHEF CLOG BLACK
NSTC - MIN 20
AYBTLDSMULE-B

MENS CHEF CLOG BLACK
NSTC - MIN 20
AYBTMNSMULE-B



Bata
MINIMUM ORDER OF 20

LADIES LEATHER LACE-UP SHOE,
• STC
• NSTC
AYSIS4001
• Slip resistant sole



SISI
SAFETY FOOTWEAR

UNISEX CANVAS LACE UP SHOE
BLACK / WHITE
NAVY / WHITE
WHITE / WHITE
AYKVSF006



BISTRO WORK
AYFFBISTRO



crocs™
MINIMUM ORDER OF 10

Choose locally manufactured quality chefs and kitchen garments - choose





NAPKINS & TABLECLOTHS

200gm polycotton twill or 220gm cotton twill



AXTONP30C

30 X 30cm NAPKINS

- ALL COLOURS



AXTONP40C

40 X 40cm NAPKINS

- ALL COLOURS



AXTONP50C

50 X 50cm NAPKINS

- ALL COLOURS



AXTOOL90C

90 X 90cm OVERLAYS

- ALL COLOURS



AXTOTC143C

43 X 143cm TABLECLOTH

- RECTANGULAR
- ALL COLOURS



AXTOTC200C

143 X 200cm TABLECLOTH

- RECTANGULAR
- ALL COLOURS



AXTOTC250C

143 X 250cm TABLECLOTH

- RECTANGULAR
- ALL COLOURS



AXTOTC300C

143 X 300cm TABLECLOTH

- RECTANGULAR
- ALL COLOURS



AXTOTC350C

143 X 350cm TABLECLOTH

- RECTANGULAR
- ALL COLOURS



AXTOTC400C

143 X 400cm TABLECLOTH

- RECTANGULAR
- ALL COLOURS

Choose locally manufactured quality chefs and kitchen garments - choose

