

since 1990



NATIONAL NUMBER

Tel: 0861-4-echef

0861-4-32433

sales@echef.co.za

www.echef.co.za

August 2019

CAPE TOWN

GAUTENG

GARDEN ROUTE



eChef is a corporate member and sponsor

DEMAND THE BEST LOCAL QUALITY

1600 GARMENTS  
MANUFACTURED PER DAY

200 000m  
FABRIC IN STOCK

OVER 100  
FACTORY STAFF

STATE OF THE ART AUTOMATED  
GERBER MACHINES FOR CUTTING  
AND LAYUP

### CATEGORIES

WE SUPPLY INTERNATIONALLY  
HOTELS & LODGES  
RESTAURANTS  
CULINARY & TRAINING SCHOOLS



IS ALSO SUPPLIED BY OUR ASSOCIATE

LEVEL 2 BEE

AFRI UNIFORM & CHEF  
(contact us for details)



NEW MENS AND LADIES EXECUTIVE CHEF JACKET RANGE LAUNCHING SOON

SERVICE | QUALITY | COMFORT | PRICING | VALUE | **crocs™** **BIRKENSTOCK®**



# FABRICS, COLOURS & WASHCARE



## 160gm TWILL

- 65% polyester / 35% cotton
- lightweight for hot kitchens

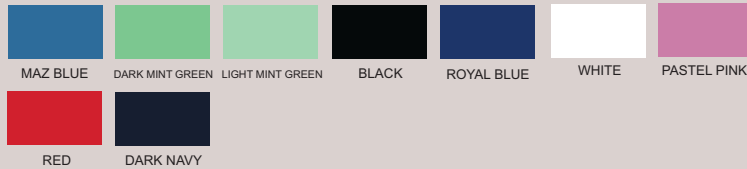
Please note that our colour swatches can represent slightly differently on individual screens. So, should you need critical colour matches please request a physical swatch as we cannot be held liable for incorrect colours via email viewing.



## 190gm POPLIN

- square weave poplin
- 65% polyester / 35% cotton
- soft, durable and comfortable

Please note that our colour swatches can represent slightly differently on individual screens. So, should you need critical colour matches please request a physical swatch as we cannot be held liable for incorrect colours via email viewing.



## 200gm TWILL

- 65% polyester / 35% cotton
- most popular
- durable
- colourfast
- AXTO1 / 17 / 18 coded garments

Please note that our colour swatches can represent slightly differently on individual screens. So, should you need critical colour matches please request a physical swatch as we cannot be held liable for incorrect colours via email viewing.



## 210gm P/C TWILL

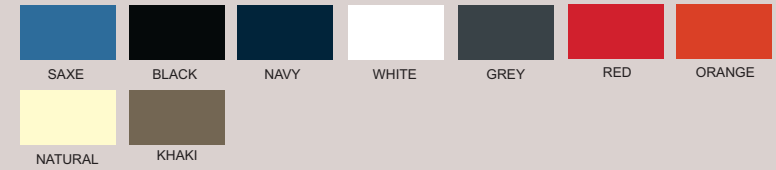
- 80% polyester / 20% cotton
- durable
- colourfast
- EC coded garments

Please note that our colour swatches can represent slightly differently on individual screens. So, should you need critical colour matches please request a physical swatch as we cannot be held liable for incorrect colours via email viewing.



## 220gm 100% COTTON TWILL

Please note that our colour swatches can represent slightly differently on individual screens. So, should you need critical colour matches please request a physical swatch as we cannot be held liable for incorrect colours via email viewing.



## CHECKS & STRIPES

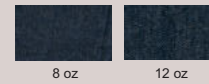
- printed onto a 200gm p/c twill

Please note that our colour swatches can represent slightly differently on individual screens. So, should you need critical colour matches please request a physical swatch as we cannot be held liable for incorrect colours via email viewing.



## DENIM

- printed onto a 200gm p/c twill



## WASH CARE GUIDELINES: HOW TO INCREASE YOUR GARMENT LIFE SPAN

### COTTON GARMENT WASH CARE

- Cold water wash
- Do not tumble dry
- Garments must be rinsed thoroughly - modern washing
- powder contains optical bleach which, when poorly rinsed, reacts with the sun to bleach the fabric
- Perspiration will bleach the colour from cotton garments
- Allow up to 5% shrinkage
- Cotton fabric and colour is unfortunately not guaranteed due to the varying wash care and working conditions per client

### WASHING AND GARMENT CARE INFORMATION

- Cold water wash
- Do not tumble dry
- Garments must be rinsed thoroughly
- Cool iron must be used on all fabrics except nylons and polar fleece materials (No Ironing)
- Do not iron on the screenprints or the embroideries
- Do not use bleach as this will weaken the fibres

### GUIDELINES:

#### Washing:

Avoid harsh bar soaps and bleaches as they cause discolouring  
Use very little fabric softener as this tends to weaken fibres

#### How to reduce creasing:

Hang washable garments on hanger whilst damp and minor creases should drop out

When ironing is required, iron on the reverse side to prevent "shining"

#### Drying:

Fasten all buttons & hang inside out, especially dark colours

If garments are left out in the sun all day they will be bleached by the sun

#### Stain removal:

Always carefully remove stains before washing or drying as heat can make stains permanent

### TREATING STAINS:

**Antiperspirant:** Make a paste with bicarbonate of soda and salt and apply to stain for about 15 minutes. Soak in detergent and then wash as normal.

**Ball Point Pen:** Sponge with methylated spirits or Eau-de-Cologne. Any remaining stain should then be rubbed with soap and washed as normal.

**Alcohol or Food:** Use soda water. Place a towel under area. Fizz soda and rub in towards the centre of the spot.

**Blood:** Mop with tissues & soak in strongly salted cold water. Keep changing the salt-water solution until it runs clear.

Sponge any remaining stain with warm water. Rinse with cold water. Wash the whole garment before the stain dries using a detergent.

**Chewing Gum:** Put the stained garment in a plastic bag and freeze overnight. Gum should scrape off easily, or brush egg white onto gum stains with a toothbrush and wash normally.

**Fruit and Fruit Juices:** Rub the stain with salt before washing. Rinse in cold water and soak in liquid detergent. (See care label)

**Oil:** Eucalyptus oil is an excellent oil and grease stain remover (from pharmacy). Using a cotton swab, apply to stained area and then wash as per the care instructions.

**Tomato Sauce:** Rinse in cold water and soak in liquid detergent. If necessary, treat with methylated spirits.

### TREATING STAINS: Please follow these easy steps for Hand Washing:

Fill a bucket or deep sink with warm water and about a ¼ cup of detergent

Add to the water and leave to soak for a while if stained  
Knead the clothing with your hands in the water for a few minutes, as much as you would knead bread

Rinse the clothing until water runs clear  
Wring out the garment gently

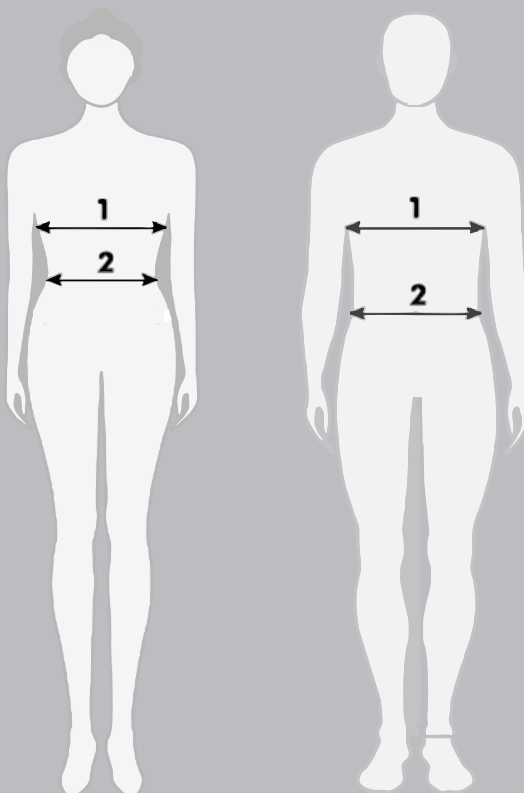
Turn garments inside out and close any buttons' or zips  
Hang out to dry on a clothes line or a well-ventilated area

# MEASURING

## LADIES

**1 - LADIES BUST:** Measure at the fullest part of your bust, by placing the tape measure under your arms and across your shoulder blades, Remember to breathe out when taking this measurement.

**2 - LADIES WAIST:** Measure your waist around the natural waistline.



## MENS

**1 - MENS CHEST:** Measure across the widest part of the chest, under the armpits, and around the back. Ensure that the tape is horizontal all the way around the body. (Do not allow it to dip at the back).

**2 - MENS WAIST:** Decide where you want your trousers to sit (on the hips, above the hips) and measure at this position. Ensure that the tape is horizontal to the ground.

## SIZING

Please request an actual sample garment to confirm your sizing before placing your order as the information below is only a guideline. No returns if garments are supplied as per your order.

### Chefs Double Breasted Jackets

Order:	32	34	36	38	40	42	44	46	48	50	52	54
Metric Size:	81	87	92	97	102	107	112	117	122	127	132	137
Half Chest:	46	49	52	55	58	61	63	67	70	72	74	77
Approx Alpha Size:			S		M		L	XL	2XL	3XL	4XL	5XL

### Chef Flap Shirts

Order:	S	M	L	XL	2XL	3XL	4XL	5XL
Metric Size:	92-97	102-107	112	117-122	127-132	137-142	147	152
Inch Size:	36-38	40-42	44	46-48	50-52	54-56	58	60
Half Chest:	56	58	61	67	72	78	82	87

### Chef Elasticated Trousers

Order:	S	M	L	XL	2XL	3XL	4XL	5XL
Inch Size:	26-28	30-32	34-36	38-40	42-44	46-48	50-52	52-54
Metric Size:	66-71	76-81	87-92	97-102	107-112	117-122	127-132	132-137

## SHOES

Please order 1 pair of the size you need to confirm the general shoe size - no returns or swaps on shoe orders correctly supplied.



## STOCK JACKETS

manufactured using a DURABLE polycotton



ES2B

**EXECUTIVE MENS**  
BLACK WITH WHITE PIPING



ES2B

**EXECUTIVE MENS**  
WHITE WITH BLACK PIPING

EP17 - BLACK  
FLAP SHIRT UNISEX



EP17 - WHITE  
FLAP SHIRT UNISEX



EP1 - WHITE

**D/BREASTED L/S MENS**  
(SHORT SLEEVES ALSO AVAILABLE AXTO18 WHITE)



ES2B - EXECUTIVE CHEFS JACKET  
WITH PIPING, FRENCH  
CUFFS & UNDERARM EYELETS  
210gm p/c twill

CHEFS FLAP SHIRT WITH PRESS STUDS  
& SHORT SLEEVES  
200gm Versatex twill

EP1 - CHEFS JACKET,  
DOUBLE BREASTED WITH WHITE  
POPPERS, LONG SLEEVES  
200gm Versatex twill

Choose locally manufactured quality chefs and kitchen garments - choose



## STOCK GARMENTS

manufactured using a DURABLE polycotton



**EP9 - BIB APRON WITH  
NECK ADJUSTER AND  
ROUNDED POCKET**  
72W X 86Lcm  
• BLACK • WHITE

**EP9 - FULL BUTCHERS  
APRON WITH NECK ADJUSTER  
AND ROUNDED POCKET**  
72W X 86Lcm  
• BLUE & WHITE STRIPES

**EP7 - BANDANNA OR DOEK,  
TRIANGULAR**  
100 X 70 X 70cm  
• BLACK • WHITE



**EP6 - CHEFS BEANIE WITH TONAL  
TOPPING AND HIDDEN  
VELCRO CLOSER**  
7,5H X 18cm  
• BLACK • WHITE



**EP11  
UNISEX ELASTICATED  
PANTS WITH 3 POCKETS  
& DRAWCORD**  
• BLACK  
• BLUE CHECK



**EP8 - HALF APRON WITH  
RECTANGULAR POCKET**  
98W X 77Lcm  
• BLACK • WHITE



## COMMIS FLAP SHIRTS



AXTO17

- unisex
- pricewise & durable
- short sleeves
- sleeve pen / thermometer pocket
- front flap with press stud closer
- front chest yoke
- fabric and colour choices
- optional 3/4 or long sleeves with cuffs
- optional contrast / shwe shwe fabric
- sizes s - 5xl



EC17B

## COMMIS DOUBLE BREASTED JACKETS

Double breasted - reversible front



**AXTO1 - LONG SLEEVE**

- unisex
- double breasted for maximum front protection
- can be worn left or right
- long sleeves with cuff or short sleeve
- left sleeve pen / thermometer pocket
- black or white poppers
- matching ladies unshaped style EC24 / EC24SS
- fabric and colour choices
- optional contrast collar and cuffs
- optional shwe shwe detail
- sizes 28 - 70



**AXTO18 - SHORT SLEEVE**

## EXECUTIVE CONTRAST COLLAR AND CUFFS



EC2

- mens
- contrast collar and cuffs
- double breasted for maximum front protection
- can be worn left or right
- long sleeves with cuff or short sleeve
- left sleeve pen / thermometer pocket
- black or white poppers
- optional rear vents
- fabric and colour choices
- optional short sleeves with no piping EC2SS
- underarm eyelets
- sizes 30 - 60



underarm  
eyelets



sleeve  
pocket detail



optional rear  
vent detail



french-cuff  
detail



## EXECUTIVE SINGLE FRONT PIPING



EC2B

- mens
- collar, cuff and front flap piping
- double breasted for maximum front protection
- left sleeve pen / thermometer pocket
- underarm eyelets
- black or white poppers
- long sleeves with french cuffs or short sleeve with sleeve piping
- optional contrast collar and under cuffs
- matching ladies shaped style EC25 / EC25SS
- optional rear vents
- optional pricewise option AXTO2B
- sizes 30 - 60



EC2BSS

## EXECUTIVE DOUBLE FRONT PIPING



EC3

- mens
- double front piping, cuff and neck piping
- double breasted for maximum front protection
- left sleeve pen / thermometer pocket
- underarm eyelets
- black or white poppers
- short sleeves or long sleeve with french cuffs
- optional contrast collar or under cuffs
- short sleeve option EC3SS
- optional rear vents
- sizes 30 - 60



EC3SS

underarm  
eyeletsoptional rear  
vent detailfrench-cuff  
detail

## EXECUTIVE DOUBLE FRONT PIPING



EC3F

- mens
- double front piping, cuff and neck piping (contrast or tonal)
- double breasted for maximum front protection
- left sleeve pen / thermometer pocket
- underarm eyelets
- black or white poppers
- long sleeve with french cuffs
- contrast collar and under cuffs
- short sleeves without piping EC3FSS
- optional rear vents
- sizes 30 - 60



optional rear vent detail



underarm eyelets



french-cuff detail

## EXECUTIVE MOCK POCKET PIPING

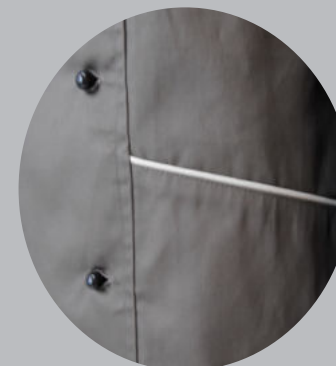


EC4

- mens
- double breasted for maximum front protection
- long sleeve with french cuffs
- left sleeve pen / thermometer pocket with piping
- front mock pockets with piping detail
- underarm eyelets
- black or white poppers
- front, cuff and neck piping
- optional short sleeves with piping EC4SS
- optional rear vents
- short sleeve option EC4SS
- sizes 30 - 60



pocket piping detail



mock front pocket piping detail



## EXECUTIVE CONCEALED BUTTONS

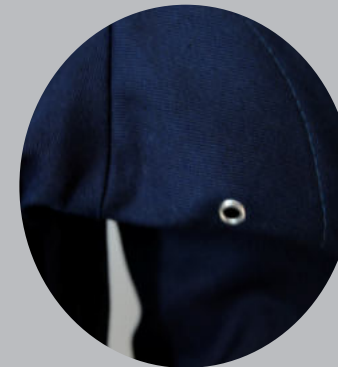
### MENS



EC49

- mens
- cross over front with piping
- front and neck piping
- concealed front buttons
- long sleeve with fold up cuffs
- left sleeve pen / thermometer pocket
- underarm eyelets
- front and back shaped panels
- no rear vent option
- short sleeves with piping EC49SS
- ladies style available soon - EC48
- sizes 38 - 50

### LADIES EC48 (available soon)



underarm eyelets



pocket detail



## EXECUTIVE NECKLINE DETAIL



EC55

- mens
- double breasted for maximum front protection
- piping on collar, sleeve, cuffs and pockets
- long sleeve with french cuffs
- left chest inset pocket with piping
- left sleeve pen / thermometer pocket with piping
- underarm eyelets
- option short sleeves with piping EC55SS
- rear vertical vents
- black or white poppers
- sizes 38 - 50



pocket piping detail



rear vent detail

**LAUNCHING  
SOON**





## EXECUTIVE RAGLAN L/S, S/S OR 3/4 SLEEVE



- mens
- raglan short or 3/4 sleeve hemmed or long sleeve with foldover cuff
- cross over front
- stylish contrast front colour detail
- pop stud top closer
- concealed placket with buttons
- left sleeve pen / thermometer pocket with contrast
- back shaped panels
- side slits with contrast colour
- sizes 32 - 50



pop stud

front contrast insert



pocket detail with contrast

EC52 - 3/4 sleeve  
EC52LS - long sleeve  
EC52SS - short sleeve

Choose locally manufactured quality chefs and kitchen garments - choose



## EXECUTIVE DOUBLE PIPING



EC53

- mens
- cross over front with piping and pop stud closer
- concealed front buttons
- front pocket with double piping detail
- piping collar, pocket and sleeve cuff detail
- long sleeve with fold up cuff and double piping
- left sleeve pen / thermometer pocket
- optional short sleeves with piping EC53SS
- rear vertical vents
- sizes 38 - 50



pop stud



vertical vents

neckline & covered button detail



double piping sleeve cuff detail

## LADIES COMMIS DOUBLE BREASTED JACKETS



**EC24**  
**LONG SLEEVE**

- ladies
- double breasted for maximum front protection
- can be worn left or right
- long sleeve with cuffs or short sleeve
- left sleeve pen / thermometer pocket
- unshaped style
- 3 panel shaped back
- black or white poppers
- fabric and colour choices
- matches unisex style EP1 / AXTO1 / AXTO18
- sizes 30-50



**EC24SS**  
**SHORT SLEEVE**

## LADIES EXECUTIVE SINGLE PIPING SHAPED



EC25

- ladies
- double breasted for maximum front protection
- long sleeves or short sleeves with piping
- french cuffs with piping
- piping collar, front and cuffs
- left sleeve pen / thermometer pocket
- shaped style
- 3 panel shaped back
- side slits with contrast
- black or white poppers
- optional short sleeves with piping EC25SS
- optional rear vents
- matches unisex style EC2B / ES2B
- sizes 30-50



french cuff detail



optional rear vent detail



left sleeve pen / thermometer pocket



## LADIES EXECUTIVE COVERED FRONT ZIP



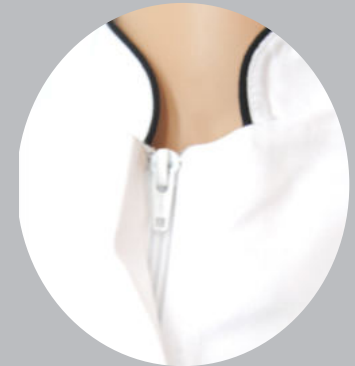
EC50

- ladies
- concealed zip front
- piping top collar, front left and right panels and cuffs
- french cuffs with piping
- long sleeve or short sleeve with piping
- underarm eyelets
- shaped style
- 3 panel shaped back
- optional short sleeves with piping EC50SS
- optional rear vents
- sizes 30 - 50

**LAUNCHING  
SOON**



eyelet detail



zip detail



optional rear  
vent detail



french cuffs detail

## LADIES EXECUTIVE - CONCEALED BUTTONS



EC51

- ladies
- double breasted front
- concealed placket front with buttons and snaps
- long sleeves with fold up cuffs or short sleeves
- shaped style
- side panels on front and 3 panel back
- left sleeve pen / thermometer pocket
- side slits
- underarm eyelets
- optional short sleeves with piping EC51SS
- optional rear vents
- sizes 30 - 50

**LAUNCHING  
SOON**



concealed button placket & sleeve pocket detail



optional rear vent detail

## LADIES EXECUTIVE CONCEALED BUTTONS

### LADIES

- ladies
- cross over front
- front and neck piping
- concealed front buttons
- long sleeve with fold up cuffs
- left sleeve pen / thermometer pocket
- underarm eyelets
- front and back shaped panels
- optional short sleeves with piping EC48SS
- no rear vent option
- mens style available - EC49
- sizes unisex 30 - 50

**LAUNCHING  
SOON**

### MENS EC49



EC48



underarm eyelets



pocket detail

## TROUSERS & SKIRTS, SUSHI, KIDS & BARISTA



**AT747B - LADIES FLAT FRONT COTTON CHINOS**

- BLACK
- STONE
- NAVY

**AXCM-TGF-223 - MENS FLAT FRONT COTTON CHINOS**

- BLACK
- STONE
- NAVY

**AXT011B**  
UNISEX CARGO ELASTICATED PANTS WITH 3 POCKETS & DRAWCORD & WITH CARGO POCKETS

- ALL COLOURS
- CHECKS & STRIPES



**AXKVLAS175B - GOLFER UTILITY GOLF SHIRT POLYCOTTON**

**AXT040**

- LADIES HALF ELASTICATED SKIRT WITH BUTTON & ZIP
- ALL COLOURS
  - CHECKS & STRIPES

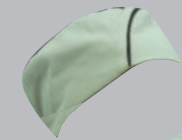
**AXT011**

- UNISEX ELASTICATED PANTS WITH 3 POCKETS & DRAWCORD
- ALL COLOURS
  - CHECKS & STRIPES
  - DENIM



**EC47 - SUSHI BOAT STYLE BEANIE WITH PIPING DETAIL**

**EC46 - WRAP STYLE SUSHI CHEF TOP WITH SIDE TIE AND FRONT POCKET 3/4 SLEEVE**



### SUSHI

### BARISTA

**AT870**

- WAISTCOAT WITH 4 BUTTONS & BACK BUCKLE
- ALL FABRICS
  - ALL COLOURS

**AXCM-TG1-460**  
TROUSER - PLEATED SERVICE POLYESTER

- BLACK
- NAVY

**EC33A**

- BAR APRON 59W X 46Lcm WITH RECTANGULAR POCKET
- ALL FABRICS
  - ALL COLOURS



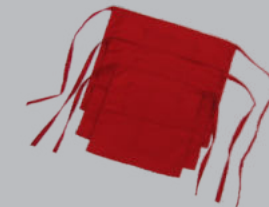
**AT1004**  
BARISTA SHIRT WITH MANDARIN COLLAR & COVERED FRONT BUTTON STAND

**AT370BLS**  
MENS CONTRAST LOUNGE SHIRT

- S/S OR L/S

**AXKVLO-PLA**  
MENS CLASSIC LOUNGE SHIRT

- S/S OR L/S



**EC17K**

- KIDS CHEFS FLAP SHIRT WITH PRESS STUDS & SHORT SLEEVES
- ALL COLOURS
  - AGES 4/8/12

**EC8K**  
KIDS HALF APRON WITH RECTANGLE POCKET

- ALL COLOURS
- AGES 4/8/12

**EC5K - KIDS MUSHROOM HAT WITH VELCRO ADJUSTER**

- ALL COLOURS
- OSFA

### KIDS AGES 4/8/12





## HALF APRONS

**AXTO33**  
BAR APRON WITH POCKET  
59W X 46Lcm  
• ALL COLOURS



**EC33A**  
HALF APRON WITH  
Twill POCKET STRIPES  
54W X 46Lcm  
• ALL COLOURS



**AXTO8**  
HALF APRON WITH  
RECTANGLE POCKET  
98W X 77Lcm  
• ALL COLOURS  
• STOCK EP8 WHITE  
• STOCK EP8 BLACK  
• CHECKS & STRIPES  
• DENIM



**AT953C**  
• CONTRAST WAISTBAND  
• FOLD OVER WAIST TO  
COVER TIES  
• WRAP AROUND WAIST  
• SIDE LOOP FOR DISH TOWEL  
• ONE SIDE POCKET  
• FRONT SLIT  
• 86CM (LENGTH)  
• 96CM (WIDTH AT WAIST)  
• 66CM (WIDTH AT HEM)  
• MITRED BACK IE. TAPERED  
FROM TOP TO BOTTOM

**AT1076** - HALF APRON  
WITH PIPED POCKET

## CHEFS HALF APRON

**AT1071**  
• FRONT SLIT  
• V-SHAPED POCKET  
• TIES TO BACK  
OR FRONT  
• 77CM IN LENGTH  
• MITRED BACK IE.  
TAPERED FROM TOP  
TO BOTTOM



**AT509** - 93cm Long  
WAITERS WRAP APRON WITH  
REAR MITRED CORNERS

**AT509B** - 79cm Long  
• ALL COLOURS

**AT1048**  
HALF APRON WITH FRONT  
TIES AND A CONTRAST POCKET  
63W X 80Lcm  
• ALL COLOURS



**AT1049**  
WAITERS HALF APRON WITH  
CONTRASTING STITCHING,  
2 PEN SLOTS, OFF-CENTRE POCKET  
& FRONT TIES  
• ALL COLOURS

**CUSTOM HALF APRON**  
WE CAN DESIGN ANY  
APRON YOU REQUIRE  
• ALL COLOURS & DESIGNS



**AT953**  
FOLD OVER WAITERS APRON,  
FRONT SPLIT, SIDE POCKET,  
FRONT TIES & CLOTH LOOP  
96W X 89Lcm





## FULL APRONS



**AXT09**  
FULL FRONT BIB APRON  
WITH ROUND POCKET  
& NECK ADJUSTER  
• ALL COLOURS  
• STOCK EP9 WHITE  
• STOCK EP9 BLACK  
• STRIPES OR CHECKS  
• DENIM



**AXFWAPRON PVC**  
FULL FRONT  
70W X 110Hcm  
• WHITE



### CHEFS FULL APRON

**AT919**  
EXECUTIVE BIB APRON  
LARGER 85X106cm,  
WITH FRONT POCKET  
& ADJUSTABLE  
NECK STRAP  
85W X 106Lcm  
• ALL COLOURS



**AT919B - DENIM**  
EXECUTIVE BIB APRON  
LARGER 85X106cm,  
WITH FRONT POCKET  
& ADJUSTABLE  
NECK STRAP  
85W X 106Lcm



**EC41A**  
TUXEDO APRON WITH  
FRONT POCKET  
• ALL COLOURS



**AT1050**  
FULL FRONT BIB APRON  
WITH CONTRAST WIDE  
POCKET & TOP METAL  
HORIZONTAL ZIP DETAIL  
• ALL COLOURS



**AT1022**  
SOMMELIER ROUND  
NECK APRON  
• ALL COLOURS



**CUSTOM FULL APRON**  
FULL APRON  
WE CAN DESIGN ANY  
APRON YOU REQUIRE  
• ALL COLOURS  
• ALL DESIGNS  
• ALL FABRICS



## HEADWEAR



**EP6** - STOCK - BLACK AND WHITE 7,5 X 18CM  
WITH COVERED VELCRO AND TOP PIPING



**AXTO6** - ALL COLOURS / CHECKS & STRIPES  
7,5 X 18CM WITH COVERED VELCRO AND TOP PIPING



**EC6D** - CLOSED COVERED REAR ELASTIC  
10 X 18CM WITH TOP PIPING



**EC6E** - OPEN COVERED REAR ELASTIC  
10 X 18CM WITH TOP PIPING



**EC6** - ELASTIC CLOSER, NO PIPING  
10 X 18CM

**EC6A** - ELASTIC CLOSER, NO PIPING  
12 X 18CM



**EC6B** - ELASTIC CLOSER  
10 X 18CM WITH TOP PIPING



**EC44** - CHEFS BEANIE WITH V BACK AND COVERED VELCRO ADJUSTER  
• ALL COLOURS • STRIPES AND CHECKS • OPTIONAL CONTRAST CROWN SECTION



**AXCY5PANEL** - 5 PANEL FLAT FRONT CAP  
• MOST COLOURS



**AXCYCLASSIC6** - CLASSIC 6 PANEL BASEBALL CAP  
• MOST COLOURS



**AXTOTORCHON**  
CHEFS PADDED COTTON SERVING CLOTH



**AXT05** - CHEFS HAT  
WITH VELCRO ADJUSTER  
• ALL COLOURS



**EC21** - BANDANNA WITH PANELS  
• ALL COLOURS



**AXT07** - BANDANNA OR DOEK, TRIANGULAR, 100 X 70 X 70cm  
• ALL COLOURS • STOCK EP7 WHITE • STOCK EP7 BLACK



**AXKVBC-S**  
CHEF SKULL CAP MESH SIDES  
• MOST COLOURS  
(Black, White, Red, Lime)



**EC47** - SUSHI BOAT  
STYLE BEANIE WITH  
PIPING DETAIL



## SHOES AND CLOGS

NO EXCHANGE OR RETURNS  
ON CORRECTLY SUPPLIED SIZES



\*excluding Bata  
MINIMUM ORDER OF 10 UNITS PER STYLE

UNISEX CHEFS CLOG LEATHER SLIPON LEMAITRE  
(Ladies order one size smaller than men)

- AYBN8008 - STC  
AYBN8007 - NSTC  
• Slip resistant sole



LADIES CHEF CLOG WHITE  
NSTC - MIN 20  
AYBTLDSMULE-W

MENS CHEF CLOG WHITE  
NSTC - MIN 20  
AYBTMNSMULE-W



**Bata**  
MINIMUM ORDER OF 20

UNISEX LEMAITRE  
GENERAL ALL PURPOSE SHOE

- AYBN8102 - STC  
AYBN8091 - NSTC  
• Slip resistant sole



LADIES CHEF CLOG BLACK  
NSTC - MIN 20  
AYBTLDSMULE-B

MENS CHEF CLOG BLACK  
NSTC - MIN 20  
AYBTMNSMULE-B



**Bata**  
MINIMUM ORDER OF 20

LADIES LEATHER LACE-UP SHOE,

- STC  
• NSTC  
AYSIS4001  
• Slip resistant sole



BISTRO WORK  
AYFFBISTRO



**crocs™**

Choose locally manufactured quality chefs and kitchen garments - choose **eChef**





Authorised  
reseller



PU Clogs  
10 unit minimum



function.

Birkis

[www.echef.co.za](http://www.echef.co.za)

t: 0861-4-32433

t: 0861-4-echef

[sales@echef.co.za](mailto:sales@echef.co.za)

## Our most popular - Super-Birki

made from Birki-foam, with replaceable footbed



Available in  
• Blue  
• Black

### Checklist „Super-Birki“

replaceable footbed:	✓
footbed washable at:	30°C
raised heel:	✓
washable at*:	60°C
chemical resistant**:	✓
grease resistant:	✓
oil resistant:	✓
TUV-tested:	✓



Cork replacement  
footbed  
washable at 30°C  
acrylic fabric beige/coloured  
size 26 – 48

Ideal for the most  
demanding tasks

## Profi-Birki

made from Birki-foam, with replaceable footbed



Available in  
• Black

### Checklist „Profi-Birki“

replaceable footbed:	✓
footbed washable at:	30°C
raised heel:	✓
slip-resistant sole:	✓
extra deep sole profile:	✓
washable at*:	60°C
chemical resistant**:	✓
grease resistant:	✓
oil resistant:	✓
TUV-tested:	✓



PU replacement  
footbed  
washable at 30°C  
fleece black  
size 35 – 48



**DISTINCTIVE PROFILE**  
• resistant to grease, oil and lye  
• 2,5 mm deep abrasive profile



**RAISED HEEL AREA**  
• prevents involuntary slipping out of the clog  
• for safe standing on slippery ground



Birkenstock size conversion - order in Euro sizing		
Measurement (mm)	Eur	UK
150	24	7
160	25	8
165	26	8.5
170	27	9
180	28	10
185	29	11
190	30	11.5
200	31	13
205	32	13.5
210	33	1
220	34	2
225	35	2.5
230	36	3.5
240	37	4.5
245	38	5
250	39	5.5
260	40	7
265	41	7.5
270	42	8
280	43	9
285	44	9.5
290	45	10.5
300	46	11.5
305	47	12
310	48	13
320	49	14
325	50	14.5

REGULAR WIDTH		
Adult Sizes	Footbed Length	Footbed Width
35 Regular	225mm	89mm
36 Regular	230mm	91mm
37 Regular	240mm	93mm
38 Regular	245mm	95mm
39 Regular	250mm	97mm
40 Regular	260mm	99mm
41 Regular	265mm	101mm
42 Regular	270mm	102mm
43 Regular	280mm	103mm
44 Regular	285mm	107mm
45 Regular	290mm	109mm
46 Regular	295mm	113mm
47 Regular	305mm	115mm
48 Regular	310mm	117mm
49 Regular	315mm	119mm
50 Regular	325mm	121mm

NARROW WIDTH		
Adult Sizes	Footbed Length	Footbed Width
35 Narrow	225mm	85mm
36 Narrow	230mm	87mm
37 Narrow	240mm	89mm
38 Narrow	245mm	91mm
39 Narrow	250mm	93mm
40 Narrow	260mm	95mm
41 Narrow	265mm	97mm
42 Narrow	270mm	99mm
43 Narrow	280mm	101mm
44 Narrow	285mm	103mm
45 Narrow	290mm	105mm
46 Narrow	295mm	107mm
47 Narrow	305mm	109mm
48 Narrow	310mm	111mm
49 Narrow	315mm	113mm
50 Narrow	320mm	115mm

## BOSTON SUPER GRIP SOLE & BOSTON



from  
**R1390**

### BOSTON SL

Black | Natural leather  
35-48



Regular Fit Narrow Fit

Available in  
• Black

## TOKIO SUPER GRIP SOLE



### TOKIO SL

Black | Natural leather  
35-48



Regular Fit Narrow Fit

Available in  
• Black

## BOSTON ESD SOFT FOOTBED



### BOSTON ESD

Black | Natural leather  
36-42  
39-48



Regular Fit Narrow Fit

Available in  
• Black

6 month quality guarantee on workmanship ("walk-in" replacement) / Ex-stock (If the item is not in stock then delivery is usually 3/6 months) / Excludes delivery cost





## NAPKINS & TABLECLOTHS

200gm polycotton twill or 220gm cotton twill



**AXTONP30C**

30 X 30cm NAPKINS

- ALL COLOURS



**AXTONP40C**

40 X 40cm NAPKINS

- ALL COLOURS



**AXTONP50C**

50 X 50cm NAPKINS

- ALL COLOURS



**AXTOOL90C**

90 X 90cm OVERLAYS

- ALL COLOURS



**AXTOTC143C**

43 X 143cm TABLECLOTH

- RECTANGULAR
- ALL COLOURS



**AXTOTC200C**

143 X 200cm TABLECLOTH

- RECTANGULAR
- ALL COLOURS



**AXTOTC250C**

143 X 250cm TABLECLOTH

- RECTANGULAR
- ALL COLOURS



**AXTOTC300C**

143 X 300cm TABLECLOTH

- RECTANGULAR
- ALL COLOURS



**AXTOTC350C**

143 X 350cm TABLECLOTH

- RECTANGULAR
- ALL COLOURS



**AXTOTC400C**

143 X 400cm TABLECLOTH

- RECTANGULAR
- ALL COLOURS

Choose locally manufactured quality chefs and kitchen garments - choose

