



Shop online now & receive free delivery within SA for all orders of R3500+



TECHNICAL FABRIC

- antisticking quick dry
- UV protection
- easy care with shape retention
- cool and colour fast



120gm POLYCOTTON SHIRTING - Easy care and cool



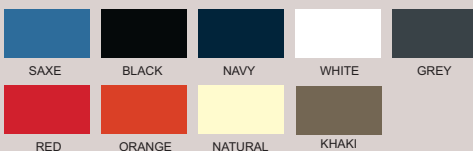
145gm 100% COTTON TWILL - Pre shrunk, light and cool cotton



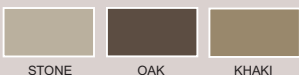
220gm 100% COTTON TWILL



220Egm 100% COTTON TWILL



235g 100 % BRUSHED COTTON TWILL - SABS quality approved



160gm POLYCOTTON TWILL - lighter and durable



200Egm POLYCOTTON TWILL



210gm POLYCOTTON TWILL



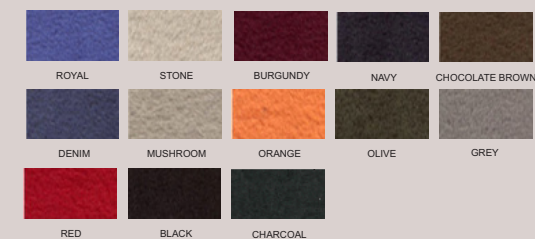
CHECKS & STRIPES POLYCOTTON TWILL



POLAR FLEECE MICRO 200gm, anti pill, technical

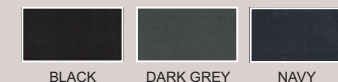


POLAR FLEECE NORMAL - 250gm, anti pill



SOFTSHELL

- breathable
- waterproof
- mens and ladies jackets
- bonded with fleece inner



MICRO SOFTSHELL

- water repellent
- micro polyester
- mens and ladies jackets
- bonded with single jersey

Bonded with white single jersey



Bonded with black single jersey



Please request an actual sample garment to confirm your sizing before placing your order as the information below is only a guideline. No returns if garments are supplied as per your order.

General Metric Conversion Table

INCHES:	28	30	32	34	36	38	40	42	44	46	48
CMS:	71	76	81	87	92	97	102	107	112	117	122

Men's Lounge Shirts

Measure under your arms, around your back and around the top part of your chest with your arms at your sides

ORDER:	32	34	36	38	40	42	44	46	48	50	52	54
Metric Size:	81	87	92	97	102	107	112	117	122	127	132	137
Approx S, M, L:	S	S	S	M	M	L	L	XL	2XL	3XL	4XL	5XL

Unisex Tunics & Men's Bush Shirts - cut on the larger size

Measure under your arms, around your back and around the top part of your chest with your arms at your sides

ORDER:	XS	S	M	L	XL	2XL	3XL	4XL
Inch Size:	30-32	34-36	38-40	42-44	46-48	50-52	54-56	58-60

Men's Trousers and Shorts - measure around your waist

ORDER:	28	30	32	34	36	38	40	42	44	46	48
Metric Size:	71	76	81	87	92	97	102	107	112	117	122

Ladies Polar Fleece Top 1008 / Soft Shell Jacket 1059

ORDER:	XS	S	M	L	XL	2XL	3XL
Inch Size:	30	32-34	36-38	40	42	44	46

Unisex polar Fleece Tops 283

ORDER:	S	M	L	XL	2XL	3XL	4XL	5XL
Inch Size:	34-36	38-40	42-44	46-48	50-52	54	56	58

Overalls—conti suits are ordered by chest measurement

- our suggestion is to order 1 size bigger than chest measurement to allow for movement and clothing to be worn under the suits
- conti pants in the set are 2 sizes smaller per industry norm - see below
- above based on a slim body type, larger body types to order 2 sizes bigger
- please order a sizing set before placing your order as there are no returns on conti suits correctly supplied

Conti suit sets

ORDER Top Size:	32	34	36	38	40	42	44	46	48	50
Pants - elasticated:	28	30	32	34	36	38	40	42	44	46

When ordering conti pants only

Please order 1 size you need to confirm the general sizing as there are no returns on conti pants correctly supplied

Your waist size:	28	30	32	34	36	38	40	42	44	46	48
Pants relaxed:	26	28	30	32	34	36	38	40	42	44	46
Pants full stretched:	36	38	40	42	44	46	48	50	52	54	56

Ladies Size Chart for Shirts and Tops

Measure under your arms, around your back and around the largest part of your bust with your arms at your sides

ORDER:	28	30	32	34	36	38	40	42	44	46
Metric Size:	72	77	82	87	92	97	102	107	112	117
Approx S, M, L:	XS	S	S	M	M	L	XL	2XL	3XL	4XL

Ladies pants and skirts

Measure around your hips 2 fingers above where the trouser lower waistband would sit

ORDER:	28	30	32	34	36	38	40	42	44	46	48	50	52	54
Metric Size:	72	77	82	87	92	97	102	107	112	117	122	127	132	137

Chefs Double Breasted Jackets

Order:	32	34	36	38	40	42	44	46	48	50	52	54
Metric Size:	81	87	92	97	102	107	112	117	122	127	132	137
Half Chest:	46	49	52	55	58	61	63	67	70	72	74	77
Approx Alpha Size:			S		M		L	XL	2XL	3XL	4XL	5XL

Chef Flap Shirts

Metric Size:	92-97	102-107	112	117-122	127-132	137-142	147	152
Inch Size:	36-38	40-42	44	46-48	50-52	54-56	58	60
Half Chest:	56	58	61	67	72	78	82	87
Order:	S	M	L	XL	2XL	3XL	4XL	5XL

Chef Elasticated Trousers

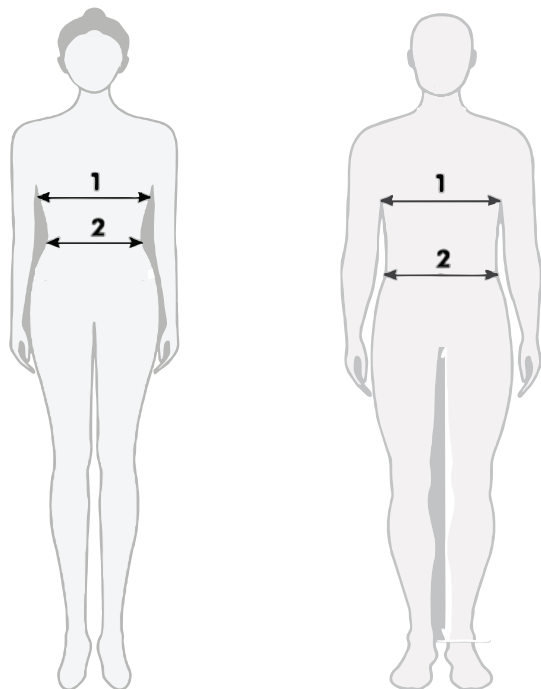
Inch Size:	26-28	30-32	34-36	38-40	42-44	46-48	50-52	52-54
Metric Size:	66-71	76-81	87-92	97-102	107-112	117-122	127-132	132-137
Order:	S	M	L	XL	2XL	3XL	4XL	5XL

1 - LADIES BUST: Measure at the fullest part of your bust, by placing the tape measure under your arms and across your shoulder blades. Remember to breathe out when taking this measurement.

2 - LADIES WAIST: Measure your waist around the natural waistline.

1 - MENS CHEST: Measure across the widest part of the chest, under the armpits, and around the back. Ensure that the tape is horizontal all the way around the body. (Do not allow it to dip at the back).

2 - MENS WAIST: Decide where you want your trousers to sit (on the hips, above the hips) and measure at this position. Ensure that the tape is horizontal to the ground



COTTON GARMENT WASH CARE

- Cold water wash
- Do not tumble dry
- Garments must be rinsed thoroughly - modern washing powder contains optical bleach which, when poorly rinsed, reacts with the sun to bleach the fabric
- Perspiration will bleach the colour from cotton garments
- Allow up to 5% shrinkage
- Cotton fabric and colour is unfortunately not guaranteed due to the varying wash care and working conditions per client

WASHING AND GARMENT CARE INFORMATION

- Cold water wash
- Do not tumble dry.
- Garments must be rinsed thoroughly
- Cool iron must be used on all fabrics except nylons and polar fleece materials (No Ironing)
- Do not iron on the screenprints or the embroideries
- Do not use bleach as this will weaken the fibres

WASHCARE GUIDELINES - HOW TO INCREASE YOUR WARDROBE LIFE SPAN:

Washing:

- Avoid harsh bar soaps and bleaches as they cause discolouring
- Use very little fabric softener as this tends to weaken fibres

How to reduce creasing:

- Hang up garment after wearing. Fasten zips and buttons to help the garment keep its shape
- Jackets should be placed on a hanger when not being worn
- Hang washable garments on hanger whilst damp and minor creases should drop out
- When ironing is required, iron on the reverse side to prevent "shining"

Drying:

- Fasten all buttons & hang inside out, especially dark colours
- If garments are left out in the sun all day they will be bleached by the sun

Stain removal:

- Always carefully remove stains before washing or drying as heat can make stains permanent

TREATING STAINS:

Antiperspirant: Make a paste with bicarbonate of soda and salt and

apply to stain for about 15 minutes. Soak in detergent and then wash as normal.

Ball Point Pen: Sponge with methylated spirits or Eau-de-Cologne. Any remaining stain should then be rubbed with soap and washed as normal.

Alcohol or Food: Use soda water. Place a towel under area. Fizz soda and rub in towards the centre of the spot.

Blood: Mop with tissues & soak in strongly salted cold water. Keep changing the salt-water solution until it runs clear. Sponge any remaining stain with warm water. Rinse with cold water. Wash the whole garment before the stain dries using a detergent.

Chewing Gum: Put the stained garment in a plastic bag and freeze overnight. Gum should scrape off easily, or brush egg white onto gum stains with a toothbrush and wash normally.

Coffee and Tea: Soak in lukewarm detergent solution. (Always dissolve the detergent in water soaking). Then treat with methylated spirits.

Fruit and Fruit Juices: Rub the stain with salt before washing. Rinse in cold water and soak in liquid detergent. (See care label)

Oil: Eucalyptus oil is an excellent oil and grease stain remover (from pharmacy). Using a cotton swab, apply to stained area and then wash as per the care instructions.

Tomato Sauce: Rinse in cold water and soak in liquid detergent. If necessary, treat with methylated spirits.

HAND WASHING:

- Fill a bucket or deep sink with warm water and about a ¼ cup of detergent
- Put your clothing in the water and leave to soak for a while if stained
- Knead the clothing with your hands in the water for a few minutes, as much as you would knead bread
- Rinse the clothing until water runs clear, not soapy
- Wring out the garment gently
- Turn garments inside out and close any buttons' or zips
- Hang out to dry on a clothes line or a well-ventilated area

STOCK - 2 WEEKS DELIVERY

OUR FULL STOCK RANGE 'AS' CODED IS AVAILABLE ON A 2 WEEK DELIVERY WITH EMBROIDERY



Shop online now & receive free delivery within SA for all orders of R3500+

**WOW!!!
2 weeks
GREAT...**



2 week delivery is ex-factory and stock dependent at the time of placing your order and is valid for all approved current logos. Please add a week for new logos

LADIES TECHNICAL - STONE, OLIVE & CHARCOAL



LADIES BUSH SHIRT SHAPED
WITH FLAP POCKETS
Size: Ladies 30 - 42

AS150F - from R301.00
SHORT SLEEVES



AS150G - from R333.00
LONG SLEEVES WITH ROLLUP SLEEVE TAB



MENS TECHNICAL - STONE, OLIVE & CHARCOAL



MENS BUSH SHIRT
WITH FLAP POCKETS
Size: S - 3XL

As047 - from R370.00
SHORT SLEEVES



As044 - from R433.00
LONG SLEEVES WITH ROLLUP SLEEVE TAB

OLIVE ONLY



REAR VENT

AS880LS - from R458.00
VENTED LONG SLEEVE - OLIVE ONLY



SWING TICKET



"CLASSIC ORIGINALS"
MENS BUSH SHIRT
KHAKI ONLY
235g COTTON TWILL
Size: S - 3XL



AS044-235 - from R363.00

LONG SLEEVES WITH ROLLUP STEVE TAB



AS047-235 - from R314.00

SHORT SLEEVES

STONE KHAKI OAK



AS857-235 - from R299.00

'CLASSIC ORIGINALS'
MENS FLAT FRONT CHINOS

- Premier brand at wholesale pricing
 - Washed & brushed 100% cotton twill
 - Back jet pocket
 - YKK Zipper
 - SABS quality fabric
- Size: Men 30 - 44

SHORTS - 3 WEEK DISPATCH

AS856-235 - 'CLASSIC ORIGINALS' MENS FLAT

FRONT CARGO OR CHINO SHORTS

CHINO

CARGO



AS856CH - INNER LEG 21cm
from R317.00

CHINO



AS856CC - INNER LEG 21cm
from R369.00

CARGO



AS856BE - INNER LEG 26cm
from R317.00



AS856BC - INNER LEG 26cm
from R369.00

Shading may occur within stock garment orders due to varying fabric batches

MENS

LADIES



SOFTSHELL JACKET WITH POCKETS - GREY

AS1058G - MENS - from R483.00

AS1059G - LADIES - from R445.00

Size: S - 2XL



ASTMPLIO - ADULTS LINED PONCHO

DURABLE - HEAVY RUBBERISED

AND POLAR FLEECE LINED

1,2M LONG - from R680.00

Fabric: Nylon - Size: OSFA



Supplied
in a bag

ASTMPONC - ADULTS PONCHO - DURABLE

RUBBERISED AND WATERPROOF,

CHOCOLATE, 89L X 140W - from R239.00

Fabric: Nylon - Size: OSFA

ASTMPONO - OLIVE - from R239.00

KIDS



Supplied
in a bag

Pic of 6 year
old Luke

ASTMKIDPONO - KIDS PONCHO

RUBBERISED AND WATERPROOF,

OLIVE, 69L X 78W - from R209.00

Fabric: Nylon - Size: OSFA



AS1069G - JACKET WR WARM

**QUILTED PADDED LINING
AND FOLD-IN HOOD**

BOTTLE GREEN - from R571.00

Fabric: Oxford Nylon WP



AS780 - UNISEX TUNIC

**STONE AND BLACK SHIRT SS
SERVICE STAFF** - from R271.00

Fabric: 210G Polycotton Twill

Size: XS - 3XL



**EP11 - BLACK - UNISEX
BLACK ELASTICATED PANTS
WITH PKTS** - from R193.80

Fabric: Polycotton Twill

Size: S - 5XL



**AS747B - LADIES STONE
MID RISE FLAT FRONT
TROUSERS** from R308.00

Fabric: 210G Polycotton Twill

Size: Ladies 28 - 48



**UNISEX POLAR FLEECE
TOP WITH POCKETS**
AS283CM - CHOCOLATE / MUSHROOM
AS283OS - OLIVE / STONE
- from R310.00
Fabric: Normal Polar Fleece
Size: XS - 3XL



**LADIES PF TOP, RAGLAN
SLV, PKTS, INNER COLLAR**
AS1008CM - CHOCOLATE / MUSHROOM
AS1008ST - STONE
- from R302.00
Fabric: Normal Polar Fleece
Size: S - 2XL



**UNISEX POLAR FLEECE
TOP - NO POCKETS**
AS283AB - BLACK
from R256.00
Fabric: Normal Polar Fleece
Size: XS - 3XL



**UNISEX SLEEVELESS
POLAR FLEECE TOP WITH PKTS**
AS283CCM - CHOCOLATE / MUSHROOM
- from - R292.00
Fabric: Polar Fleece Normal
Size: S - 2XL



**SHERPA FLEECE UNISEX
SLEEVELESS TOP**
AS283CSH - CHOCOLATE / STONE
from R299.00
Size: S - 2XL



EP7 - BANDANNA OR DOEK, TRIANGULAR
100 X 70 X 70cm

- BLACK
- WHITE

EP11
UNISEX ELASTICATED PANTS WITH 3 POCKETS & DRAWCORD

- BLACK
- BLUE CHECK



EP8 - HALF APRON WITH RECTANGULAR POCKET
98W X 77Lcm

- BLACK
- WHITE

EP9 - BIB APRON WITH NECK ADJUSTER AND ROUNDED POCKET
72W X 86Lcm

- BLACK
- WHITE

EP9 - FULL BUTCHERS APRON WITH NECK ADJUSTER AND ROUNDED POCKET
72W X 86Lcm

- BLUE & WHITE STRIPES



EP6
CHEFS BEANIE WITH TONAL TOPPIPING AND HIDDEN VELCRO CLOSER
7,5H X 18Dcm

- BLACK
- WHITE



ES2BBW
EXECUTIVE



ES2BWB
EXECUTIVE



EP17 - BLACK
FLAP SHIRT



EP17 - WHITE
FLAP SHIRT

EP1 - WHITE
D/BREADED L/S

ES2B
EXECUTIVE CHEFS JACKET WITH PIPING, FRENCH CUFFS & UNDERARM EYELETS
ES2BWB - WHITE WITH BLACK PIPING
ES2BBW - BLACK WITH WHITE PIPING

EP17
CHEFS FLAP SHIRT WITH PRESS STUDS & SHORT SLEEVES

- WHITE
- BLACK

EP1
CHEFS JACKET, BASIC D/BREADED WITH WHITE POPPERS, LONG SLEEVES

- WHITE



AT780 - UNISEX TUNIC SS
- from R225.00



AT966B - MENS SS V NECKLINE TUNIC
- from R225.00



AT801 - UNISEX TUNIC SS
- from R192.00



AT155 - UNISEX V-NECK TUNIC SS
- from R236.00



AT780E - UNISEX TUNIC SS WITH PIPING & SLEEVE TRIM
- from R250.00



AT780C - UNISEX TUNIC SS WITH SHWESHE NECK & SLEEVE TRIM - from R283.00



AS857-235 - STOCK 'CLASSIC ORIGINALS' MENS FLAT FRONT CHINOS - STONE, KHAKI & OAK - from R299.00



EP11 - BLACK - UNISEX ELASTICATED PANTS WITH PKTS & DRAWCORD - from R193.00



AXCM-TG1-460 - MENS SERVICE STAFF POLY TROUSERS - from R295.00



AXTO33 - BAR APRON - FRONT POCKET - from R64.00



AT159B - MENS MANDARIN COLLAR BUTTON SHIRT SS
OPT PKTS AND TRIM - from R290.00



AT1004SS - MENS MANDARIN OPEN COLLAR SHIRT SS WITH COVERED BUTTONSTAND - from R297.00



AS283AB - STOCK UNISEX PF TOP, NO POCKETS BLACK - from R256.00

Manufactured to your colour and trim detail - wide choice of fabric types and weights. 5 - 6 week delivery • Shading may occur within stock garment orders due to varying fabric batches • See Stock Catalogue for immediate delivery • Rise per size • Excl VAT & Freight • T's & C's Apply



**AT1063SS - LADIES OPEN
MANDARIN COLLAR SHIRT SS
COVERED BUTTON STAND - from R294.00**



**AT1047 - LADIES
3/4 SLEEVE SHIRT, 1/4 BUTTONSTAND
- from R265.00**



**AT159 - LADIES OPEN NECK
SHIRT SS OPT PKTS AND TRIM
- from R284.00**

**AT780C - UNISEX TUNIC SS
WITH SHWESHE NECK &
SLEEVE TRIM - from R283.00**



**AT781 - UNISEX NECK
DETAIL SERVICE STAFF
SHIRT SS - from R342.00**



**AT966 - LADIES SS V NECKLINE
SERVICE TUNIC - from R218.00**



**AT1067 - LADIES ROUNDED
NECK SS SHAPED - from R261.00**



**AXTDOEK - CORE
HOUSEKEEPING DOEK
- from R49.00**



**AXTOSMS - LADIES SMOCK
STANDARD - 106CM FROM
NECK TO SEAM - from R199.00**

**AS283AB - STOCK -
UNISEX PF TOP, NO POCKETS
BLACK - from R256.00**



**AXCM-TW6-460
LADIES FORMAL MIDRISE
BOOTLEG PANTS - from R240.00**



**AT987 - LADIES
ELASTICATED
PANTS - from R189.00**



**AT070 - LADIES PLAIN
WRAP SKIRT, 1
PANEL - from R173.00**



**AXTO40 - LADIES HALF
ELASTICATED SKIRT WITH
BUTTON & ZIP - from R197.00**



**AT064B - LADIES
COMFORTABLE SKIRT -
- from R202.00**



**AXTOTAB - STANDARD TABARD
CONTRAST BINDING
- from R144.00**

Manufactured to your colour and trim detail - wide choice of fabric types and weights. 5 - 6 week delivery • Shading may occur within stock garment orders due to varying fabric batches • See Stock Catalogue for immediate delivery • Rise per size • Excl VAT & Freight • T's & C's Apply



**AT370LSV - MENS VENTED
HOSTING SHIRT LS**
- from R397.00



**AT370SBV - MENS VENTED
BUSH SHIRT**
LS - from R397.00 SS- from R379.00



**AS044-TEC - STOCK - RANGERS BUSH
SHIRT WITH ROLL UP TABS LS**
OLIVE, STONE OR CHOC - from R433.00



**AS047-TEC - STOCK
RANGERS BUSH SHIRT SS**
OLIVE, STONE OR CHOC - from R370.00



**AXKVLO-PLA-LS - POLYCOTTON
CLASSIC LOUNGE SHIRT**
LS - from R249.00 - SS - from R240.00



**AT1037 - POLYCOTTON
SLIM FIT LOUNGE SHIRT**
LS - from R354.00



AT283 | AS283
UNISEX POLAR FLEECE
WITH POCKETS - from R322.00



**AT1058 - MENS SOFT SHELL
JACKET WITH POCKETS**
- from R483.00



**AT397 - MENS SLEEVELESS RIGID
PUFFER JACKET** - from R469.00



**AT397B - MENS SLEEVELESS
PUFFER JACKET WITH DIAMOND
STITCHING** - from R444.00



**AS857-235 - STOCK
'CLASSIC ORIGINALS'
MENS FLAT FRONT CHINOS**
• Premier brand at
wholesale pricing
• Washed & brushed 100%
cotton twill
• Back jet pocket
• YKK Zipper
• SABS quality fabric
Size: Men 30 - 44
- from R299-3.00



**AT751CHI - MENS FRONT
PLEATED CHINOS** - from R348.00

Manufactured to your colour and trim detail - wide choice of fabric types and weights. 5 - 6 week delivery • Shading may occur within stock garment orders due to varying fabric batches • See Stock Catalogue for immediate delivery • Rise per size • Excl VAT & Freight • T's & C's Apply

AS150F-TECH - STOCK - LADIES
BUSH SHIRT SHAPED WITH FLAP PKTS
SS, STONE, OLIVE & CHOCOLATE
- from R301.00



AT990B - LADIES BUTTON DOWN DRESS
WITH SELF FABRIC WAIST BELT - from R482.00
AT990 - LADIES BUTTON DOWN DRESS
WITH SELF FABRIC WAIST BELT
& PKTS - from R562.00



AT150C - LADIES CLASSIC
SHAPED SHIRT 3/4 SLEEVE
from R275.00



AT965 - LADIES
CAP SLEEVE SHIRT WITH
POCKET - from R347.00



AT150B - LDS CLASSIC
SHAPED SS SHIRT
from R261.00

AT150 - LDS CLASSIC
SHAPED LS SHIRT WITH SLEEVE
TAB - from R282.00

AT1047 - LADIES
3/4 SLEEVE SHIRT
1/4 BUTTONSTAND - from R265.00

AT820 - LADIES 3/4 SLEEVE
SHIRT WITH ROLLUP
SLEEVE - from R387.00



AT1059 - LADIES SOFT SHELL
JACKET WITH POCKETS
- from R445.00

AT737B - LADIES L/LENGTH
QUILTED S/LESS JACKET
- from R452.00

AS1008 - STOCK - LADIES
PF TOP, RAGLAN SLEEVE, PKTS,
CHOC/MUSH & STONE - from R302.00

AT772A - LADIES
ALINE 70CM KNEE
SKIRT - from R164.00

AT066H - LADIES
MANAGEMENT SKIRT
FRONT ZIP, KNEE LENGTH
54CM - from R292.00

AXCM-KW1-460
LADIES CORE SKIRT,
64CM UNLINED
POLYESTER - from R190.00

AXCM-TWH-460 - LADIES
LOW RISE STRAIGHT LEG
PANTS - from R240.00

AT1026 - LADIES
LOW RISE FLAT
FRONT TROUSERS
- from R266.00

AT747 - LADIES CARGO
MIDRISE FLAT
FRONT PANTS
- from R366.00

Manufactured to your colour and trim detail - wide choice of fabric types and weights. 5 - 6 week delivery • Shading may occur within stock garment orders due to varying fabric batches • See Stock Catalogue for immediate delivery • Rise per size • Excl VAT & Freight • T's & C's Apply



AT1004LS - MENS MANDARIN
OPEN NECK COLLAR, COVERED
BUTTONSTAND SHIRT
LS - from R354.00 - SS - from R297.00

AT131B - MENS MANDARIN
COLLAR SHIRT SS WITH COVERED
BUTTONSTAND - R312.00



AT371B - MENS MANDARIN
COLLAR SHIRT
LS - from R339.00

AT371 - MENS MANDARIN
COLLAR SS SHIRT
- from R307.00



AT131 - MENS MANDARIN
COLLAR SHIRT LS OPT
PKT AND TRIM - from R354.00

AT159B - MENS MANDARIN
COLLAR SS SHIRT WITH OPT PKTS
& TRIM - from R290.00



AT870 - UNISEX
WAISTCOAT FULLY LINED
- from R329.00



AXKVLO-PLA-LS - MENS
CLASSIC LOUNGE SHIRT
LS - from R249.00
SS - from R240.00



AT1037 - MENS SLIM
FIT LOUNGE SHIRT
LS - from R354.00



AXCM-TG1-460 - MENS
SERVICE STAFF POLY
TROUSERS - from R295.00



AS857-235 - STOCK
'CLASSIC ORIGINALS' MENS
FLAT FRONT CHINOS, OLIVE,
STONE & OAK - from R299.00



EC41A - V-NECK
TUXEDO APRON
from R218.00



AT1048 - BISTRO
CONTRAST HALF APRON
from R110.00



EC9A-B - FULL APRON
WITH SQUARE PIPED
POCKET - from R153.00



AT1076 - HALF APRON
WITH PIPED POCKET
from R163.00

Manufactured to your colour and trim detail - wide choice of fabric types and weights. 5 - 6 week delivery • Shading may occur within stock garment orders due to varying fabric batches • See Stock Catalogue for immediate delivery • Rise per size • Excl VAT & Freight • T's & C's Apply



AT964

LADIES SPA TOP - from R340.00

AT788 - LADIES SPA TOP SS BACK
PLEAT & BUTTON DETAIL
- from R294.00



AXDCNIT2M

LADIES SPA TOP - from R314.00

AT966 - LADIES SS V NECKLINE
TUNIC - from R218.00



AT962 - LADIES ROUND NECK
REAR ZIPTUNIC
- from R268.00



AXCM-TW5-460

LADIES MIDRISE CAPRI PANTS
POLYESTER - from R221.00



AXCM-TW6-460

- LADIES FORMAL MIDRISE
BOOTLEG PANTS POLYESTER
- from R240.00



AT985 - SPA TABARD - LONGER
LENGTH WITH TWO FRONT
SIDE POCKETS AND SIDE TIES
- from R197.00



AT833B - SPA TABARD - LONGER
LENGTH, SIDE BUTTON CLOSURES
FULL FRONT DOUBLE PKT - from R266.00



AT014 - LADIES
DRAWSTRING CAPRI
PANTS - from R244.00



AT987B - LADIES 3/4
COMFORT PULL ON PANTS
POLYESTER - from R193.00

Manufactured to your colour and trim detail - wide choice of fabric types and weights. 5 - 6 week delivery • Shading may occur within stock garment orders due to varying fabric batches • See Stock Catalogue for immediate delivery • Rise per size • Excl VAT & Freight • T's & C's Apply



AT1063LS - LADIES OPEN
MANDARIN COLLAR SHIRT LS
COVERED B/S - from R334.00



AT1063SS - LADIES OPEN
MANDARIN COLLAR SHIRT SS
COVERED B/S - from R294.00



AT729B - LADIES BUTTONUP MANDARIN
COLLAR SHIRT SS - from R360.00



AT1073 - LADIES LS
SHIRT SHAPED MANDARIN
NECKLINE - from R262.00



AT159E - LADIES MANDARIN
COLLAR BUTTONUP SHIRT, LS COVERED
B/S OPT PKTS & TRIM - from R414.00



AT159D - LADIES MANDARIN COLLAR
BUTTONUP SHIRT SS
OPT PKTS AND TRIM - from R307.00



EC33A - BAR APRON WITH
POCKET AND OPTIONAL
STRIPES - from R121.00



AXCM-TW6-460
LADIES FORMAL MIDRISE
BOOTLEG PANTS - from R240.00



AT150 - LDS CLASSIC
SHAPED LS SHIRT WITH
SLV TAB - from R282.00



AT150B - LDS CLASSIC
SHAPED SS SHIRT
from R260.00



AT1047 - LADIES
3/4 SLEEVE SHIRT
1/4 B/S - from R265.00

Manufactured to your colour and trim detail - wide choice of fabric types and weights. 5 - 6 week delivery • Shading may occur within stock garment orders due to varying fabric batches • See Stock Catalogue for immediate delivery • Rise per size • Excl VAT & Freight • T's & C's Apply



AS047-235 - STOCK - HEAVY COTTON
'CLASSIC ORIGINALS'
BUSH SHIRT SS, KHAKI
- from R314.00



AS047-TECH - STOCK
RANGERS BUSH SHIRT SS
OLIVE, STONE OR CHOCOLATE
- from R370.00



AT971SS - MENS SS TECH
SHIRT WITH BACK VENT
from R420.00



AS283 | AT283 - UNISEX
POLAR FLEECE WITH POCKETS
As283 - from R310.00
At283 - from R322.00

AS044-235 - STOCK - HEAVY COTTON
'CLASSIC ORIGINALS' BUSH SHIRT WITH
WITH ROLL UP TABS LS, KHAKI
- from R363.00

AS044-TECH - STOCK - RANGERS BUSH
SHIRT WITH ROLL UP TABS LS
OLIVE, STONE OR CHOCOLATE
- from R433.00

AS880LS - MENS VENTED LONG SLEEVE
SHIRT - from R458.00

AT370LBV - MENS VENTED BUSH SHIRT
LS - from R397.00 SS - from R379.00



AT856CAR - MENS
FLAT FRONT CARGO
CHINO SHORTS - from R340.00



AXCY6PANWORK
- 6 PANEL DURABLE
WORKWEAR CAP - from R40.00



AXCYBUSHHAT
- BUSH HAT WITH SIDE STUDS,
SOFT WIDE BRIM AND NECK CORD
- from R92.00

AT001 - POLAR
FLEECE BEANIE
from R81.00



PARKA JACKET WITH PF
LINING & FOUR POCKETS
AT395-210 - from R1083.00
AT395-235 - from R1113.00

AS857CHI-235 - STOCK
MENS FLAT FRONT 'CLASSIC
ORIGINAL' CHINOS - STONE
KHAKI, OAK- from R299.00

AT857CHI
MENS FLAT FRONT
CHINOS
- from R345.00

AT857CAR - MENS
CARGO FLAT FRONT
TROUSERS - R396.00



AS150G - STOCK - LADIES BUSH
SHIRT SHAPED WITH FLAP
PKTS LS, STONE, OLIVE & CHOCOLATE
- from R333.00

AS150F - STOCK - LADIES BUSH
SHIRT SHAPED WITH FLAP
PKTS SS, STONE, OLIVE & CHOCOLATE
- from R301.00

AT307 - LADIES BUSH
SHIRT SHAPED SS - R375.00

AT735 - LADIES BUSH
SHIRT WITH A ROUNDED
COLLAR SS - R327.00

AT787 - LADIES BUSH SHIRT
WITH A ROUNDED COLLAR LS - from R397.00

AT1001 - LADIES
LONG SLEEVE SHIRT WITH
ROLL UP TAB - R389.00



AT747 - LADIES CARGO MIDRISE
FLAT FRONT TROUSERS - from R333.00

AT1026 - LADIES LOW RISE
FLAT FRONT TROUSERS - from R266.00

AT747E - LADIES CARGO MIDRISE
FLAT FRONT SHORTS - from R310.00

AT1059 - LADIES SOFT SHELL JACKET
WITH POCKETS - from R445.00

AS1008 - STOCK - LADIES POLAR FLEECE TOP
RAGLAN SLV - PKTS - CHOC/MUSH & STONE - from R302.00

Manufactured to your colour and trim detail - wide choice of fabric types and weights. 5 - 6 week delivery • Shading may occur within stock garment orders due to varying fabric batches • See Stock Catalogue for immediate delivery • Rise per size • Excl VAT & Freight • T's & C's Apply



AS1069G - STOCK - JACKET WATER
RESISTANT WARM QUILTED PADDED LINING &
FOLD-IN HOOD, BOTTLE GREEN - from R571.00



AS283 - STOCK - MENS PF TOP
WITH POCKETS - from R310.00



AXTOBLS - TRACKER BUSH
SHIRT GLADNECK LS - from R227.00



AXTOBSS - TRACKER BUSH
SHIRT GLADNECK SS - from R199.00



AXTOBLSE - TRACKER BUSH
SHIRT GLADNECK LS WITH
EPAULETTES - from R240.00



AXTOBSSE - TRACKER BUSH
SHIRT GLADNECK SS WITH
EPAULETTES - from R212.00

AXCY6PANWORK
- 6 PANEL DURABLE
WORKWEAR CAP - from R40.00



AT001
- POLAR FLEECE BEANIE - from R81.00



AXTOPANTCARG
- TRACKER CARGO PANTS
WITH FLY AND HALF
ELASTICATED - from R229.00

AXTOPAN
- TRACKER PANTS
WITH FLY AND HALF
ELASTICATED - from R209.00



AXTOSHO - TRACKER SHORTS
WITH FLY AND HALF ELASTICATED
- from R142.00



AXKVLAS175B
- MENS BASIC POLYCOTTON
GOLFER - from R114.00



AXTLC180 - COTTON 180G
TSHIRT - from R81.00



AXKVCS-BPC
2 PIECE CONTI SUIT
- from R212.00



AXTOBLSE - TRACKER BUSH
SHIRT GLADNECK LS WITH
EPAULETTES - from R240.00



AXTOBSSE - TRACKER BUSH
SHIRT GLADNECK SS WITH
EPAULETTES - from R212.00



AXTOBLS-DEN
DENIM SHIRT LS
- from R259.00



AXTOBSS-DEN
DENIM SHIRT SS
- from R231.00



AT1070 - WINDBREAKER
BASIC UNLINED WITH FOLD-IN
HOOD - from R317.00



AXTOBOIL
MENS ONE PIECE
OVERALL - from R347.00



AXTOPAN
PANTS WITH
FLY AND HALF
ELASTICATED - from R209.00



AXTOCOMFULL
MENS FULL COMBAT
SECURITY TROUSER
- from R240.00



AXTOCOMMOCK
MENS MOCK COMBAT
SECURITY TROUSERS
- from R209.00



AXCY6PANWORK
6 PANEL DURABLE
WORKWEAR CAP - from R40.00



AS1069G - JACKET WR WARM
QUILTED PADDED LINING AND FOLD-IN
HOOD - BOTTLE GREEN - from R571.00
Fabric: Oxford Nylon WP
Size: S - 3XL



AS1069G - STOCK
JACKET WATER RESISTANT WARM
QUILTED PADDED LINING & FOLD-IN
HOOD, BOTTLE GREEN - from R571.00



AXMSFJK - WINTER SECURITY
JACKET - from R634.00



AT396-0XN - PARKA JACKET
WITH TWO POCKETS
PF LINED - from R832.00



AT395-235 - PARKA JACKET
WITH PF LINING & FOUR
POCKETS - from R1113.00



AT750 - MANAGERS JACKET
- from R625.00



AT817 - MENS JACKET
WITH PF LINING & SLANT
POCKETS - from R640.00



AT1070 - WINDBREAKER BASIC
UNLINED WITH A FOLD-IN
HOOD - from R317.00



AT397 - MENS RIGID SLEEVELESS
PUFFER JACKET - from R469.00



AT1058 - MENS SOFTSHELL JACKET
WITH PKTS - from R483.00



AT1058C - MENS SOFTSHELL JACKET
ZIP-OFF SLVS WITH PKTS - from R554.00



AT1058B - MENS SOFTSHELL
JACKET SLEEVELESS WITH PKTS - from R405.00



AT163BA - MENS DELUXE SLEEVELESS
JACKET PF LINED - from R606.00

Manufactured to your colour and trim detail - wide choice of fabric types and weights. 5 - 6 week delivery • Shading may occur within stock garment orders due to varying fabric batches • See Stock Catalogue for immediate delivery • Rise per size • Excl VAT & Freight • T's & C's Apply



AT010 - LADIES BUSH STYLE JACKET -
from R569.00



AT737B - LADIES L/LENGTH QUILTED S/LESS
JACKET POLYLINE - from R495.00



AT502 - LADIES PADDED JACKET
- from R616.00



AT737C - LADIES QUILTED S/LESS
JACKET WITH SIDE PANELS - from R529.00



AT813 - LADIES CLASSIC JACKET WITH POLAR
FLEECE LINING - from R644.00



AT1059 - LADIES SOFT SHELL JACKET
WITH PKTS - from R445.00



AT1059C - LADIES SOFT SHELL JACKET
WITH ZIP-OFF SLEEVES AND PKTS - from R507.00



AT1059B - LADIES SOFT SHELL JACKET
SLEEVELESS WITH PKTS - from R382.00



AT1074 - LADIES FITTED RIGID PUFFER JACKET
WITH PKTS - from R458.00

Manufactured to your colour and trim detail - wide choice of fabric types and weights. 5 - 6 week delivery • Shading may occur within stock garment orders due to varying fabric batches • See Stock Catalogue for immediate delivery • Rise per size • Excl VAT & Freight • T's & C's Apply



AS283 - STOCK - UNISEX POLAR FLEECE
TOP WITH POCKETS, CHOC/MUSH & OLIVE/STONE
- from R301.00



AT283 - UNISEX POLAR FLEECE
TOP WITH POCKETS - from R322.00



AT283D - MENS ZIP-OFF
SLV PF TOP WITH PKTS - from R437.00



AT283C - UNISEX S/LESS
PF TOP WITH PKTS - from R292.00



AT283B - UNISEX 1/4 ZIP PF TOP
WITH SIDE PANELS - from R293.00



AS1008 - STOCK - LDS PF TOP,
RAGLAN SLV WITH PKTS,
CHOC/MUSH & STONE - from R302.00



AT1008 - LDS PF TOP,
RAGLAN SLV WITH PKTS
- from R314.00



AT1008D - LDS PF
ZIP-OFF SLV WITH
PKTS - from R418.00



AT1008C - LDS PF
SLVLESS TOP WITH
PKTS - from R285.00



AT1003 - LADIES FITTED RAGLAN
SLEEVE POLAR FLEECE TOP
WITH PKTS - from R308.00



AT026C - LADIES FITTED
SLEEVELESS POLAR FLEECE
TOP - from R293.00



AT1008A - LADIES POLAR FLEECE
TOP, RAGLAN SLEEVE, NO PKTS
TOP - from R285.00

Manufactured to your colour and trim detail - wide choice of fabric types and weights. 5 - 6 week delivery • Shading may occur within stock garment orders due to varying fabric batches • See Stock Catalogue for immediate delivery • Rise per size • Excl VAT & Freight • T's & C's Apply



AT566F - PONCHO CLOSED NECK
UNLINED KNEE LENGTH - from R325.00
WP OXFORD NYLON



AT566E - PONCHO CLOSED NECK PF LINED KNEE LENGTH - from R587.00
WP OXFORD NYLON & POLAR FLEECE



AT566 - PONCHO PF LINED, KNEE LENGTH - from R494.00
AT566C - PONCHO PF LINED ANKLE LENGTH - from R657.00
AT566B - PONCHO PF LINED CALF LENGTH - from R582.00
AT566D - PONCHO UNLINED KNEE LENGTH - from R285.00
AT566G-NOR - PONCHO PF CALF 1,2M UNLINED - from R425.00



ASTMPONC - PONCHO - DURABLE
RUBBERISED AND WATERPROOF,
CHOCOLATE, 1,2M LONG - from R239.00
Fabric: Nylon - Size: OSFA
ASTMPONO - OLIVE - from R239.00



AXTMRAINCOAT - RAINCOAT IN A BAG
- 1 PIECE - from R190.00

KIDS



Supplied in a bag

Pic of 6 year old Luke

ASTMKIDPONO - KIDS PONCHO
RUBBERISED AND WATERPROOF,
OLIVE, 69L X 78W - from R209.00
Fabric: Nylon - Size: OSFA



AXTMRAINSUIT - RAINSUIT IN A BAG
- 2 PIECE - from R224.00



LUXURY BUSH BLANKET
AT456A - 145 X 145CM - from R314.00
AT456B - 145 X 200CM - from R400.00
PC TWILL & POLAR FLEECE



PF BLANKET RAW CUT EDGE
AT454F - 140 X 100 - from R85.00
AT454E - 140 X 150 - from R126.00
AT454G - 140 X 200 - from R160.00



PF BLANKET HEMMED EDGE
AT454D - 140 X 150 - from R185.00
AT454C - 140 X 180 - from R208.00
AT454H - 140 X 200 - from R223.00



AT453 - HOT WATERBOTTLE cover - from R69.00