

since 1990



NATIONAL NUMBER

Tel: 0861-4-echef
0861-4-32433
sales@echef.co.za
www.echef.co.za

GAUTENG OFFICE

AMR Office Park
3 Concorde Road
Bedfordview
Johannesburg

CAPE TOWN

Unit G, Berkley Square
Ryger Street
Ndabeni
Maitland

GARDEN ROUTE

Riverview Complex
Barrington Road
Ruigtevlei
Sedgefield



eChef is a corporate member and sponsor

DEMAND THE BEST LOCAL QUALITY



1600 GARMENTS
MANUFACTURED PER DAY

200 000m
FABRIC IN STOCK

OVER 100
FACTORY STAFF

STATE OF THE ART AUTOMATED
GERBER MACHINES FOR CUTTING
AND LAYUP

CATEGORIES

WE SUPPLY INTERNATIONALLY
HOTELS & LODGES
RESTAURANTS
CULINARY & TRAINING SCHOOLS



IS ALSO SUPPLIED BY OUR ASSOCIATE

LEVEL 2 BEE

AFRI UNIFORM & CHEF
(contact us for details)



NEW MENS AND LADIES EXECUTIVE CHEF JACKET RANGE NOW AVAILABLE

SERVICE | QUALITY | COMFORT | PRICING | VALUE | **crocs™** **BIRKENSTOCK®**



FABRICS, COLOURS & WASHCARE



160gm Versatex TWILL

- 65% polyester / 35% cotton
- lightweight for hot kitchens

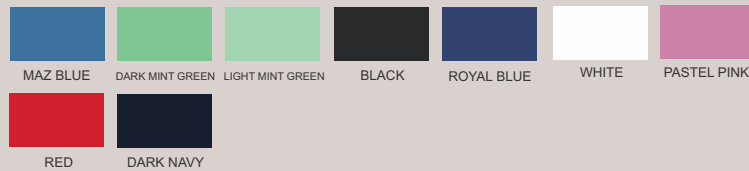
Please note that our colour swatches can represent slightly differently on individual screens. So, should you need critical colour matches please request a physical swatch as we cannot be held liable for incorrect colours via email viewing.



190gm Versatex POPLIN

- square weave poplin
- 65% polyester / 35% cotton
- soft, durable and comfortable

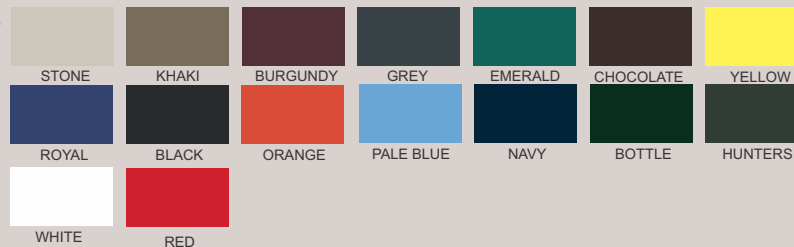
Please note that our colour swatches can represent slightly differently on individual screens. So, should you need critical colour matches please request a physical swatch as we cannot be held liable for incorrect colours via email viewing.



200gm Versatex TWILL

- 65% polyester / 35% cotton
- most popular
- durable
- colourfast
- AXTO1 / 17 / 18 coded garments

Please note that our colour swatches can represent slightly differently on individual screens. So, should you need critical colour matches please request a physical swatch as we cannot be held liable for incorrect colours via email viewing.



210gm P/C TWILL

- 80% polyester / 20% cotton
- durable
- colourfast
- EC coded garments

Please note that our colour swatches can represent slightly differently on individual screens. So, should you need critical colour matches please request a physical swatch as we cannot be held liable for incorrect colours via email viewing.



220gm 100% COTTON TWILL

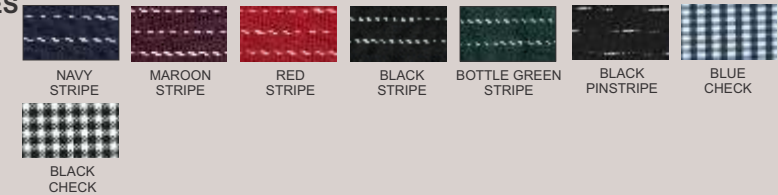
Please note that our colour swatches can represent slightly differently on individual screens. So, should you need critical colour matches please request a physical swatch as we cannot be held liable for incorrect colours via email viewing.



CHECKS & STRIPES

- printed onto a 200gm p/c twill

Please note that our colour swatches can represent slightly differently on individual screens. So, should you need critical colour matches please request a physical swatch as we cannot be held liable for incorrect colours via email viewing.



DENIM

- printed onto a 200gm p/c twill



240gm Release twill

- 65% polyester / 35% cotton
- treated to release stains



WASH CARE GUIDELINES: HOW TO INCREASE YOUR GARMENT LIFE SPAN

Follow the care instructions on the garment labels to preserve the appearance of your uniform.

GUIDELINES:

Washing:

Rather use brand washing powders & avoid harsh bar soaps and bleaches as they cause discolouring
Use very little fabric softener as this tends to weaken fibres

How to reduce creasing:

Hang washable garments on hanger whilst damp and minor creases should drop out

When ironing is required, iron on the reverse side to prevent "shining"

Drying:

Fasten all buttons & hang inside out, especially dark colours
If garments are left out in the sun all day they will be bleached by the sun

Stain removal:

Always carefully remove stains before washing or drying as heat can make stains permanent

TREATING STAINS:

Antiperspirant: Make a paste with bicarbonate of soda and salt and apply to stain for about 15 minutes. Soak in detergent and then wash as normal.

Ball Point Pen: Sponge with methylated spirits or Eau-de-Cologne. Any remaining stain should then be rubbed with soap and washed as normal.

Alcohol or Food: Use soda water. Place a towel under area. Fizz soda and rub in towards the centre of the spot.

Blood: Mop with tissues & soak in strongly salted cold water.

Keep changing the salt-water solution until it runs clear.
Sponge any remaining stain with warm water. Rinse with cold water. Wash the whole garment before the stain dries using a detergent.

Chewing Gum: Put the stained garment in a plastic bag and freeze overnight. Gum should scrape off easily, or brush egg white onto gum stains with a toothbrush and wash normally.

Fruit and Fruit Juices: Rub the stain with salt before washing. Rinse in cold water and soak in liquid detergent. (See care label)

Oil: Eucalyptus oil is an excellent oil and grease stain remover (from pharmacy). Using a cotton swab, apply to stained area and then wash as per the care instructions.

Tomato Sauce: Rinse in cold water and soak in liquid detergent. If necessary, treat with methylated spirits.

TREATING STAINS: Please follow these easy steps for Hand Washing:

Fill a bucket or deep sink with warm water and about a ¼ cup of detergent

Add to the water and leave to soak for a while if stained
Knead the clothing with your hands in the water for a few minutes, as much as you would knead bread

Rinse the clothing until water runs clear
Wring out the garment gently

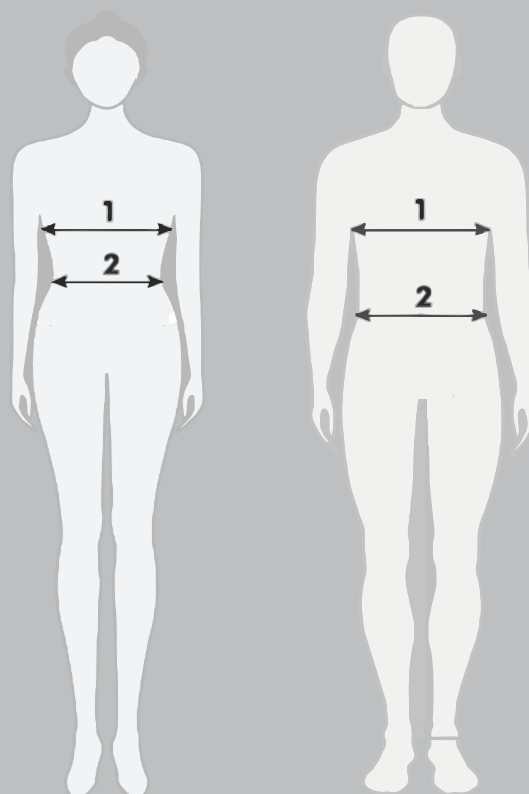
Turn garments inside out and close any buttons' or zips
Hang out to dry on a clothes line or a well-ventilated area

MEASURING

LADIES

1 - LADIES BUST: Measure at the fullest part of your bust, by placing the tape measure under your arms and across your shoulder blades. Remember to breathe out when taking this measurement.

2 - LADIES WAIST: Measure your waist around the natural waistline.



MENS

1 - MENS CHEST: Measure across the widest part of the chest, under the armpits, and around the back. Ensure that the tape is horizontal all the way around the body. (Do not allow it to dip at the back).

2 - MENS WAIST: Decide where you want your trousers to sit (on the hips, above the hips) and measure at this position. Ensure that the tape is horizontal to the ground.

SIZING

Please request an actual sample garment to confirm your sizing before placing your order as the information below is only a guideline. No returns if garments are supplied as per your order.

Chefs Double Breasted Jackets

Order:	32	34	36	38	40	42	44	46	48	50	52	54
Metric Size:	81	87	92	97	102	107	112	117	122	127	132	137
Half Chest:	46	49	52	55	58	61	63	67	70	72	74	77
Approx Alpha Size:			S		M		L	XL	2XL	3XL	4XL	5XL

Chef Flap Shirts

Order:	S	M	L	XL	2XL	3XL	4XL	5XL
Metric Size:	92-97	102-107	112	117-122	127-132	137-142	147	152
Inch Size:	36-38	40-42	44	46-48	50-52	54-56	58	60
Half Chest:	56	58	61	67	72	78	82	87

Chef Elasticated Trousers

Order:	S	M	L	XL	2XL	3XL	4XL	5XL
Inch Size:	26-28	30-32	34-36	38-40	42-44	46-48	50-52	52-54
Metric Size:	66-71	76-81	87-92	97-102	107-112	117-122	127-132	132-137

SHOES

Please order 1 pair of the size you need to confirm the general shoe size - no returns or swaps on shoe orders correctly supplied.

WASHING AND GARMENT CARE INFORMATION

- Cold water wash
- Do not tumble dry. This will increase the life of the garment
- Garments must be rinsed thoroughly
- When drying in sunlight the garments must be turned inside out to reduce colour fading
- Cool iron must be used on all fabrics except nylons and polar fleece materials (No Ironing)
- Do not iron on the screenprints or the embroideries
- Do not use bleach as this will weaken the fibres



STOCK JACKETS

manufactured using a DURABLE polycotton

ES2B

EXECUTIVE

BLACK WITH WHITE PIPING

ES2B

EXECUTIVE

WHITE WITH BLACK PIPING



EP17 - BLACK
FLAP SHIRT

EP17 - WHITE
FLAP SHIRT



EP1 - WHITE
D/BREASTED L/S

EP18 - BLACK
D/BREASTED S/S

EP18 - WHITE
D/BREASTED S/S



ES2B - EXECUTIVE CHEFS JACKET
WITH PIPING, FRENCH
CUFFS & UNDERARM EYELETS

210gm p/c twill

CHEFS FLAP SHIRT
WITH PRESS STUDS
& SHORT SLEEVES

200gm Versatex twill

EP1 - CHEFS JACKET,
DOUBLE BREASTED WITH WHITE
POPPERS, LONG SLEEVES

200gm Versatex twill

CHEFS JACKET, DOUBLE
BREASTED WITH MATCHING
POPPERS, SHORT SLEEVES

200gm Versatex twill

Choose locally manufactured quality chefs and kitchen garments - choose





STOCK GARMENTS

manufactured using a DURABLE polycotton



EP9 - BIB APRON WITH NECK ADJUSTER AND ROUNDED POCKET
72W X 86Lcm
• BLACK • WHITE

EP9 - FULL BUTCHERS APRON WITH NECK ADJUSTER AND ROUNDED POCKET
72W X 86Lcm
• BLUE & WHITE STRIPES

EP7 - BANDANNA OR DOEK, TRIANGULAR
100 X 70 X 70cm
• BLACK • WHITE



EP40 LADIES HALF ELASTICATED SKIRT WITH BUTTON & ZIP
• BLACK

EP11 UNISEX ELASTICATED PANTS WITH 3 POCKETS & DRAWCORD
• BLACK
• BLUE CHECK

EP6 - CHEFS BEANIE WITH TONAL TOPPING AND HIDDEN VELCRO CLOSER
7,5H X 18Dcm
• BLACK
• WHITE



EP8 - HALF APRON WITH RECTANGULAR POCKET
98W X 77Lcm
• BLACK • WHITE



COMMIS FLAP SHIRTS



AXTO17

- unisex
- pricewise & durable
- short sleeves
- sleeve pen / thermometer pocket
- front flap with press stud closer
- front chest yoke
- fabric and colour choices
- optional 3/4 or long sleeves with cuffs
- optional contrast / shwe shwe fabric
- sizes s - 5xl



EC17B



COMMIS DOUBLE BREASTED JACKETS

Double breasted - reversible front



AXTO1 - LONG SLEEVE

- unisex
- double breasted for maximum front protection
- can be worn left or right
- long sleeves with cuff or short sleeve
- left sleeve pen / thermometer pocket
- black or white poppers
- matching ladies unshaped style EC24 / EC24SS
- fabric and colour choices
- optional contrast collar and cuffs
- sizes 28 - 70



AXTO18 - SHORT SLEEVE

Choose locally manufactured quality chefs and kitchen garments - choose





EXECUTIVE CONTRAST COLLAR AND CUFFS



EC2

- unisex
- contrast collar and cuffs
- double breasted for maximum front protection
- can be worn left or right
- long sleeves with cuff or short sleeve
- left sleeve pen / thermometer pocket
- black or white poppers
- optional rear vents
- fabric and colour choices
- optional short sleeves with no piping EC2SS
- optional short sleeve without piping EC2B
- underarm eyelets
- sizes 30 - 60



underarm
eyelets



sleeve
pocket detail



optional rear
vent detail



french-cuff
detail



EXECUTIVE SINGLE FRONT PIPING



EC2B

- unisex
- collar, cuff and front flap piping
- double breasted for maximum front protection
- left sleeve pen / thermometer pocket
- underarm eyelets
- black or white poppers
- long sleeves with french cuffs or short sleeve with sleeve piping
- optional contrast collar and under cuffs
- matching ladies shaped style EC25 / EC25SS
- optional rear vents
- optional pricewise option AXTO2B
- sizes 30 - 60



EC2BSS



EXECUTIVE DOUBLE FRONT PIPING



EC3

- unisex
- double front piping, cuff and neck piping
- double breasted for maximum front protection
- left sleeve pen / thermometer pocket
- underarm eyelets
- black or white poppers
- short sleeves or long sleeve with french cuffs
- optional contrast collar or under cuffs
- optional rear vents
- sizes 30 - 60



EC3SS



underarm eyelets



optional rear vent detail



french-cuff detail



EXECUTIVE MOCK POCKET PIPING

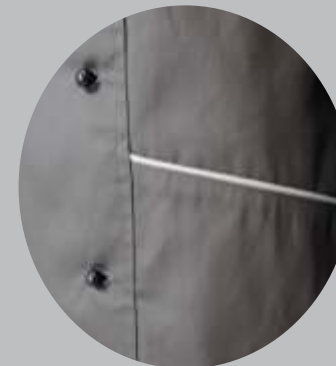


EC4

- unisex
- double breasted for maximum front protection
- long sleeve with french cuffs
- left sleeve pen / thermometer pocket with piping
- front mock pockets with piping detail
- underarm eyelets
- black or white poppers
- front, cuff and neck piping
- optional short sleeves with piping EC4SS
- optional rear vents
- sizes 30 - 60



pocket piping detail



mock front pocket piping detail





EXECUTIVE CONCEALED BUTTONS

MENS



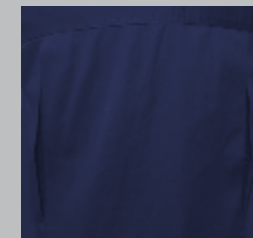
EC49

- unisex
- cross over front
- front and neck piping
- concealed front buttons
- long sleeve with fold up cuffs
- left sleeve pen / thermometer pocket
- underarm eyelets
- front and back shaped panels
- optional rear vents
- optional short sleeves with piping EC49SS
- ladies style available - EC48
- sizes unisex 30 - 60

LADIES EC48



underarm eyelets



optional rear
vent detail



pocket detail



EXECUTIVE NECKLINE DETAIL



EC55

- unisex
- double breasted for maximum front protection
- piping on collar, sleeve, cuffs and pockets
- long sleeve with french cuffs
- left chest inset pocket with piping
- left sleeve pen / thermometer pocket with piping
- underarm eyelets
- option short sleeves with piping EC55SS
- optional rear vents
- black or white poppers
- sizes 30 - 60



pocket piping
detail



optional rear
vent detail



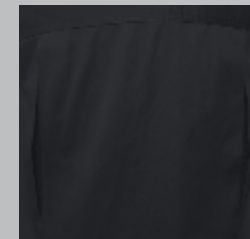


EXECUTIVE RAGLAN 3/4 SLEEVE



EC52

- unisex
- raglan 3/4 sleeve
- cross over front
- stylish contrast front colour detail
- concealed placket with buttons
- left sleeve pen / thermometer pocket with contrast
- back shaped panels
- side slits with contrast colour
- optional short sleeve without piping EC52SS
- optional back vents
- sizes 30-60



optional rear vent detail



front contrast insert



pocket detail with contrast

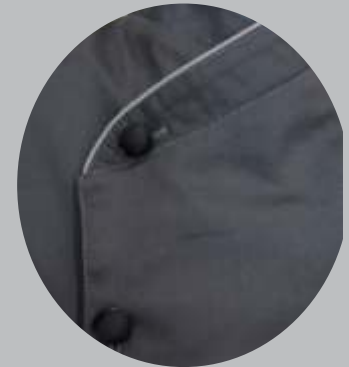


EXECUTIVE DOUBLE PIPING

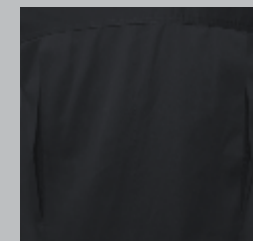


EC53

- unisex
- cross over front with piping
- front pocket with double piping detail
- piping collar, pocket and sleeve cuff detail
- long sleeve with fold up cuff and double piping
- left sleeve pen / thermometer pocket
- fabric covered front buttons (white and black only)
- optional short sleeves with piping EC53SS
- optional rear vents
- sizes 30-60



neckline & covered button detail



optional rear vent detail



double piping sleeve cuff detail



LADIES COMMIS DOUBLE BREASTED JACKETS



EC24
LONG SLEEVE

- double breasted for maximum front protection
- can be worn left or right
- long sleeve with cuffs or short sleeve
- left sleeve pen / thermometer pocket
- unshaped style
- 3 panel shaped back
- black or white poppers
- fabric and colour choices
- matches unisex style EP1 / AXTO1 / AXTO18
- sizes 30-50



EC24SS
SHORT SLEEVE



LADIES EXECUTIVE SINGLE PIPING SHAPED

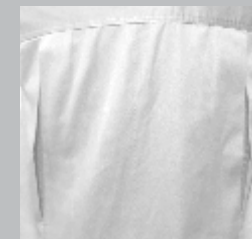


EC25

- double breasted for maximum front protection
- long sleeves or short sleeves with piping
- french cuffs with piping
- piping collar, front and cuffs
- left sleeve pen / thermometer pocket
- shaped style
- 3 panel shaped back
- side slits with contrast
- black or white poppers
- optional short sleeves with piping EC25SS
- optional rear vents
- matches unisex style EC2B / ES2B
- sizes 30-50



french cuff detail



optional rear vent detail



left sleeve pen / thermometer pocket



LADIES EXECUTIVE COVERED FRONT ZIP



EC50

- ladies
- concealed zip front
- piping top collar, front left and right panels and cuffs
- french cuffs with piping
- long sleeve or short sleeve with piping
- underarm eyelets
- shaped style
- 3 panel shaped back
- optional short sleeves with piping EC50SS
- optional rear vents
- sizes 30 - 50



eyelet detail



zip detail



optional rear vent detail



french cuffs detail



LADIES EXECUTIVE - CONCEALED BUTTONS



EC51

- ladies
- double breasted front
- concealed placket front with buttons and snaps
- long sleeves with fold up cuffs or short sleeves
- shaped style
- side panels on front and 3 panel back
- left sleeve pen / thermometer pocket
- side slits
- underarm eyelets
- optional short sleeves with piping EC51SS
- optional rear vents
- sizes 30 - 50



concealed button placket & sleeve pocket detail



optional rear vent detail



LADIES EXECUTIVE CONCEALED BUTTONS



EC48

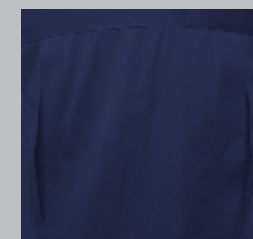
LADIES

- ladies
- cross over front
- front and neck piping
- concealed front buttons
- long sleeve with fold up cuffs
- left sleeve pen / thermometer pocket
- underarm eyelets
- front and back shaped panels
- optional short sleeves with piping EC48SS
- optional rear vents
- mens style available - EC49
- sizes unisex 30 - 50

MENS EC49



underarm eyelets



optional rear
vent detail



pocket detail



TROUSERS & SKIRTS, SUSHI, KIDS & BARISTA



AT747B - LADIES FLAT FRONT COTTON CHINOS

- BLACK
- STONE
- NAVY

AXCM-TGF-223 - MENS FLAT FRONT COTTON CHINOS

- BLACK
- STONE
- NAVY

AXT011B
UNISEX CARGO ELASTICATED PANTS WITH 3 POCKETS & DRAWCORD & WITH CARGO POCKETS

- ALL COLOURS
- CHECKS & STRIPES



AXKVLAS175B - GOLFER UTILITY GOLF SHIRT POLYCOTTON

AXT040
LADIES HALF ELASTICATED SKIRT WITH BUTTON & ZIP

- ALL COLOURS
- CHECKS & STRIPES

AXT011
UNISEX ELASTICATED PANTS WITH 3 POCKETS & DRAWCORD

- ALL COLOURS
- CHECKS & STRIPES
- DENIM



SUSHI



EC47 - SUSHI BOAT STYLE BEANIE WITH PIPING DETAIL

EC46 - WRAP STYLE SUSHI CHEF TOP WITH SIDE TIE AND FRONT POCKET 3/4 SLEEVE

BARISTA

AT870
WAISTCOAT WITH 4 BUTTONS & BACK BUCKLE

- ALL FABRICS
- ALL COLOURS

AXCM-TG1-460
TROUSER - PLEATED SERVICE POLYESTER

- BLACK
- NAVY

EC33A
BAR APRON 59W X 46Lcm WITH RECTANGULAR POCKET

- ALL FABRICS
- ALL COLOURS



AT1004
BARISTA SHIRT WITH MANDARIN COLLAR & COVERED FRONT BUTTON STAND

AT370BLS
MENS CONTRAST LOUNGE SHIRT

- S/S OR L/S

AXKVLO-PLA
MENS CLASSIC LOUNGE SHIRT

- S/S OR L/S



EC17K
KIDS CHEFS FLAP SHIRT WITH PRESS STUDS & SHORT SLEEVES

- ALL COLOURS
- AGES 4/8/12

EC8K
KIDS HALF APRON WITH RECTANGLE POCKET

- ALL COLOURS
- AGES 4/8/12

EC5K - KIDS MUSHROOM HAT WITH VELCRO ADJUSTER

- ALL COLOURS
- OSFA

KIDS AGES 4/8/12



Choose locally manufactured quality chefs and kitchen garments - choose





HALF APRONS

AXTO33
BAR APRON WITH POCKET
59W X 46Lcm
• ALL COLOURS



EC33A
HALF APRON WITH
TWILL POCKET STRIPES
54W X 46Lcm
• ALL COLOURS



AXTO8
HALF APRON WITH
RECTANGLE POCKET
98W X 77Lcm
• ALL COLOURS
• STOCK EP8 WHITE
• STOCK EP8 BLACK
• CHECKS & STRIPES
• DENIM



AT953C
• CONTRAST WAISTBAND
• FOLD OVER WAIST TO
COVER TIES
• WRAP AROUND WAIST
• SIDE LOOP FOR DISH TOWEL
• ONE SIDE POCKET
• FRONT SLIT
• 86CM (LENGTH)
• 96CM (WIDTH AT WAIST)
• 66CM (WIDTH AT HEM)
• MITRED BACK IE. TAPERED
FROM TOP TO BOTTOM

AT1076 - HALF APRON
WITH PIPED POCKET

CHEFS HALF APRON

AT1071
• FRONT SLIT
• V-SHAPED POCKET
• TIES TO BACK
OR FRONT
• 77CM IN LENGTH
• MITRED BACK IE.
TAPERED FROM TOP
TO BOTTOM



AT509 - 93cm Long
WAITERS WRAP APRON WITH
REAR MITRED CORNERS

AT509B - 79cm Long
• ALL COLOURS

AT1048
HALF APRON WITH FRONT
TIES AND A CONTRAST POCKET
63W X 80Lcm
• ALL COLOURS



AT1049
WAITERS HALF APRON WITH
CONTRASTING STITCHING,
2 PEN SLOTS, OFF-CENTRE POCKET
& FRONT TIES
• ALL COLOURS

CUSTOM HALF APRON
WE CAN DESIGN ANY
APRON YOU REQUIRE
• ALL COLOURS & DESIGNS



AT953
FOLD OVER WAITERS APRON,
FRONT SPLIT, SIDE POCKET,
FRONT TIES & CLOTH LOOP
96W X 89Lcm





FULL APRONS



AXT09
FULL FRONT BIB APRON
WITH ROUND POCKET
& NECK ADJUSTER
• ALL COLOURS
• STOCK EP9 WHITE
• STOCK EP9 BLACK
• STRIPES OR CHECKS
• DENIM



PVC

AXFWAPRON PVC
FULL FRONT
70W X 110Hcm
• WHITE



CHEFS FULL APRON

AT919
EXECUTIVE BIB APRON
LARGER 85X106cm,
WITH FRONT POCKET
& ADJUSTABLE
NECK STRAP
85W X 106Lcm
• ALL COLOURS



AT919B - DENIM
EXECUTIVE BIB APRON
LARGER 85X106cm,
WITH FRONT POCKET
& ADJUSTABLE
NECK STRAP
85W X 106Lcm



EC41A
TUXEDO APRON WITH
FRONT POCKET
• ALL COLOURS



AT1050
FULL FRONT BIB APRON
WITH CONTRAST WIDE
POCKET & TOP METAL
HORIZONTAL ZIP DETAIL
• ALL COLOURS



AT1022
SOMMELIER ROUND
NECK APRON
• ALL COLOURS



CUSTOM FULL APRON
FULL APRON
WE CAN DESIGN ANY
APRON YOU REQUIRE
• ALL COLOURS
• ALL DESIGNS
• ALL FABRICS



Choose locally manufactured quality chefs and kitchen garments - choose



HEADWEAR



EP6 - STOCK - BLACK AND WHITE 7,5 X 18CM
WITH COVERED VELCRO AND TOP PIPING



AXTO6 - ALL COLOURS / CHECKS & STRIPES
7,5 X 18CM WITH COVERED VELCRO AND TOP PIPING



EC6D - CLOSED COVERED REAR ELASTIC
10 X 18CM WITH TOP PIPING



EC6E - OPEN COVERED REAR ELASTIC
10 X 18CM WITH TOP PIPING



EC6 - ELASTIC CLOSER, NO PIPING
10 X 18CM

EC6A - ELASTIC CLOSER, NO PIPING
12 X 18CM



EC6B - ELASTIC CLOSER
10 X 18CM WITH TOP PIPING



EC44 - CHEFS BEANIE WITH V BACK AND COVERED VELCRO ADJUSTER
• ALL COLOURS • STRIPES AND CHECKS • OPTIONAL CONTRAST CROWN SECTION



AXCY5PANEL - 5 PANEL FLAT FRONT CAP
• MOST COLOURS



AXCYCLASSIC6 - CLASSIC 6 PANEL BASEBALL CAP
• MOST COLOURS



AXTOTORCHON
CHEFS PADDED COTTON SERVING CLOTH



AXT05 - CHEFS HAT
WITH VELCRO ADJUSTER
• ALL COLOURS



EC21 - BANDANNA WITH PANELS
• ALL COLOURS



AXTO7 - BANDANNA OR DOEK, TRIANGULAR, 100 X 70 X 70cm
• ALL COLOURS • STOCK EP7 WHITE • STOCK EP7 BLACK



AXKVBC-5
CHEF SKULL CAP MESH SIDES
• MOST COLOURS
(Black, White, Red, Lime)



EC47 - SUSHI BOAT
STYLE BEANIE WITH
PIPING DETAIL



SHOES AND CLOGS

NO EXCHANGE OR RETURNS
ON CORRECTLY SUPPLIED SIZES

UNISEX CHEFS CLOG LEATHER SLIPON LEMAITRE
(Ladies order one size smaller than men)

AYBN8008 - STC
AYBN8007 - NSTC
• Slip resistant sole




LEMAITRE

UNISEX LEMAITRE
GENERAL ALL PURPOSE SHOE

AYBN8102 - STC
AYBN8091 - NSTC
• Slip resistant sole




LEMAITRE

LADIES LEATHER LACE-UP SHOE,

• STC
• NSTC
AYSIS4001
• Slip resistant sole



LADIES CHEF CLOG WHITE
NSTC
AYBTLDSMULE-W

MENS CHEF CLOG WHITE
NSTC
AYBTMNSMULE-W



Bata

LADIES CHEF CLOG BLACK
NSTC
AYBTLDSMULE-B

MENS CHEF CLOG BLACK
NSTC
AYBTMNSMULE-B



Bata

BISTRO WORK
AYFF10075



crocs™

Choose locally manufactured quality chefs and kitchen garments - choose





Authorised
reseller



PU Clogs



function.

Birkis

Our most popular - Super-Birki

made from Birki-foam, with replaceable footbed

Checklist „Super-Birki“

replaceable footbed:	✓
footbed washable at:	30°C
raised heel:	✓
washable at*:	60°C
chemical resistant**:	✓
grease resistant:	✓
oil resistant:	✓
TUV-tested:	✓



Available in
• Blue
• Black



Cork replacement
footbed
washable at 30°C
acrylic fabric beige/coloured
size 26 – 48

Ideal for the most
demanding tasks

Profi-Birki

made from Birki-foam, with replaceable footbed

Checklist „Profi-Birki“

replaceable footbed:	✓
footbed washable at:	30°C
raised heel:	✓
slip-resistant sole:	✓
extra deep sole profile:	✓
washable at*:	60°C
chemical resistant**:	✓
grease resistant:	✓
oil resistant:	✓
TUV-tested:	✓



Available in
• Black



PU replacement
footbed
washable at 30°C
fleece black
size 35 – 48



DISTINCTIVE PROFILE
• resistant to grease, oil and lye
• 2,5 mm deep abrasive profile



RAISED HEEL AREA
• prevents involuntary slipping out of the clog
• for safe standing on slippery ground



Birkenstock size conversion - order in Euro sizing		
Measurement (mm)	Eur	UK
150	24	7
160	25	8
165	26	8.5
170	27	9
180	28	10
185	29	11
190	30	11.5
200	31	13
205	32	13.5
210	33	1
220	34	2
225	35	2.5
230	36	3.5
240	37	4.5
245	38	5
250	39	5.5
260	40	7
265	41	7.5
270	42	8
280	43	9
285	44	9.5
290	45	10.5
300	46	11.5
305	47	12
310	48	13
320	49	14
325	50	14.5

REGULAR WIDTH		
Adult Sizes	Footbed Length	Footbed Width
35 Regular	225mm	89mm
36 Regular	230mm	91mm
37 Regular	240mm	93mm
38 Regular	245mm	95mm
39 Regular	250mm	97mm
40 Regular	260mm	99mm
41 Regular	265mm	101mm
42 Regular	270mm	102mm
43 Regular	280mm	103mm
44 Regular	285mm	107mm
45 Regular	290mm	109mm
46 Regular	295mm	113mm
47 Regular	305mm	115mm
48 Regular	310mm	117mm
49 Regular	315mm	119mm
50 Regular	325mm	121mm

NARROW WIDTH		
Adult Sizes	Footbed Length	Footbed Width
35 Narrow	225mm	85mm
36 Narrow	230mm	87mm
37 Narrow	240mm	89mm
38 Narrow	245mm	91mm
39 Narrow	250mm	93mm
40 Narrow	260mm	95mm
41 Narrow	265mm	97mm
42 Narrow	270mm	99mm
43 Narrow	280mm	101mm
44 Narrow	285mm	103mm
45 Narrow	290mm	105mm
46 Narrow	295mm	107mm
47 Narrow	305mm	109mm
48 Narrow	310mm	111mm
49 Narrow	315mm	113mm
50 Narrow	320mm	115mm

BOSTON SUPER GRIP SOLE



BOSTON SL
Black | Natural leather
35-48



Regular Fit Narrow Fit

Available in
• Black

TOKIO SUPER GRIP SOLE



TOKIO SL
Black | Natural leather
35-48



Regular Fit Narrow Fit

Available in
• Black

BOSTON ESD SOFT FOOTBED



BOSTON ESD
Black | Natural leather
36-42
39-48



Regular Fit Narrow Fit

Available in
• Black

6 month quality guarantee on workmanship ("walk-in" replacement) / Ex-stock (If the item is not in stock then delivery is usually 2/3 months) / Excludes delivery cost



NAPKINS & TABLECLOTHS

200gm polycotton twill or 220gm cotton twill



AXTONP30C
30 X 30cm NAPKINS
• ALL COLOURS



AXTONP40C
40 X 40cm NAPKINS
• ALL COLOURS



AXTONP50C
50 X 50cm NAPKINS
• ALL COLOURS



AXTOOL90C
90 X 90cm OVERLAYS
• ALL COLOURS



AXTOTC143C
43 X 143cm TABLECLOTH
• ALL COLOURS



AXTOTC200C
143 X 200cm TABLECLOTH
• ALL COLOURS



AXTOTC250C
143 X 250cm TABLECLOTH
• ALL COLOURS



AXTOTC300C
143 X 300cm TABLECLOTH
• ALL COLOURS



AXTOTC350C
143 X 350cm TABLECLOTH
• ALL COLOURS



AXTOTC400C
143 X 400cm TABLECLOTH
• ALL COLOURS

Choose locally manufactured quality chefs and kitchen garments - choose

