



Shop online now & receive free delivery within SA for all orders of R3500+



FABRICS & COLOURS

TECHNICAL FABRIC

- antisticking quick dry
- UV protection
- easy care with shape retention
- cool and colour fast



120gm POLYCOTTON SHIRTING - Easy care and cool



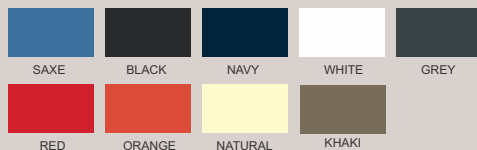
145gm 100% COTTON TWILL - Pre shrunk, light and cool cotton



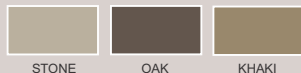
220gm 100% COTTON TWILL



220Egm 100% COTTON TWILL



235g 100 % BRUSHED COTTON TWILL - SABS quality approved



160gm POLYCOTTON TWILL - lighter and durable



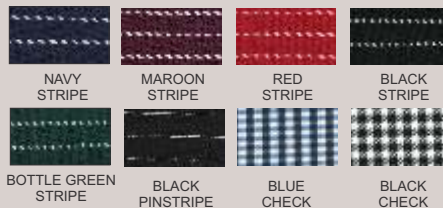
200Egm POLYCOTTON TWILL



210gm POLYCOTTON TWILL



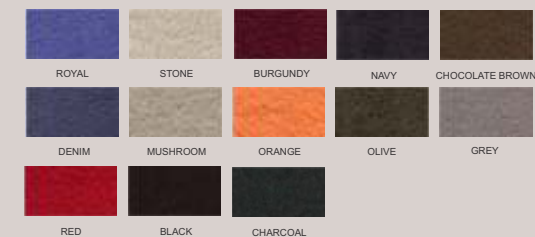
CHECKS & STRIPES POLYCOTTON TWILL



POLAR FLEECE MICRO 200gm, anti pill, technical

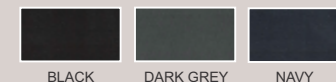


POLAR FLEECE NORMAL - 250gm, anti pill



SOFTSHELL

- breathable
- waterproof
- mens and ladies jackets
- bonded with fleece inner



MICRO SOFTSHELL

- water repellent
- micro polyester
- mens and ladies jackets
- bonded with single jersey

Bonded with white single jersey



Bonded with black single jersey



SIZING INFORMATION

Please request an actual sample garment to confirm your sizing before placing your order as the information below is only a guideline. No returns if garments are supplied as per your order.

General Metric Conversion Table

INCHES:	28	30	32	34	36	38	40	42	44	46	48
CMS:	71	76	81	87	92	97	102	107	112	117	122

Men's Lounge Shirts

Measure under your arms, around your back and around the top part of your chest with your arms at your sides

ORDER:	32	34	36	38	40	42	44	46	48	50	52	54
Metric Size:	81	87	92	97	102	107	112	117	122	127	132	137
Approx S, M, L:	S	S	S	M	M	L	L	XL	2XL	3XL	4XL	5XL

Unisex Tunics & Men's Bush Shirts - cut on the larger size

Measure under your arms, around your back and around the top part of your chest with your arms at your sides

ORDER:	XS	S	M	L	XL	2XL	3XL	4XL
Inch Size:	30-32	34-36	38-40	42-44	46-48	50-52	54-56	58-60

Men's Trousers and Shorts - measure around your waist

ORDER:	28	30	32	34	36	38	40	42	44	46	48
Metric Size:	71	76	81	87	92	97	102	107	112	117	122

Ladies Polar Fleece Top 1008 / Soft Shell Jacket 1059

ORDER:	XS	S	M	L	XL	2XL	3XL
Inch Size:	30	32-34	36-38	40	42	44	46

Unisex polar Fleece Tops 283

ORDER:	S	M	L	XL	2XL	3XL	4XL	5XL
Inch Size:	34-36	38-40	42-44	46-48	50-52	54	56	58

Overalls—conti suits are ordered by chest measurement

- our suggestion is to order 1 size bigger than chest measurement to allow for movement and clothing to be worn under the suits
- conti pants in the set are 2 sizes smaller per industry norm - see below
- above based on a slim body type, larger body types to order 2 sizes bigger
- please order a sizing set before placing your order as there are no returns on conti suits correctly supplied

Conti suit sets

ORDER Top Size:	32	34	36	38	40	42	44	46	48	50
Pants - elasticated:	28	30	32	34	36	38	40	42	44	46

When ordering conti pants only

Please order 1 size you need to confirm the general sizing as there are no returns on conti pants correctly supplied

Your waist size:	28	30	32	34	36	38	40	42	44	46	48
Pants relaxed:	26	28	30	32	34	36	38	40	42	44	46
Pants full stretched:	36	38	40	42	44	46	48	50	52	54	56

Ladies Size Chart for Shirts and Tops

Measure under your arms, around your back and around the largest part of your bust with your arms at your sides

ORDER:	28	30	32	34	36	38	40	42	44	46
Metric Size:	72	77	82	87	92	97	102	107	112	117
Approx S, M, L:	XS	S	S	M	M	L	XL	2XL	3XL	4XL

Ladies pants and skirts

Measure around your hips 2 fingers above where the trouser lower waistband would sit

ORDER:	28	30	32	34	36	38	40	42	44	46	48	50	52	54
Metric Size:	72	77	82	87	92	97	102	107	112	117	122	127	132	137

Chefs Double Breasted Jackets

Order:	32	34	36	38	40	42	44	46	48	50	52	54
Metric Size:	81	87	92	97	102	107	112	117	122	127	132	137
Half Chest:	46	49	52	55	58	61	63	67	70	72	74	77
Approx Alpha Size:			S		M		L	XL	2XL	3XL	4XL	5XL

Chef Flap Shirts

Metric Size:	92-97	102-107	112	117-122	127-132	137-142	147	152
Inch Size:	36-38	40-42	44	46-48	50-52	54-56	58	60
Half Chest:	56	58	61	67	72	78	82	87
Order:	S	M	L	XL	2XL	3XL	4XL	5XL

Chef Elasticated Trousers

Inch Size:	26-28	30-32	34-36	38-40	42-44	46-48	50-52	52-54
Metric Size:	66-71	76-81	87-92	97-102	107-112	117-122	127-132	132-137
Order:	S	M	L	XL	2XL	3XL	4XL	5XL

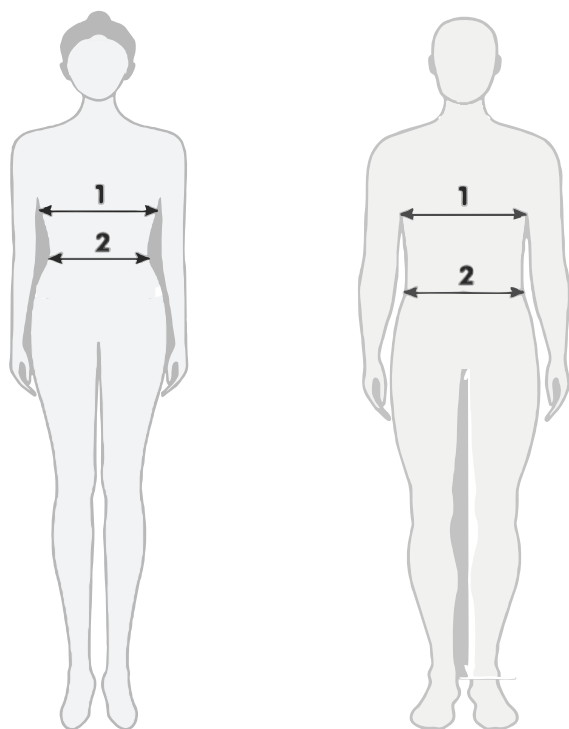
MEASURING & WASHCARE

1 - LADIES BUST: Measure at the fullest part of your bust, by placing the tape measure under your arms and across your shoulder blades. Remember to breathe out when taking this measurement.

2 - LADIES WAIST: Measure your waist around the natural waistline.

1 - MENS CHEST: Measure across the widest part of the chest, under the armpits, and around the back. Ensure that the tape is horizontal all the way around the body. (Do not allow it to dip at the back).

2 - MENS WAIST: Decide where you want your trousers to sit (on the hips, above the hips) and measure at this position. Ensure that the tape is horizontal to the ground



COTTON GARMENT WASH CARE

- Cold water wash
- Garments must be rinsed thoroughly - modern washing powder contains optical bleach which, when poorly rinsed, reacts with the sun to bleach the fabric
- Sunlight bleaches colours
- When drying in sunlight the garments must be turned inside out to reduce colour fading
- Perspiration will bleach the colour from cotton garments
- Allow up to 5% shrinkage

WASHING AND GARMENT CARE INFORMATION

- Cold water wash
- Do not tumble dry. This will increase the life of the garment
- Garments must be rinsed thoroughly
- When drying in sunlight the garments must be turned inside out to reduce colour fading
- Cool iron must be used on all fabrics except nylons and polar fleece materials (No Ironing)
- Do not iron on the screenprints or the embroideries
- Do not use bleach as this will weaken the fibres

WASHCARE GUIDELINES - HOW TO INCREASE YOUR WARDROBE LIFE SPAN:

Follow the care instructions on the garment labels to preserve the appearance of your uniform.

It is each staff members own responsibility to take care of their uniform.

Washing:

- Rather use brand washing powders & avoid harsh bar soaps and bleaches as they cause discolouring
- Use very little fabric softener as this tends to weaken fibres

How to reduce creasing:

- Hang up garment after wearing.
- Jackets should be placed on a hanger when not being worn
- Hang washable garments on hanger whilst damp and minor creases should drop out
- When ironing is required, iron on the reverse side to prevent "shining"

Drying:

- Fasten all buttons & hang inside out, especially dark colours
- If garments are left out in the sun all day they will be bleached by the sun

Stain removal:

- Always carefully remove stains before washing or drying as heat

can make stains permanent

TREATING STAINS:

Antiperspirant: Make a paste with bicarbonate of soda and salt and apply to stain for about 15 minutes. Soak in detergent and then wash as normal.

Ball Point Pen: Sponge with methylated spirits or Eau-de-Cologne. Any remaining stain should then be rubbed with soap and washed as normal.

Alcohol or Food: Use soda water. Place a towel under area. Fizz soda and rub in towards the centre of the spot.

Blood: Mop with tissues & soak in strongly salted cold water. Keep changing the salt-water solution until it runs clear. Sponge any remaining stain with warm water. Rinse with cold water. Wash the whole garment before the stain dries using a detergent.

Chewing Gum: Put the stained garment in a plastic bag and freeze overnight. Gum should scrape off easily, or brush egg white onto gum stains with a toothbrush and wash normally.

Coffee and Tea: Soak in lukewarm detergent solution. (Always dissolve the detergent in water

soaking). Then treat with methylated spirits.

Fruit and Fruit Juices: Rub the stain with salt before washing. Rinse in cold water and soak in liquid detergent. (See care label)

Oil: Eucalyptus oil is an excellent oil and grease stain remover (from pharmacy). Using a cotton swab, apply to stained area and then wash as per the care instructions.

Tomato Sauce: Rinse in cold water and soak in liquid detergent. If necessary, treat with methylated spirits.

HAND WASHING:

- Fill a bucket or deep sink with warm water and about a ¼ cup of detergent
- Put your clothing in the water and leave to soak for a while if stained
- Knead the clothing with your hands in the water for a few minutes, as much as you would knead bread
- Rinse the clothing until water runs clear, not soapy
- Wring out the garment gently
- Turn garments inside out and close any buttons' or zips
- Hang out to dry on a clothes line or a well-ventilated area



STOCK - 2 WEEKS DELIVERY

OUR FULL STOCK RANGE 'AS' CODED IS AVAILABLE ON A 2 WEEK DELIVERY WITH EMBROIDERY



Shop online now & receive free delivery within SA for all orders of R3500+



2 week delivery is ex-factory and stock dependent at the time of placing your order and is valid for all approved current logos. Please add a week for new logos

LADIES TECHNICAL - STONE & OLIVE



LADIES BUSH SHIRT SHAPED
WITH FLAP POCKETS
Size: Ladies 30 - 42



AS150F - from R264.00
SHORT SLEEVES

AS150G - from R291.00
LONG SLEEVES WITH ROLLUP STEVE TAB

OUR TECHNICAL FABRIC HAS THE
FOLLOWING GENUINE PROPERTIES:

FABRIC ENGINEERED AND
MANUFACTURED IN SOUTH AFRICA

SWING TICKET



MENS TECHNICAL - STONE & OLIVE



MENS BUSH SHIRT
WITH FLAP POCKETS
Size: S - 3XL



As047 - from R324.00
SHORT SLEEVES

AS044 - from R378.00
LONG SLEEVES WITH ROLLUP STEVE TAB

OLIVE ONLY



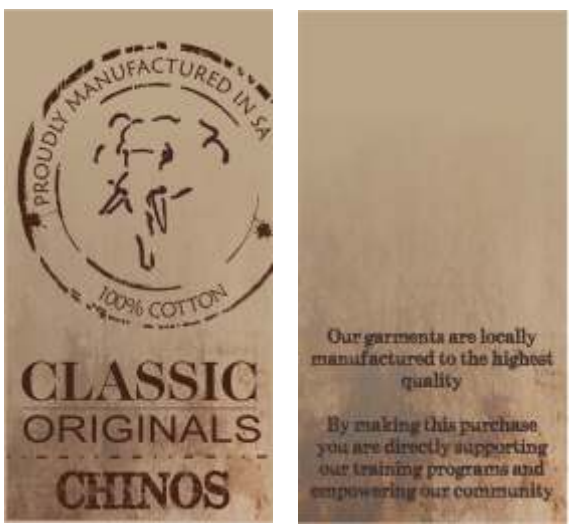
REAR VENT



AS880LS - from R405.00
VENTED LONG SLEEVE - OLIVE ONLY



SWING TICKET



"CLASSIC ORIGINALS" MENS BUSH SHIRT
KHAKI ONLY
235g BRUSHED COTTON TWILL
Size: S - 3XL



AS044-235 - from R343.00
LONG SLEEVES WITH ROLLUP STEEVE TAB



AS047-235 - from R296.00
SHORT SLEEVES

STONE KHAKI OAK



AS857-235 - from R289.00
'CLASSIC ORIGINALS' MENS FLAT FRONT CHINOS
• Premier brand at wholesale pricing
• Washed & brushed 100% cotton twill
• Back jet pocket
• YKK Zipper
• SABS quality fabric
Size: Men 30 - 44

SHORTS - 3 WEEK DISPATCH

AS856-235 - 'CLASSIC ORIGINALS' MENS FLAT

FRONT CARGO OR CHINO SHORTS

CHINO



AS856CH - INNER LEG 21cm
from R305.00

CHINO



AS856BE - INNER LEG 26cm
from R305.00

CARGO



AS856CC - INNER LEG 21cm
from R325.00

CARGO



AS856BC - INNER LEG 26cm
from R325.00

Shading may occur within stock garment orders due to varying fabric batches

MENS

LADIES



SOFTSHELL JACKET WITH POCKETS - GREY

AS1058G - MENS - from R473.00

AS1059G - LADIES - from R434.00

Size: S - 2XL



ASTMPLIO - ADULTS LINED PONCHO

DURABLE - HEAVY RUBBERISED

AND POLAR FLEECE LINED

1,2M LONG - from R610.00

Fabric: Nylon - Size: OSFA



Supplied
in a bag

ASTMPONC - ADULTS PONCHO - DURABLE

RUBBERISED AND WATERPROOF,

CHOCOLATE, 89L X 140W - from R239.00

Fabric: Nylon - Size: OSFA

ASTMPONO - OLIVE - from R239.00

KIDS



Supplied
in a bag

Pic of 6 year
old Luke

ASTMKIDPONO - KIDS PONCHO

RUBBERISED AND WATERPROOF,

OLIVE, 69L X 78W - from R190.00

Fabric: Nylon - Size: OSFA



AS1069G - JACKET WR WARM

**QUILTED PADDED LINING
AND FOLD-IN HOOD**

BOTTLE GREEN - from R499.00

Fabric: Oxford Nylon WP



AS780 - UNISEX TUNIC

**STONE AND BLACK SHIRT SS
SERVICE STAFF** - from R256.00

Fabric: 210G Polycotton Twill

Size: XS - 3XL



**EP11 - BLACK - UNISEX
BLACK ELASTICATED PANTS
WITH PKTS** - from R193.80

Fabric: Polycotton Twill

Size: S - 5XL



AS747B - LADIES STONE

**MID RISE FLAT FRONT
TROUSERS** from R288.00

Fabric: 210G Polycotton Twill

Size: Ladies 28 - 48



**UNISEX POLAR FLEECE
TOP WITH POCKETS**
AS283CM - CHOCOLATE / MUSHROOM
AS283OS - OLIVE / STONE
- from R287.00
Fabric: Normal Polar Fleece
Size: XS - 3XL



**LADIES PF TOP, RAGLAN
SLV, PKTS, INNER COLLAR**
AS1008CM - CHOCOLATE / MUSHROOM
AS1008ST - STONE
- from R279.00
Fabric: Normal Polar Fleece
Size: S - 2XL



**UNISEX POLAR FLEECE
TOP - NO POCKETS**
AS283AB - BLACK
from R237.00
Fabric: Normal Polar Fleece
Size: XS - 3XL



**UNISEX SLEEVELESS
POLAR FLEECE TOP WITH PKTS**
AS283CCM - CHOCOLATE / MUSHROOM
- from - R270.00
Fabric: Polar Fleece Normal
Size: S - 2XL



**SHERPA FLEECE UNISEX
SLEEVELESS TOP**
AS283CSH - CHOCOLATE / STONE
from R299.00
Size: S - 2XL



EP40
LADIES HALF
ELASTICATED
SKIRT WITH
BUTTON & ZIP
• BLACK

EP11
UNISEX ELASTICATED
PANTS WITH 3 POCKETS
& DRAWCORD
• BLACK
• BLUE CHECK



**EP8 - HALF APRON WITH
RECTANGULAR POCKET**
98W X 77Lcm
• BLACK
• WHITE

**EP9 - BIB APRON WITH
NECK ADJUSTER AND
ROUNDED POCKET**
72W X 86Lcm
• BLACK
• WHITE

**EP9 - FULL BUTCHERS
APRON WITH NECK ADJUSTER
AND ROUNDED POCKET**
72W X 86Lcm
• BLUE & WHITE STRIPES



**EP7 - BANDANNA OR DOEK,
TRIANGULAR**
100 X 70 X 70cm
• BLACK
• WHITE



EP6
CHEFS BEANIE WITH TONAL
TOPPING AND HIDDEN
VELCRO CLOSER
7,5H X 18Dcm
• BLACK
• WHITE



ES2BBW
EXECUTIVE

ES2BWB
EXECUTIVE

EP17 - BLACK
FLAP SHIRT

EP17 - WHITE
FLAP SHIRT

EP18 - BLACK
D/BREADED S/S

EP18 - WHITE
D/BREADED S/S

EP1 - WHITE
D/BREADED L/S

ES2B
EXECUTIVE CHEFS JACKET WITH PIPING,
FRENCH CUFFS & UNDERARM EYELETS
ES2BWB - WHITE WITH BLACK PIPING
ES2BBW - BLACK WITH WHITE PIPING

EP17
CHEFS FLAP SHIRT WITH PRESS STUDS
& SHORT SLEEVES
• WHITE
• BLACK

EP18
CHEFS JACKET BASIC D/BREADED WITH
MATCHING POPPERS, SHORT SLEEVES
• WHITE
• BLACK

EP1
CHEFS JACKET, BASIC D/BREADED
WITH WHITE POPPERS, LONG SLEEVES
• WHITE

Shading may occur within stock garment orders due to varying fabric batches

UNISEX & MENS HOUSEKEEPING



AT780 - UNISEX TUNIC SS
- from R210.00



AT966B - MENS SS V NECKLINE TUNIC
- from R210.00



AT801 - UNISEX TUNIC SS
- from R179.00



AT155 - UNISEX V-NECK TUNIC SS
- from R220.00



AT780E - UNISEX TUNIC SS WITH PIPING & SLEEVE TRIM
- from R234.00



AT780C - UNISEX TUNIC SS WITH SHWESHWE NECK & SLEEVE TRIM - from R262.00



AS857-235 - STOCK 'CLASSIC ORIGINALS' MENS FLAT FRONT CHINOS - STONE, KHAKE & OAK - from R289.00



EP11-BLACK - UNISEX ELASTICATED PANTS WITH PKTS & DRAWCORD - from R193.80



AXCM-TG1-460 - MENS SERVICE STAFF POLY TROUSERS - from R295.00



AXTO33 - BAR APRON - FRONT POCKET - from R64.00



AT159B - MENS MANDARIN COLLAR BUTTON SHIRT SS OPT PKTS AND TRIM - from R268.00



AT1004SS - MENS MANDARIN OPEN COLLAR SHIRT SS WITH COVERED BUTTONSTAND - from R274.00



AS283AB - STOCK UNISEX PF TOP, NO POCKETS BLACK - from R237.00

Manufactured to your colour and trim detail - wide choice of fabric types and weights. 5 - 6 week delivery • Shading may occur within stock garment orders due to varying fabric batches • See Stock Catalogue for immediate delivery • Rise per size • Excl VAT & Freight • T's & C's Apply



**AT1063SS - LADIES OPEN
MANDARIN COLLAR SHIRT SS
COVERED BUTTON STAND - from R272.00**



**AT1047 - LADIES
3/4 SLEEVE SHIRT, 1/4 BUTTONSTAND
- from R245.00**



**AT159 - LADIES OPEN NECK
SHIRT SS OPT PKTS AND TRIM
- from R263.00**

**AT780C - UNISEX TUNIC SS
WITH SHWESHE NECK &
SLEEVE TRIM - from R262.00**



**AT781 - UNISEX NECK
DETAIL SERVICE STAFF
SHIRT SS - from R316.00**



**AT966 - LADIES SS V NECKLINE
SERVICE TUNIC - from R202.00**



**AT1067 - LADIES ROUNDED
NECK SS SHAPED - from R242.00**



**AXTODOEK - CORE
HOUSEKEEPING DOEK
- from R49.00**



**AXTOSMS - LADIES SMOCK
STANDARD - 106CM FROM
NECK TO SEAM - from R199.00**

**AS283AB - STOCK -
UNISEX PF TOP, NO POCKETS
BLACK - from R237.00**



**AXCM-TW6-460
LADIES FORMAL MIDRISE
BOOTLEG PANTS - from R231.00**



**AT987 - LADIES
ELASTICATED
PANTS - from R140.00**



**AT070 - LADIES PLAIN
WRAP SKIRT, 1
PANEL - from R161.00**



**AXTO40 - LADIES HALF
ELASTICATED SKIRT WITH
BUTTON & ZIP - from R197.00**



**AT064B - LADIES
COMFORTABLE SKIRT -
- from R190.00**



**AXTOTAB - STANDARD TABARD
CONTRAST BINDING
- from R144.00**



Manufactured to your colour and trim detail - wide choice of fabric types and weights. 5 - 6 week delivery • Shading may occur within stock garment orders due to varying fabric batches • See Stock Catalogue for immediate delivery • Rise per size • Excl VAT & Freight • T's & C's Apply



**AT370LSV - MENS VENTED
HOSTING SHIRT LS**
- from R369.00



**AT370SBV - MENS VENTED
BUSH SHIRT**
LS - from R369.00 SS- from R353.00



**AS044-TEC - STOCK - RANGERS BUSH
SHIRT WITH ROLL UP TABS LS**
OLIVE OR STONE - from R378.00



**AS047-TEC - STOCK
RANGERS BUSH SHIRT SS**
OLIVE OR STONE - from R324.00



**AXKVLO-PLA-LS - POLYCOTTON
CLASSIC LOUNGE SHIRT**
LS - from R231.00 - SS - from R221.00



**AT1037 - POLYCOTTON
SLIM FIT LOUNGE SHIRT**
LS - from R328.00



AT283 | AS283
UNISEX POLAR FLEECE
WITH POCKETS - from R297.00 | R287.00



**AT1058 - MENS SOFT SHELL
JACKET WITH POCKETS**
- from R383.00



**AT397 - MENS SLEEVELESS RIGID
PUFFER JACKET** - from R433.00



**AT397B - MENS SLEEVELESS
PUFFER JACKET WITH DIAMOND
STITCHING** - from R394.00



**AS857-235 - STOCK
'CLASSIC ORIGINALS'
MENS FLAT FRONT CHINOS**
• Premier brand at
wholesale pricing
• Washed & brushed 100%
cotton twill
• Back jet pocket
• YKK Zipper
• SABS quality fabric
Size: Men 30 - 44
- from R289.00



**AT751CHI - MENS FRONT
PLEATED CHINOS** - from R327.00

Manufactured to your colour and trim detail - wide choice of fabric types and weights. 5 - 6 week delivery • Shading may occur within stock garment orders due to varying fabric batches • See Stock Catalogue for immediate delivery • Rise per size • Excl VAT & Freight • T's & C's Apply

AS150F-TECH - STOCK - LADIES
BUSH SHIRT SHAPED WITH FLAP PKTS
SS, STONE & OLIVE - from R264.00



AT990B - LADIES BUTTON DOWN DRESS
WITH SELF FABRIC WAIST BELT - from R451.00
AT990 - LADIES BUTTON DOWN DRESS
WITH SELF FABRIC WAIST BELT
& PKTS - from R524.00



AT150C - LADIES CLASSIC
SHAPED SHIRT 3/4 SLEEVE
from R248.00



AT965 - LADIES
CAP SLEEVE SHIRT WITH
POCKET - from R322.00



AT150B - LDS CLASSIC
SHAPED SS SHIRT
from R235.00

AT150 - LDS CLASSIC
SHAPED LS SHIRT WITH SLEEVE
TAB - from R254.00

AT1047 - LADIES
3/4 SLEEVE SHIRT
1/4 BUTTONSTAND - from R245.00

AT820 - LADIES 3/4 SLEEVE
SHIRT WITH ROLLUP
SLEEVE - from R358.00



AT1059 - LADIES SOFT SHELL
JACKET WITH POCKETS
- from R358.00

AT737B - LADIES L/LENGTH
QUILTED S/LESS JACKET
- from R421.00

AS1008 - STOCK - LADIES
PF TOP, RAGLAN SLEEVE, PKTS,
CHOC/MUSH & STONE - from R279.00

AT772A - LADIES
ALINE 70CM KNEE
SKIRT - from R154.00

AT066H - LADIES
MANAGEMENT SKIRT
FRONT ZIP, KNEE LENGTH
54CM - from R270.00

AXCM-KW1-460
LADIES CORE SKIRT,
64CM UNLINED
POLYESTER - from R184.00

AXCM-TWH-460 - LADIES
LOW RISE STRAIGHT LEG
PANTS - from R231.00

AT1026 - LADIES
LOW RISE FLAT
FRONT TROUSERS
- from R248.00

AT747 - LADIES CARGO
MIDRISE FLAT
FRONT PANTS
- from R311.00

Manufactured to your colour and trim detail - wide choice of fabric types and weights. 5 - 6 week delivery • Shading may occur within stock garment orders due to varying fabric batches • See Stock Catalogue for immediate delivery • Rise per size • Excl VAT & Freight • T's & C's Apply



AT1004LS - MENS MANDARIN
OPEN NECK COLLAR, COVERED
BUTTONSTAND SHIRT
LS - from R328.00 - SS - from R274.00

AT131B - MENS MANDARIN
COLLAR SHIRT SS WITH COVERED
BUTTONSTAND - R289.00



AT371B - MENS MANDARIN
COLLAR SHIRT
LS - from R314.00

AT371 - MENS MANDARIN
COLLAR SS SHIRT
- from R285.00



AT131 - MENS MANDARIN
COLLAR SHIRT LS OPT
PKT AND TRIM - from R328.00

AT159B - MENS MANDARIN
COLLAR SS SHIRT WITH OPT PKTS
& TRIM - from R268.00



AT870 - UNISEX
WAISTCOAT FULLY LINED
- from R304.00



AXKVLO-PLA-LS - MENS
CLASSIC LOUNGE SHIRT
LS - from R231.00
SS - from R221.00



AT1037 - MENS SLIM
FIT LOUNGE SHIRT
LS - from R328.00



AXCM-TG1-460 - MENS
SERVICE STAFF POLY
TROUSERS - from R295.00



AS857-235 - STOCK
'CLASSIC ORIGINALS' MENS
FLAT FRONT CHINOS, OLIVE,
STONE & OAK - from R289.00



EC41A - V-NECK
TUXEDO APRON
from R205.00



AT1048 - BISTRO
CONTRAST HALF APRON
from R104.00



EC9A-B - FULL APRON
WITH SQUARE PIPED
POCKET - from R145.00



AT1076 - HALF APRON
WITH PIPED POCKET
from R154.00

Manufactured to your colour and trim detail - wide choice of fabric types and weights. 5 - 6 week delivery • Shading may occur within stock garment orders due to varying fabric batches • See Stock Catalogue for immediate delivery • Rise per size • Excl VAT & Freight • T's & C's Apply



AT1063LS - LADIES OPEN
MANDARIN COLLAR SHIRT LS
COVERED B/S - from R308.00



AT1063SS - LADIES OPEN
MANDARIN COLLAR SHIRT SS
COVERED B/S - from R272.00



AT729B - LADIES BUTTONUP MANDARIN
COLLAR SHIRT SS - from R332.00



AT1073 - LADIES LS
SHIRT SHAPED MANDARIN
NECKLINE - from R242.00



AT159E - LADIES MANDARIN
COLLAR BUTTONUP SHIRT, LS COVERED
B/S OPT PKTS & TRIM - from R384.00



AT159D - LADIES MANDARIN COLLAR
BUTTONUP SHIRT SS
OPT PKTS AND TRIM - from R284.00



EC33A - BAR APRON WITH
POCKET AND OPTIONAL
STRIPES - from R114.00



AXCM-TW6-460
LADIES FORMAL MIDRISE
BOOTLEG PANTS - from R231.00



AT150 - LDS CLASSIC
SHAPED LS SHIRT WITH
SLV TAB - from R254.00



AT150B - LDS CLASSIC
SHAPED SS SHIRT
from R235.00



AT1047 - LADIES
3/4 SLEEVE SHIRT
1/4 B/S - from R245.00

Manufactured to your colour and trim detail - wide choice of fabric types and weights. 5 - 6 week delivery • Shading may occur within stock garment orders due to varying fabric batches • See Stock Catalogue for immediate delivery • Rise per size • Excl VAT & Freight • T's & C's Apply



AT964

LADIES SPA TOP - from R267.00

**AT788 - LADIES SPA TOP SS BACK
PLEAT & BUTTON DETAIL**
- from R271.00



AXDCNIT2M

LADIES SPA TOP - from R290.36

**AT966 - LADIES SS V NECKLINE
TUNIC** - from R202.00



**AT962 - LADIES ROUND NECK
REAR ZIPTUNIC**
- from R249.00



AXCM-TW5-460

LADIES MIDRISE CAPRI PANTS
POLYESTER - from R212.00



AXCM-TW6-460

- LADIES FORMAL MIDRISE
BOOTLEG PANTS POLYESTER
- from R231.00



**AT985 - SPA TABARD - LONGER
LENGTH WITH TWO FRONT
SIDE POCKETS AND SIDE TIES**
- from R185.00



**AT833B - SPA TABARD - LONGER
LENGTH, SIDE BUTTON CLOSURES**
FULL FRONT DOUBLE PKT - from R246.00



**AT014 - LADIES
DRAWSTRING CAPRI
PANTS** - from R227.00



**AT987B - LADIES 3/4
COMFORT PULL ON PANTS**
POLYESTER - from R132.00

Manufactured to your colour and trim detail - wide choice of fabric types and weights. 5 - 6 week delivery • Shading may occur within stock garment orders due to varying fabric batches • See Stock Catalogue for immediate delivery • Rise per size • Excl VAT & Freight • T's & C's Apply



AS047-235 - STOCK - HEAVY COTTON
'CLASSIC ORIGINALS'
BUSH SHIRT SS, KHAKI - from R296.00



AS044-235 - STOCK - HEAVY COTTON
'CLASSIC ORIGINALS' BUSH SHIRT WITH
WITH ROLL UP TABS LS, KHAKI - from R343.00



AS047-TECH - STOCK
RANGERS BUSH SHIRT SS
OLIVE OR STONE - from R324.00



AS044-TECH - STOCK - RANGERS BUSH
SHIRT WITH ROLL UP TABS LS
OLIVE OR STONE - from R378.00



AS880LS - MENS VENTED LONG SLEEVE
SHIRT - from R405.00

AT370LBV - MENS VENTED BUSH SHIRT
LS - from R369.00 SS - from R353.00



AT971SS - MENS SS TECH
SHIRT WITH BACK VENT
from R408.00



AS283 | AT283 - UNISEX
POLAR FLEECE WITH POCKETS
AS283 - from R287.00
AT283 - from R297.00



AS857CHI-235 - STOCK
MENS FLAT FRONT 'CLASSIC
ORIGINAL' CHINOS - STONE
KHAKI, OAK- from R289.00



AT857CHI
MENS FLAT FRONT
CHINOS
- from R324.00



AT857CAR - MENS
CARGO FLAT FRONT
TROUSERS - R371.00



AT856CAR - MENS
FLAT FRONT CARGO
CHINO SHORTS - from R318.00



AXCY6PANWORK
- 6 PANEL DURABLE
WORKWEAR CAP - from R42.00



AXCYBUSHHAT
- BUSH HAT WITH SIDE STUDS,
SOFT WIDE BRIM AND NECK CORD
- from R92.00



AT001 - POLAR
FLEECE BEANIE
from R75.00



PARKA JACKET WITH PF
LINING & FOUR POCKETS
AT395-210 - from R1005.00
AT395-235 - from R1036.00

Manufactured to your colour and trim detail - wide choice of fabric types and weights. 5 - 6 week delivery • Shading may occur within stock garment orders due to varying fabric batches • See Stock Catalogue for immediate delivery • Rise per size • Excl VAT & Freight • T's & C's Apply



AS150G - STOCK - LADIES BUSH
SHIRT SHAPED WITH FLAP
PKTS LS, STONE & OLIVE - from R291.00



AS150F - STOCK - LADIES BUSH
SHIRT SHAPED WITH FLAP
PKTS SS, STONE & OLIVE - from R264.00



AT307 - LADIES BUSH
SHIRT SHAPED SS - R323.00



AT735 - LADIES BUSH
SHIRT WITH A ROUNDED
COLLAR SS - R303.00



AT787 - LADIES BUSH SHIRT
WITH A ROUNDED COLLAR LS - from R368.00



AT1001 - LADIES
LONG SLEEVE SHIRT WITH
ROLL UP TAB - R361.00



AT747 - LADIES CARGO MIDRISE
FLAT FRONT TROUSERS - from R311.00



AT1026 - LADIES LOW RISE
FLAT FRONT TROUSERS - from R248.00



AT747E - LADIES CARGO MIDRISE
FLAT FRONT SHORTS - from R288.00



AT1059 - LADIES SOFT SHELL JACKET
WITH POCKETS - from R358.00



AS1008 - STOCK - LADIES POLAR FLEECE TOP
RAGLAN SLV - PKTS - CHOC/MUSH & STONE - from R279.00

Manufactured to your colour and trim detail - wide choice of fabric types and weights. 5 - 6 week delivery • Shading may occur within stock garment orders due to varying fabric batches • See Stock Catalogue for immediate delivery • Rise per size • Excl VAT & Freight • T's & C's Apply



AS1069G - STOCK - JACKET WATER
RESISTANT WARM QUILTED PADDED LINING &
FOLD-IN HOOD, BOTTLE GREEN - from R499.00



AS283 - STOCK - MENS PF TOP
WITH POCKETS - from R287.00



AXTOBLS - TRACKER BUSH
SHIRT GLADNECK LS - from R227.00



AXTOBSS - TRACKER BUSH
SHIRT GLADNECK SS - from R199.00



AXTOBLSE - TRACKER BUSH
SHIRT GLADNECK LS WITH
EPAULETTES - from R240.00



AXTOBSSE - TRACKER BUSH
SHIRT GLADNECK SS WITH
EPAULETTES - from R212.00

AXCY6PANWORK
- 6 PANEL DURABLE
WORKWEAR CAP - from R42.00



AT001
- POLAR FLEECE BEANIE - from R75.00



AXTOPANTCARG
- TRACKER CARGO PANTS
WITH FLY AND HALF
ELASTICATED - from R229.00

AXTOPAN
- TRACKER PANTS
WITH FLY AND HALF
ELASTICATED - from R209.00



AXTOSHO - TRACKER SHORTS
WITH FLY AND HALF ELASTICATED
- from R142.00



AXKVLAS175B
- MENS BASIC POLYCOTTON
GOLFER - from R105.00



AXTLC180 - COTTON 180G
TSHIRT - from R70.00



AXKVCS-BPC
2 PIECE CONTI SUIT
- from R203.00



AXTOBLSE - TRACKER BUSH
SHIRT GLADNECK LS WITH
EPAULETTES - from R240.00



AXTOBSSE - TRACKER BUSH
SHIRT GLADNECK SS WITH
EPAULETTES - from R212.00



AXTOBLS-DEN
DEMIN SHIRT LS
- from R259.00



AXTOBSS-DEN
DENIM SHIRT SS
- from R231.00



AT1070 - WINDBREAKER
BASIC UNLINED WITH FOLD-IN
HOOD - from R288.00



AXTOBOIL
MENS ONE PIECE
OVERALL - from R347.00



AXTOPAN
PANTS WITH
FLY AND HALF
ELASTICATED - from R209.00



AXTOCOMFULL
MENS FULL COMBAT
SECURITY TROUSER
- from R240.00



AXTOCOMMOCK
MENS MOCK COMBAT
SECURITY TROUSERS
- from R209.00

AXCY6PANWORK
6 PANEL DURABLE
WORKWEAR CAP - from R42.00



AS1069G - JACKET WR WARM
QUILTED PADDED LINING AND FOLD-IN
HOOD - BOTTLE GREEN - from R499.00
Fabric: Oxford Nylon WP
Size: S - 3XL



AS1069G - STOCK
JACKET WATER RESISTANT WARM
QUILTED PADDED LINING & FOLD-IN
HOOD, BOTTLE GREEN - from R499.00

AXMSFJK - WINTER SECURITY
JACKET - from R554.00



AT396-OXN - PARKA JACKET
WITH TWO POCKETS
PF LINED - from R765.00

AT395-235 - PARKA JACKET
WITH PF LINING & FOUR
POCKETS - from R1036.00



AT750 - MANAGERS JACKET
- from R588.00

AT817 - MENS JACKET
WITH PF LINING & SLANT
POCKETS - from R594.00



AT1070 - WINDBREAKER BASIC
UNLINED WITH A FOLD-IN
HOOD - from R288.00



AT397 - MENS RIGID SLEEVELESS
PUFFER JACKET - from R433.00



AT1058 - MENS SOFTSHELL JACKET
WITH PKTS - from R383.00



AT1058C - MENS SOFTSHELL JACKET
ZIP-OFF SLVS WITH PKTS - from R443.00



AT1058B - MENS SOFTSHELL
JACKET SLEEVELESS WITH PKTS - from R397.00



AT163BA - MENS DELUXE SLEEVELESS
JACKET PF LINED - from R536.00

Manufactured to your colour and trim detail - wide choice of fabric types and weights. 5 - 6 week delivery • Shading may occur within stock garment orders due to varying fabric batches • See Stock Catalogue for immediate delivery • Rise per size • Excl VAT & Freight • T's & C's Apply



AT010 - LADIES BUSH STYLE JACKET -
from R530.00



AT737B - LADIES L/LENGTH QUILTED S/LESS
JACKET POLYLINED - from R390.00



AT502 - LADIES PADDED JACKET
- from R533.00



AT737C - LADIES QUILTED S/LESS
JACKET WITH SIDE PANELS - from R420.00



AT813 - LADIES CLASSIC JACKET WITH POLAR
FLEECE LINING - from R572.00



AT1059 - LADIES SOFT SHELL JACKET
WITH PKTS - from R358.00



AT1059C - LADIES SOFT SHELL JACKET
WITH ZIP-OFF SLEEVES AND PKTS - from R414.00



AT1059B - LADIES SOFT SHELL JACKET
SLEEVELESS WITH PKTS - from R310.00



AT1074 - LADIES FITTED RIGID PUFFER JACKET
WITH PKTS - from R392.00



AS283 - STOCK - UNISEX POLAR FLEECE
TOP WITH POCKETS, CHOC/MUSH & OLIVE/STONE
- from R287.00



AT283 - UNISEX POLAR FLEECE
TOP WITH POCKETS - from R297.00



AT283D - MENS ZIP-OFF
SLV PF TOP WITH PKTS - from R403.00



AT283C - UNISEX S/LESS
PF TOP WITH PKTS - from R270.00



AT283B - UNISEX 1/4 ZIP PF TOP
WITH SIDE PANELS - from R271.00



AS1008 - STOCK - LDS PF TOP,
RAGLAN SLV WITH PKTS,
CHOC/MUSH & STONE - from R279.00



AT1008 - LDS PF TOP,
RAGLAN SLV WITH PKTS
- from R289.00



AT1008D - LDS PF
ZIP-OFF SLV WITH
PKTS - from R385.00



AT1008C - LDS PF
SLVLESS TOP WITH
PKTS - from R263.00



AT1003 - LADIES FITTED RAGLAN
SLEEVE POLAR FLEECE TOP
WITH PKTS - from R284.00



AT026C - LADIES FITTED
SLEEVELESS POLAR FLEECE
TOP - from R271.00



AT1008A - LADIES POLAR FLEECE
TOP, RAGLAN SLEEVE, NO PKTS
TOP - from R263.00

Manufactured to your colour and trim detail - wide choice of fabric types and weights. 5 - 6 week delivery • Shading may occur within stock garment orders due to varying fabric batches • See Stock Catalogue for immediate delivery • Rise per size • Excl VAT & Freight • T's & C's Apply



AT566F - PONCHO CLOSED NECK
UNLINED KNEE LENGTH - from R298.00
WP OXFORD NYLON



AT566E - PONCHO CLOSED NECK PF
LINED KNEE LENGTH - from R541.00
WP OXFORD NYLON & POLAR FLEECE



**immediate
DELIVERY**

AT566 - PONCHO PF LINED, KNEE LENGTH - from R456.00
AT566C - PONCHO PF LINED ANKLE LENGTH - from R607.00
AT566B - PONCHO PF LINED CALF LENGTH - from R537.00
AT566D - PONCHO UNLINED KNEE LENGTH - from R261.00
AT556G-NOR - PONCHO PF CALF 1,2M UNLINED - from R299.00



ASTMPONC - PONCHO - DURABLE
RUBBERISED AND WATERPROOF,
CHOCOLATE, 1,2M LONG - from R239.00
Fabric: Nylon - Size: OSFA
ASTMPONO - OLIVE - from R239.00



AXTMRAINCOAT - RAINCOAT IN A BAG
- 1 PIECE - from R190.00

KIDS



Supplied
in a bag

Pic of 6 year
old Luke

ASTMKIDPONO - KIDS PONCHO
RUBBERISED AND WATERPROOF,
OLIVE, 69L X 78W - from R190.00
Fabric: Nylon - Size: OSFA



AXTMRAINSUIT - RAINSUIT IN A BAG
- 2 PIECE - from R224.00



LUXURY BUSH BLANKET
AT456A - 145 X 145CM - from R294.00
AT456B - 145 X 200CM - from R375.00
PC TWILL & POLAR FLEECE



PF BLANKET RAW CUT EDGE
AT454F - 140 X 100 - from R79.00
AT454E - 140 X 150 - from R117.00
AT454G - 140 X 200 - from R150.00



PF BLANKET HEMMED EDGE
AT454D - 140 X 150 - from R171.00
AT454C - 140 X 180 - from R193.00
AT454H - 140 X 200 - from R206.00



AT453 - HOT WATERBOTTLE
cover - from R64.00

Manufactured to your colour and trim detail - wide choice of fabric types and weights. 5 - 6 week delivery • Shading may occur within stock garment orders due to varying fabric batches • See Stock Catalogue for immediate delivery • Rise per size • Excl VAT & Freight • T's & C's Apply